

MODERN LUXURY

Interiors

BOSTON

LOUNGE ACT

THE LATEST
LAUNCHES
TO CREATE
AN OUTDOOR
SANCTUARY



A COLORFUL
CONCORD
MANSE &
2 BROWNSTONE
BEAUTIES

FORCE OF NATURE

DESIGN'S TOP TALENTS TAKE IT OUTSIDE



©2020 Hunter Douglas



FEEL LIGHT TRANSFORMED™

Innovative window treatments with PowerView® Automation transform the natural light in your home to create the perfect mood, whenever the moment.

*Silhouette® Shades with
PowerView® Automation*

**WE DON'T BUILD THEM LIKE THEY USED TO
AND NOBODY DOES IT BETTER!**



FBNConstruction

17 WOLCOTT CT., BOSTON, MA 02136
617.333.6800 | FBNCONSTRUCTION.COM

ARCHITECT: HACIN & ASSOCIATES | DESIGNER: JAMA SAMEK INTERIORS | PHOTOGRAPHER: TRENT BELL

IF YOU DESIGN IT, WE CAN BUILD IT.

DESIGNER: WOLF IN SHEEP DESIGN | PHOTOGRAPHER: MICHAEL J LEE



FBNConstruction

17 WOLCOTT CT., BOSTON, MA 02136
617.333.6800 | FBNCONSTRUCTION.COM



EXPECT THE EXTRAORDINARY

Coldwell Banker Global LuxurySM represents buyers and sellers of some of the world's most spectacular properties with exceptional knowledge, professionalism and responsiveness. Discover how extraordinary a real estate experience can be. Contact us today.



GLOBAL
LUXURY™

[COLDWELLBANKERLUXURY.COM](https://www.coldwellbankerluxury.com)

B^D
C

AVAILABLE AT
BROWN JORDAN

B O S T O N D E S I G N
C E N T E R

*VISIT NEW SHOWROOMS
THIS SPRING*

BROWN JORDAN
CIRCA LIGHTING
DISCOVER TILE
DOWNSVIEW KITCHENS
GRAND RAPIDS
FURNITURE CO.
JEWETT FARMS
SCAVOLINI
STRUCTURE DESIGN
GALLERY
TILE SHOWCASE

SHOP OVER 60 SHOWROOMS AT NEW
ENGLAND'S PREMIER DESIGN DESTINATION

1 Design Center Place, Boston, MA

BOSTONDESIGN.COM | @BOSTONDESIGNCENTER

ELEVATE YOUR ENVIRONMENT





At Winston Flowers, we're dedicated to making your home—and the lives of those that matter to you most—more beautiful. Allow our world-class garden design team to create your at-home oasis with extraordinary container gardens featuring seasonal plants and specialty European vessels.

WINSTON  FLOWERS.

(617) 541-1108 | winstonflowers.com

OUTDOOR LIVING AT ITS BEST



**INDOOR & OUTDOOR PLANTS | ORGANIC SOLUTIONS
GIFTS & DECOR | LANDSCAPE DESIGN & PRODUCTION**

216 CONCORD ROAD (RTE.62W), BEDFORD, MA 01730 | 781.275.2525 | NEWENGLANDNURSERIES.COM



ONE GARDEN, YOUR GARDEN, ENDLESS POSSIBILITIES...



BOSTON
ARCHITECTURAL
COLLEGE

SINCE 1889

A close-up photograph of a smartphone resting on a desk. The screen displays architectural blueprints or a 3D model of a building. The background is a soft, out-of-focus yellow and white.

**WE ARE
WHERE
YOU ARE.**

THE BOSTON ARCHITECTURAL COLLEGE

Experience becoming an architect with the leader in online design education.

We're proud our online Master of Architecture degree is one of only a few accredited by the National Architectural Accrediting Board.

Find out if you can earn your Master of Architecture in just two years!

admissions@the-bac.edu
617.585.0123
the-bac.edu

design
edge

DESIGNED TO ENGAGE

Meet top industry executives at our invite-only event, and create meaningful connections

MODERN LUXURY

Interiors
BOSTON

Proud Media Sponsor of Design Edge Boston

what?

Design Edge is a highly curated, trade-only event featuring the best home furnishing brands in North America. The first event of its kind, Design Edge brings leading designer-centric manufacturers to premium markets throughout the country to connect with the region's designers and tastemakers.

why?

Design Edge closes the gap between manufacturer capability and designer awareness. Through executive level access, the best brands in the industry share their product collections, designer programs and versatility in meeting the scale and scope of project demands.

who?



when?

DAY 1 **Wednesday, September 23rd, 2020** 10am - 5pm/ 5pm - 7pm Reception
DAY 2 **Thursday, September 24rd, 2020** 10am - 5pm

where?

Boston Design Center, 1 Design Center Place
The Loft, 5th Floor, Boston, MA 02210

rare

elite



refined

distinctive

personal



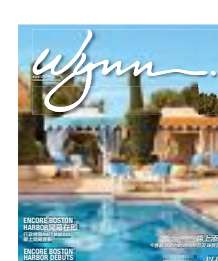
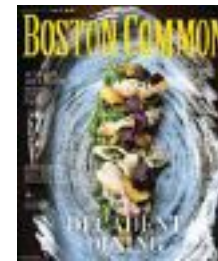
The culmination of luxury



GLOBAL
LUXURY®

COLDWELL BANKER RESIDENTIAL BROKERAGE | [COLDWELLBANKERLUXURY.COM](https://www.coldwellbankerluxury.com)

©2019 Coldwell Banker Residential Brokerage. All Rights Reserved. Coldwell Banker Residential Brokerage fully supports the principles of the Fair Housing Act and the Equal Opportunity Act. Owned by a subsidiary of NRT LLC. Coldwell Banker, the Coldwell Banker Logo, Coldwell Banker Global Luxury and the Coldwell Banker Global Luxury logo are registered service marks owned by Coldwell Banker Real Estate LLC. 564652NE_1/19



ASPEN | ATLANTA | BOSTON | CHICAGO | DALLAS | THE HAMPTONS

HAWAI'I | HOUSTON | LAS VEGAS | LOS ANGELES | MIAMI

NEW YORK | ORANGE COUNTY | PALM BEACH | PHILADELPHIA

SAN DIEGO | SAN FRANCISCO | SCOTTSDALE | SILICON VALLEY

TOURBILLON INTERNATIONAL | WASHINGTON, DC

MODERN **LUXURY** MEDIA

MODERN **LUXURY** MEDIA.COM

AT MODERN LUXURY, WE KNOW THAT COMMUNITY MORE
THAN EVER DEFINES WHO WE ARE. AND CITY BY CITY,
WE MAKE LIVING WELL AN ART FORM. WE BRING LUXURY
CLOSER TO HOME, BECAUSE **WE LIVE THERE TOO.**

THE MAGIC OF MOTHER NATURE



I have a feeling that many of you reading this will be jumping at the chance to enjoy Mother Nature in all of her warm, sunny and fresh-air glory... even more than usual this year. When there is a shift in the world, we often look inward to find a place of peace and as a result tend to spend more time with our loved ones at home. That's the upside of circumstances that can otherwise be challenging to our daily routines. Home truly is where the heart is... and for the time being, our "home offices" too!

This issue is devoted to outdoor living at its best. Exterior spaces have really become an extension of the home with furniture so stunning and functional that it can be used both inside and outdoors. I'm currently searching for a couple of pieces of all-weather art to add that perfect pop of color to my own cherished city yard. Designer Fletcher Steele set the bar very high for #landscapegoals when he designed the grounds of Naumkeag (the former Choate family estate) in the Berkshires with the property's iconic blue steps.

This issue spotlights a stunning Beacon Hill brownstone renovation by one of the city's very best designers, Trish McDonough, as well as a gorgeous Nantucket residence showcasing a boatload of airy and innovative exterior charm and decor designed by Workshop/APD. Toward the peak of the summer season, our current plans include heading to the enchanting famous island for Nantucket by Design July 30 to Aug. 1, where *Modern Luxury Interiors Boston* is proud to sponsor this highly anticipated design event. Speaking of top design talent, we are thrilled to launch Modern Luxury's new Interiors national platform later this year. You will have a chance to meet our Boston committee comprised of some elite interior designers who will serve as ambassadors for our incredible historic yet chic city.

As the weather warms up, we're dreaming of plein-air desires. Lilacs at the Arboretum at Harvard University's Arnold Arboretum always holds a special place in my heart as lilacs were my grandmother's favorite flower... I have very fond memories of being greeted each spring with fragrant lilac sweetness from the bushes dotting our yard. Thankfully, I will be able to enjoy my very own lilac tree in the comfort of my backyard this year where I anticipate many alfresco dinners will take place.

May you take time to enrich your body, mind and soul with the natural abundance outdoor living brings.

Cheers!

Shannon Pastuszak

Publisher

spastuszak@modernluxury.com

Instagram: [@mlinteriorsboston](#); [@spastuszak](#)



From top: My next project will include updating my own home office...after spending many days in mine, I'm reminded of how much our productivity and energy can be influenced by our environment; I'm looking forward to enjoying al fresco meals at home with the family this season (furniture courtesy of Casa Design Group); My summer goals include lounging on this stunning Nantucket patio designed by the pros at Workshop/APD



Mitchell Gold
+ Bob Williams

Introducing Our Partnership *with* Kravet

SPRING 2020

BOSTON / NATICK / BURLINGTON / MGBWHOME.COM



THE GREAT OUTDOORS

In the early 1980s, my father built a brick patio off the kitchen of our white Greek Revival. We'd just moved in and the 19th century house had plenty of other projects that needed attending to, but creating an outdoor haven for our family was paramount.

It took Dad a long weekend to build the patio, which was bordered by a fragrant lilac tree and several rhododendrons and overlooked the lush lawn that stretched out over an acre. Dad had sand trucked in and laid the antique brick pavers himself. I watched him on those summer days, trying to help as much as a first grader could, and was impressed by the offset pattern that emerged as the project neared completion, the interlocking dark red, burnt orange and worn gray bricks exuding a rustic elegance.

Outdoor living was important to Dad. He wanted us to have a spot outside to gather, to grill and dine, to entertain and stretch out on lazy Sunday mornings. Looking back, we spent more time on the patio during the warm months of the year than anywhere inside the house. Some 35 years later, the patio remains intact. It's been the site of many parties and family gatherings, afternoon naps and casual dinners. It holds as many memories for me as any single room of my parents' house.

After being cooped up indoors for so long, all of us are ready to relish these warmer days. As such, much of this issue is devoted to outdoor spaces. We've selected some truly exceptional projects for the feature "Green With Envy" and showcase the latest and greatest goods for garden and pool areas. Locally, if your yard is in need of new decor, head to Casa Design Living's pop-up behind the Four Seasons Hotel Boston, where some of its mod European outdoor furniture is in stock. For more insight on the pop-up and Casa Design's 10-year anniversary, check out the front-of-book story "Furniture Showcase."

Along with several swoonworthy homes—including a Back Bay brownstone, a gracious Concord manse and a Newton residence that takes cues from a stellar contemporary art collection—this issue introduces members of the city's top crop of interior designers, whom we've selected to be part of the *Modern Luxury Interiors Boston* Committee. This group, along with designers in all of Modern Luxury's other markets, will serve as brand ambassadors as we get ready to launch our new website. Stay tuned for details!

Be well. Bask in the sun wherever you can find it and relish these days of outdoor living.

Jaci Conry
Editor-in-Chief

jconry@modernluxury.com

Instagram: [@mlinteriorsboston](https://www.instagram.com/mlinteriorsboston/); [@jaciinteriorsboston](https://www.instagram.com/jaciinteriorsboston/)



JACI CONRY PORTRAIT BY CHERYL RICHARDS; MAKEUP BY RITA SORRENTINO; HAIR BY SAL MALAFRONTI; RED CHAIR PHOTO BY MICHAEL J. LEE; PATIO PHOTO COURTESY OF SHUTTERSTOCK



From top: I was totally wowed by the red Kenneth Cobonpue Dagnet lounge chair at Casa Design's new pop-up; when the lilac tree blooms next to my parents' patio, it's a sure sign of spring.



The Container Store®

CUSTOM CLOSETS

Schedule a free design consultation today at [containerstore.com](https://www.containerstore.com)

©2020 The Container Store Inc. 47255

DEPARTMENTS

In Every Issue
Publisher's Letter 20
Editor's Letter 22
Calendar 34



Living in Boston

- 37 **Spotlight** When powerhouse brands Room & Board and Cambria join forces, the design world tunes in.
- 38 **What I Want Now** Jeremiah Brent bows his collection with Pottery Barn Kids.
- 40 **Details** Fromental and Lalique team up for a fanciful wallcovering.
- 42 **Illuminated** The latest outdoor lighting acts like jewelry for the home.
- 44 **Launch** Two brands work together to give designers more choices and faster turnarounds.
- 46 **Showroom** Casa Design opens a sprawling temporary shop in a prime Back Bay location.
- 48 **Design** A Beacon Hill residence is transformed into a functional family home with reverence to the structure's origins and nods to residents' travels abroad.
- 50 **Legacy** McKinnon and Harris is helmed by a brother-sister duo whose creativity goes back generations.

- 52 **Collections** With her new lines with Vervain and Currey & Company, design star Sasha Bikoff infuses interiors with extra sparkle.
- 54 **Books** These vibrant volumes emphasize the art of outdoor living.
- 56 **Renovation** A cohesive neutral palette centered on white oak gives this home a casual California-inspired vibe.
- 58 **Trends** Behold: the neater way to store your bar accouterments.
- 60 **Trends** This underrated nubby texture finally gets the design credit it's due.
- 62 **Trends** After a century of brilliant style, art deco still looks modern and fresh.
- 64 **Decor** New rug offerings combine artistry and exquisite materials.
- 66 **Collab** Interior designer Michelle Nussbaumer's collection with Clarence House is a global sensation.
- 68 **Outdoor Living** Cassina brings its modern aesthetic to nature with its first complete outdoor collection.



Make Your House a Home



ONE KINGS LANE

NEW YORK

NEW YORK

SOUTHAMPTON

BOSTON

FURNISHINGS • VINTAGE • DECOR • ART • GIFTS • INTERIOR DESIGN

ONEKINGSLANE.COM

Email boston@onekingslane.com to learn more about how we can help you virtually.



- 70 Buzz** The iconic Cathedral of the Holy Cross is restored to reflect its original grandeur, with a few modern touches.
- 72 Design News** Beth Webb is the latest designer to collaborate with Arteriors.
- 74 Market Report** Create alfresco rooms with luxe lounges and opulent textures.
- 76 Profile** Estee Stanley redefines the rules of the game for the design trade.
- 78 Artisan** For three decades, furniture maker and sculptor Jeff Soderbergh has made it his mission to breathe new life into old objects.
- 80 Closet Confidential** Amp up spring cleaning with swanky storage solutions from design diva Martha Stewart.

Explore

- 111 Spotlight** The Residences at Mandarin Oriental, Honolulu up the luxury game with kitchens and baths custom made by Molteni&C.

- 112 Jet Set** When tasked with where to spend two blissful weeks of R&R, the answer is unequivocal: Uruguay.
- 114 Getaway** Air France and the Ritz Paris deliver an ultimate getaway to the City of Light.
- 116 Second Homes** Meet the Los Cabos, Mexico, residential community that can turn vacation mode into everyday mode.
- 118 House Party Boston**
- 128 Marketplace**
- 144 Last Look**



ON THE COVER

PHOTOGRAPHY: Read McKendree
DESIGNER: Workshop/APD

STARK

ANTIQUE REIMAGINED
DISTRESSED TRADITIONAL

ULYANA NAVY RUG
STARKCARPET.COM

THE BOSTON DESIGN CENTER
1 DESIGN CENTER PLACE | FIRST FLOOR PROMENADE
BOSTON, MA 02210 | 617.357.5525

82 Place of Permanence
A suburban residence is transformed to become the forever home of its inhabitants.

88 True Colors Highlighting shades of green, blue and yellow, Robin Gannon instills a family home with an upbeat, unified atmosphere.

94 White Space Designer Jackie Whalen's home emphasizes simplicity and elegance while highlighting the structure's rich original architectural detailing.

98 Green With Envy Airy, innovative and utterly one of a kind, these inspirational alfresco spaces make outdoor living appealing morning, noon and night.

104 The Committee The top tastemakers who keep Boston looking so good as part of our *Modern Luxury Interiors Boston* Committee

RANKED "BEST" IN BOSTON IN RESIDENT SATISFACTION 5 YEARS IN A ROW

SMART LIVING *at its* BEST



We are proud to be ranked top out of 100,000 nationwide apartments in the ORA Power Rankings

Beautifully designed 1 and 2 bedroom apartments ■ LEED Gold Certified; eco conscious design
Over 28,000 SF of free amenity space (Outdoor pool with sundeck, fireplace, TV and grill, 3,300
SF fitness center and yoga studio and group classes, 2 private meeting rooms, lounge area
and billiards room) ■ Smoke-free environment ■ Pet friendly - indoor pet relief suite
Jaho Coffee & Tea, Boston's own artisan coffee bar & roaster

THE KENSINGTON

SMART APARTMENT LIVING

KENSINGTONBOSTON.COM | 888.875.1192 | 665 WASHINGTON STREET BOSTON MA 02111



MODERN LUXURY REGIONAL
SALES OFFICES

ASPEN
503 E. Hyman Ave., Ste. D
Aspen, CO 81611
970.710.7178
Contact: Alan Klein

ATLANTA
3414 Peachtree Road, Ste. 480
Atlanta, GA 30326
404.443.1180
Contact: D'Anne Cagle-Heckert

BOSTON
745 Boylston St., Ste. 401
Boston, MA 02116
617.266.3390
Contact: Carin Keane

CHICAGO
33 W. Monroe St., Ste. 2100
Chicago, IL 60603
312.274.2500
Contact: Tom Conradi

DALLAS
3333 Lee Parkway, Ste. 350
Dallas, TX 75219
214.647.5671
Contact: Blake Stephenson

THE HAMPTONS
67 Hampton Road, Ste. 5
Southampton, NY 11968
631.283.7125
Contact: Lynn A. Scotti

HAWAII
1003 Bishop St., Ste. 1220
Honolulu, HI 96813
808.924.6622
Contact: Alan Klein

HOUSTON
4306 Yoakum Blvd., Ste. 100
Houston, TX 77006
713.622.1116
Contact: Sarah Leftwich

LAS VEGAS
610 S. 7th St.
Las Vegas, NV 89101
702.990.2500
Contact: Kim Armenta

LOS ANGELES
10100 Santa Monica Blvd., Ste. 410
Los Angeles, CA 90067
424.253.3200
Contact: Christopher Gialanella

MIAMI
404 Washington Ave., Ste. 650
Miami Beach, FL 33139
305.531.9970
Contact Miami: Liana Guilarte
Contact Ocean Drive: Courtland Lantaff

NEW YORK
565 Fifth Ave., 6th floor
New York, NY 10017
212.582.4440
Contact: Lynn A. Scotti

ORANGE COUNTY
3333 Michelson Drive, Ste. 300
Irvine, CA 92612
714.557.2700
Contact: Christopher Gialanella

PALM BEACH
203 Royal Poinciana Way, Ste. A
Palm Beach, FL 33480
561.440.6868
Contact: Elizabeth Humphreys

PHILADELPHIA
141 League St.
Philadelphia, PA 19147
215.468.6670
Contact: John M. Colabelli

SAN DIEGO
875 Prospect St., Ste. 300
La Jolla, CA 92037
858.366.9721
Contact: Ken St. Pierre

SAN FRANCISCO &
SILICON VALLEY
55 Francisco St., Ste. 100
San Francisco, CA 94133
415.398.2800
Contact: Walter Kupiec

SCOTTSDALE
7525 E. 2nd St., Ste. 100
Scottsdale, AZ 85251
480.522.2200
Contact: Michael Zivnyak

WASHINGTON, DC
2000 M St. NW, Ste. 510
Washington, DC 20036
202.408.5665
Contact: Jessica Powers

MODERN LUXURY

Interiors

BOSTON

JACI CONRY
Editor-in-Chief

EDITORIAL

Managing Editor EMMA JACKSON

Editorial Operations Director ELA SATHERN

Group Executive Editor/National Travel Editor J.P. ANDERSON

Group Executive Editors MIKE ESPINDLE, LUIS R. RIGUAL

Vice President of Social Content STEPHANIE APESSOS

Senior Managing Editor ELIZABETH HARPER

Senior Copy Editors ANNA DUNN, JULIA STEINER

Copy Editor ERIN KAIN

Contributing Editors CHRISTINE BENEDETTI, LAURA HINE, LAUREN FINNEY HARDEN,

LAURA ECKSTEIN JONES, ANETTA NOWOSIELSKA, MIMI FAUCETT TRAHAN

Editorial Interns SAM LEVY, MODESTY SANCHEZ

FASHION

VP Creative/Fashion Director JAMES AGUIAR

Fashion Director of Custom Publishing & Branded Content FAYE POWER VANDE VREDE

Photography Producer CONOR MC INTYRE

Fashion Market Editor CONNOR CHILDERS

Fashion Assistant JULIE D'ALESSANDRO

CREATIVE

Design Director CHELSEA VACCARO

Director of Photography GREG GILLIS

Associate Design Director ELIZABETH CARLISLE

Senior Designer CAROLYN DUFF

Managing Photo Editor STEPHANIE BROAD RUSSELL

Senior Photo Editors KAMIL GALIMSKI, LISA GOMBERT

Photo Editor VICTORIA SAINT MARTIN

Contributing Photographers JARED KUZIA, MICHAEL J. LEE, ERIC LEVIN,

READ MCKENDREE, PETER VANDERWALKER

MIKE PALLAD
President,
National Portfolio

PHEBE WAHL
Senior Vice President
of Editorial

TIFFANY KUNKLE
Chief Financial Officer

RAQUEL CADOURCY
Chief Marketing Officer

ALAN KLEIN
President, Group Publisher
Custom Content

ASHLEY HERD
Senior Vice President,
People & Legal

MODERN LUXURY

LEW DICKEY
Chairman

JOHN DICKEY
Vice Chairman

JOHN AMATO
Chairman of
Executive Committee

MICHAEL DICKEY
Chief Executive Officer



OUR OFFICES ARE LOCATED AT

745 Boylston St., Ste. 401, Boston, MA 02116 | Phone: 617.266.3390

For a list of upcoming events that you don't want to miss, please visit: modernluxuryinteriors.com

2020 ©DM LUXURY, LLC. ALL RIGHTS RESERVED MODERN LUXURY® IS A REGISTERED TRADEMARK OF DM LUXURY, LLC

Douglas Elliman **Makes More Moves**

\$28.7 Billion

In closed national sales

2nd Largest

Independent brokerage in the nation by sales volume

44,726

National sales and rental transactions

#1 Condo Sale

In Boston for 2019*

 **DouglasElliman**

[elliman.com](https://www.elliman.com)

MODERN LUXURY REGIONAL
SALES OFFICES

ASPEN
503 E. Hyman Ave., Ste. D
Aspen, CO 81611
970.710.7178
Contact: Alan Klein

ATLANTA
3414 Peachtree Road, Ste. 480
Atlanta, GA 30326
404.443.1180
Contact: D'anne Cagle-Heckert

BOSTON
745 Boylston St., Ste. 401
Boston, MA 02116
617.266.3390
Contact: Carin Keane

CHICAGO
33 W. Monroe St., Ste. 2100
Chicago, IL 60603
312.274.2500
Contact: Tom Conradi

DALLAS
3333 Lee Parkway, Ste. 350
Dallas, TX 75219
214.647.5671
Contact: Blake Stephenson

THE HAMPTONS
67 Hampton Road, Ste. 5
Southampton, NY 11968
631.283.7125
Contact: Lynn A. Scotti

HAWAII
1003 Bishop St., Ste. 1220
Honolulu, HI 96813
808.924.6622
Contact: Alan Klein

HOUSTON
4306 Yoakum Blvd., Ste. 100
Houston, TX 77006
713.622.1116
Contact: Sarah Leftwich

LAS VEGAS
610 S. 7th St.
Las Vegas, NV 89101
702.990.2500
Contact: Kim Armenta

LOS ANGELES
10100 Santa Monica Blvd., Ste. 410
Los Angeles, CA 90067
424.253.3200
Contact: Christopher Gialanella

MIAMI
404 Washington Ave., Ste. 650
Miami Beach, FL 33139
305.531.9970
Contact Miami: Liana Guilarte
Contact Ocean Drive: Courland Lantaff

NEW YORK
565 Fifth Ave., 6th floor
New York, NY 10017
212.582.4440
Contact: Lynn A. Scotti

ORANGE COUNTY
3333 Michelson Drive, Ste. 300
Irvine, CA 92612
714.557.2700
Contact: Christopher Gialanella

PALM BEACH
203 Royal Poinciana Way, Ste. A
Palm Beach, FL 33480
561.440.6868
Contact: Elizabeth Humphreys

PHILADELPHIA
141 League St.
Philadelphia, PA 19147
215.468.6670
Contact: John M. Colabelli

SAN DIEGO
875 Prospect St., Ste. 300
La Jolla, CA 92037
858.366.9721
Contact: Ken St. Pierre

SAN FRANCISCO &
SILICON VALLEY
55 Francisco St., Ste. 100
San Francisco, CA 94133
415.398.2800
Contact: Walter Kupiec

SCOTTSDALE
7525 E. 2nd St., Ste. 100
Scottsdale, AZ 85251
480.522.2200
Contact: Michael Zivnyak

WASHINGTON, DC
2000 M St. NW, Ste. 510
Washington, DC 20036
202.408.5665
Contact: Jessica Powers

MODERN LUXURY

Interiors

BOSTON

CARIN KEANE
Group Publisher

SHANNON PASTUSZAK
Publisher

ADVERTISING SALES

Senior Account Executive JEAN ROBERTS Senior Account Executive CARLY RUBIN Account Executive ALLISSA IRVING

MARKETING

Director of Marketing and Events FRANCESCA PURCELL
Marketing and Events Coordinator ALYSSA SIEVERS
Sales and Office Assistant VALINA CLEMENTE

NATIONAL SALES & MARKETING

Vice President, National Portfolio CHRISTIAN POPPERT Vice President, Brand Marketing KIM TAN
Sr. Director of Business Development and Revenue Strategy KRISTAL DAVIS Executive Director, Bridal & Interiors LORI SILVER
Account Director MONIQUE DE BOER Advertising Director, Southeast JANA SCHONHOFF WOOD
National Director, Southwest HEATHER NOLAND National Advertising Directors, West PETER FISHER, ELIZABETH MOORE
National Sales Directors SUSAN ABRAMS, KATHLEEN FLEMING, SHANNON PASTUSZAK
National Sales Director, West Coast VALERIE ROBLES Junior Director of National Sales KELLY RYAN
Senior Brand Development Director KATE PELL Director, Digital Marketing and Strategy JIMMY KONTOMANOLIS
Director, National Events ASHLEY STEVENS National Marketing Manager KAYLY SCOTT
National Sales and Marketing Support Manager LAUREN MONNERAT National Sales and Marketing Assistant PARKER EWING

PRODUCTION & CREATIVE SERVICES

Production Director ALEXANDRA KNERLY Production Manager AMBER BERDIN
Senior Account Coordinator, National AJAH POLK, Senior Account Coordinator, Regional ANNE ROBERTSON
Systems Coordinators NANNETTE BABBINGTON, CRISTINA CLAVELL, BROOKE COYNER
Account Coordinators MCKENZIE BIRMINGHAM, AMANDA HOPKINS,
GRETA SMITHMIER, JESSICA TORRES, JESSICA ZAYIA
Special Projects Coordinators JACQUELINE NOVAK, SORAYAH TALAREK Managing Art Director SHER DIONISIO
Senior Designers KATIE LOWERY, CAITLYN SMITH
Designers LAUREN BROWN, KAYLEE HAYEN, VICTORIA SUDING, DILLON YOTHERS
Digital Marketing Designer MAGEN FARRAR
Senior Project Coordinator NATALIE RAGUSIN Marketing Coordinator NICOLE TIMBLIN
Associate Production Manager KARI COMPEAN

DIGITAL MEDIA

Senior Vice President, Digital MELISSA TURQMAN
Vice President, Digital Operations MICHAEL CAPACE

CUSTOM CONTENT STUDIO

President and Group Publisher ALAN KLEIN

PRINTING & PREPRESS

Vice President of Operations SEAN BERTRAM Senior Imaging Specialist LESLIE BAYLY

CIRCULATION & DISTRIBUTION

Vice President, Audience Development MARIA BLONDEAUX National Distribution Manager HECTOR GALVEZ
Distribution Operations Manager KIMBERLY CHANG Distribution Fulfillment Manager DORIS HOLLIFIELD
Market Research Manager CHAD HARWOOD Distribution Operations Coordinator FAE DUKES COMPTON

TECHNOLOGY

Director of MIS RICHARD WILSON Director of IT SCOTT BROOKMAN
Senior Developer CHRISTOPHER MACIEJCZYK IT Manager TONY NGHIEM

FINANCE

Controller WAYNE STRAYHORN Senior Regional Finance Director TAKISHA FRANKLIN
Accounting Manager JAZMON DUKES Regional Finance Directors LISA MODICA, TIERNEY WILCHER
AP Manager RENAE BLAIR Staff Accountants ARTHUR HONIG, KIMBERLEY SCOTT
Payroll Accountant FRANK WILLIAMS Billing Coordinators DESTINY DUNBAR, CHRISTOPHER WINT
Collection Managers CHRISTOPHER BEST, TIHEARA DANIEL, JAMY ENGLISH, HALEIGH O'CONNELL, FILSAN OLHAYE

HUMAN RESOURCES

Human Resource Director CRISTIN PICCIANO

ADMINISTRATION

Executive Assistant to CEO & President CARA PICCIANO RAGIN

MIKE PALLAD President, National Portfolio	PHEBE WAHL Senior Vice President of Editorial	TIFFANY KUNKLE Chief Financial Officer	RAQUEL CADOURCY Chief Marketing Officer	ALAN KLEIN President, Group Publisher Custom Content	ASHLEY HERD Senior Vice President, People & Legal
---	---	---	--	--	---

MODERN LUXURY

LEW DICKEY
Chairman

JOHN DICKEY
Vice Chairman

JOHN AMATO
Chairman of
Executive Committee

MICHAEL DICKEY
Chief Executive Officer



OUR OFFICES ARE LOCATED AT

745 Boylston St., Ste. 401, Boston, MA 02116 | Phone: 617.266.3390

For a list of upcoming events that you don't want to miss, please visit: modernluxuryinteriors.com

2020 ©DM LUXURY, LLC. ALL RIGHTS RESERVED MODERN LUXURY® IS A REGISTERED TRADEMARK OF DM LUXURY, LLC



SAVE THE DATE

By Modesty Sanchez



7/30-8/1

Nantucket by Design

For design lovers and industry professionals, this is one of the most anticipated events of the season. The idyllic island of Nantucket presents an ideal backdrop for the three-day celebration of design. The event includes lively lectures, panel discussions, an antique show, cocktail parties and intimate dinners at private homes. Hosted by the Nantucket Historical Association, the festivities kick off with an elegant luncheon and culminate with a gala Saturday evening at the Nantucket Whaling Museum. nha.org

PHOTOGRAPHY BY MICHAEL J. LEE



DAHER INTERIOR DESIGN

FULL SERVICE INTERIOR DESIGN AND INTERIOR ARCHITECTURE FIRM

224 CLARENDON STREET | BOSTON, MA 617.236.0355 | DAHERINTERIORDESIGN.COM



BRADFIELD
INTERIOR DESIGN

BRADFIELDID.COM | 415.305.2647 | BOSTON



LIVING IN BOSTON

"Pren perfectly pairs the signature beauty of both brands, highlighting the sculptural quality of solid wood in combination with sophisticated quartz," says Room & Board's Gene Wilson. The modern, thin, rounded countertop edges; soft curves; and beveled edges present in the collection can be seen in the Pren bar cabinet with Cambria quartz top, \$3,699 to \$4,399, shown here.

BOARDING HOUSE

When two powerhouse Minnesota-based brands join forces, the design world tunes in. Modernist favorites **Room & Board** and **Cambria** release Pren, a first-of-its-kind collaboration, which debuted earlier this year. "For a true collaboration to work," says Gene Wilson, Room & Board director of vendor management and merchandising, "everyone needs to bring their strengths to the table, and the Pren collection is a reflection of what both brands do best: marrying great designs and materials together." The offerings, which began with the idea of a modern, clean-lined dining table, organically grew to include a bar cabinet, coffee tables and storage pieces, among others (\$2,999 to \$5,799). "Pren is one of our favorite products and projects this year," adds Wilson. "We learned from each other; pushed the boundaries of design, craft and luxury; and the result is a collection that takes our products to the next level." The collection not only provides a new, exciting product line for Room & Board loyalists, but also an uncharted medium for Cambria to display its quartz surfaces. "Sharing the same backyard and same ethos certainly helped," says Cambria Vice President of Corporate Partnerships MacKenzie Weldon of the collaboration's origins. "It has always made sense for us to develop a partnership with Room & Board. ... The response out of the gate has been tremendous—we're looking forward to the next iteration." For that, fans will have to exercise patience: The next range of products is still under wraps.

Room & Board, 375 Newbury St., roomandboard.com; cambriausa.com —Elizabeth Harper



“These one-of-a-kind handpainted ceramics by Rebekah Miles are so special to me. They’re unique with the perfect amount of whimsy.”

Made-to-order dinner and salad plates, set of 12 for \$5,700, rebekahmiles.com



“Pillows are something you can switch up without breaking the bank. Play around with different color combinations, textures and shapes to change the feel of your room.”

Rustique stripe linen pillow, \$285, gardeshop.com



“We have Santa Maria Novella potpourri all over our house. I put it in every room because I’m so obsessed with it! If fall in Italy was a scent, it would probably be this. To me, it smells like home.”

Potpourri, \$25, buy smnovella.com



“One thing I love about some of the pieces in this collection is that they don’t have to be strictly for the nursery.

This neutral rug can integrate seamlessly into any space and subtly introduce a fun pattern.”

Jeremiah Brent x Pottery Barn Kids rug, 8-foot-by-10-foot for \$749, Pottery Barn Kids, Burlington Mall, potterybarnkids.com

SMALL TALK

“My family is always and has always been my biggest inspiration,” says designer Jeremiah Brent (jeremiahbrent.com). This March, the dad of two—and husband to Nate Berkus—bows his latest collaboration with Pottery Barn Kids, a thoughtfully designed nursery collection he describes as “calm, textured, layered, soft and evolved.”

Consisting of everything from decor to furniture, the look and feel directly connect to Brent’s personal style and at-home rituals. “This collection tells the story of our life as a family,” he explains. “The crystal lamp was inspired by my own home and the ceremony of candlelight by crystals every morning.” Here, the fashion-forward designer reveals his must-haves.

—Laura Eckstein Jones



“Everyone knows my undying love for woven baskets. I put everything in them, from extra blankets to toys or firewood. These wovens can hide anything and still make your space look sophisticated and lived-in while adding natural texture.”

Merapi storage baskets, from \$155 each, the-citizenry.com

PORTRAIT COURTESY OF POTTERY BARN KIDS; REBEKAH MILES PHOTO BY LEEA CYD; OTHER PRODUCT PHOTOS COURTESY OF BRANDS



CAMBRIDGE, MA | CAPE COD & ISLANDS
617 621-1455

www.LDa-Architects.com

LDa
ARCHITECTURE & INTERIORS

FLORA, FAUNA, FABULOUS

Fromental and Lalique team up for a fanciful wallcovering.

By Lauren Finney Harden

A new wallcovering collection from Fromental comes to life with 3D wall sculptures by Lalique.



What happens when a British wallcovering atelier meets a French heritage crystal house? A collaboration made in European heaven. Fromental and Lalique join together to offer truly special handprinted and handembroidered silk wallcoverings that are made even more exclusive when adorned with Lalique crystal wall sculptures. Dubbed Hironnelles, the chinoiserie pattern features Lalique's signature dahlias and swallows (*hirondelle* is French for swallow). The hironnelles, in fact, are Lalique's 130th anniversary symbol, and the dahlias are reminiscent of the belle époque. The stunning collaboration is custom-outfitted to the room lucky enough to receive it, and the sculptures are handstamped, making for a chic and unforgettable accent. There's no need for indecisive types to worry: The sculptures are magnet-mounted, so it's easy to reposition them according to your whim. *Wallpaper \$1,708-\$1,750 per square yard; Lalique pieces \$335-\$875, by special order at lalique.com; fromental.co.uk*



photography by Warren Jagger

S+H

construction

QUALITY • INTEGRITY • VALUE

617-876-8286 www.shconstruction.com

BEST OF BOSTON HOME 2017, 2016, 2015, 2012, 2011, 2010, 2008 / BEST OF BOSTON 2017, 2007

1. Champeaux double sconce in lacquered burnished brass, \$495, RH, The Gallery at the Historic Museum of Natural History, rh.com 2. URI outdoor rechargeable lights in blue/red, \$50, store.moma.org 3. Freeport large outdoor wall lantern, \$489, by C&M by Chapman & Myers at Circa Lighting, circalighting.com 4. IC Lights outdoor floor lamp in Black/Black Lava base, from \$1,495, by Michael Anastassiades for FLOS at Neena's Lighting, neenaslighting.com; flos.com 5. Chester large wall bracket, \$672, by Kalco at Granite City Electric, Quincy, graniticelectric.com; kalco.com 6. Calyx outdoor sconce in textured black powdercoat, from \$630, by Cerno at Exposure, exposure2lighting.com; cernogroup.com



1



2



3



4

6



5



FRESH GLOW

Chic, contemporary and unexpectedly cool, the latest outdoor lighting acts like jewelry for the home, adorning facades with personality and style.

By Laura Eckstein Jones



THE PERFECT FIT.

ELEGANT. ROMANTIC. TIMELESS.
WILD AGATE BLACK.



Cumar is New England's preeminent source and fabricator of the finest marble, granite, limestone, and exotic stones. | 617.389.7818 | cumar.com



prints that would work for the launch and for a period of time to come,” says O’Connor.

On the logistics side, Kravet inventories the fabrics and gets orders to the North Carolina-based factories that make Mitchell Gold + Bob Williams upholstered furnishings within 48 hours. “For designers, the coolest thing is that they’ll get it much faster,” says Mitchell Gold, co-founder and chairman. “We’re taking out a step, but also making it much easier to show the Kravet fabric and actual product to their client.” O’Connor adds: “Our trade program is one of the friendliest in the business, and we pride ourselves on helping our designers at the highest level.” 142 Berkeley St., mgbwhome.com; kravet.com

NEED FOR SPEED

Two brands work together to give designers more choices and faster turnarounds.

By Laura Hine

For designers frustrated by the turnaround times that come with customer’s own material orders, the obvious answer is to find stocked fabrics that fit the bill and cut delivery time. Mitchell Gold + Bob Williams and Kravet’s expanded partnership gives pros both of those essentials: speed and choice. A new selection of 340-plus custom upholstery offerings was quietly introduced late last year, and now the program, which promises turnaround times of 10 to 12 weeks, is up and running.

“We’ve worked with Kravet for a long time, so we knew our interior designers were familiar with the brand and would be excited to put Kravet and Mitchell Gold + Bob Williams together,” says company President and CEO Allison O’Connor. “The initial response has been very positive.” The retailer’s vice president of fashion direction, Leslie Stoll, worked with Kravet to narrow down the company’s vast selection to seven books of fabrics—inspired by hues and textures found in nature—that work aesthetically and operationally. “We looked at textures, patterns and



From top: Kravet’s Natural fabric collection; all of Mitchell Gold + Bob Williams’ upholstered furnishings can be custom made with Kravet fabrics; Sky is one of seven new collections offered.



SOMETIMES PEOPLE LIE ABOUT THEIR AGE.

We're rather proud of it.



For 90 years The Portland Group has been New England's top choice for plumbing and heating. Our showrooms, Splash and Spritzo, offer the most beautiful bathroom products on the market. It's true what they say, we're not getting older, we're getting better.

The Portland Group. 90 years of beautiful.

617-332-6662 / 244 Needham Street, Newton, MA / SplashSpritzo.com

Affiliated Spritzo Showrooms:
Worcester, MA / Providence, RI / Saco, ME / Clinton, CT / Middletown, CT / Vernon, CT



SPLASH



FURNITURE SHOWCASE

Casa Design opens a sprawling temporary shop in a prime Back Bay location.

By Jaci Conry // Photographed by Michael J. Lee



Casa Design owner Zhanna Drogbretsky is perched on a luxurious modular outdoor sectional by Giorgetti.

To celebrate the 10th anniversary of Casa Design—the SoWa group that encompasses five luxe modern furniture showrooms—owner Zhanna Drogbretsky wanted to do something big. So she embarked on an ambitious renovation of the group’s first and main showroom: Casa Design Living. The showroom’s new look will feature updated fabrics and finishes, new shapes and colors, and will be spearheaded by renowned New York-based interior architect Jens Ahlemeyer.

While the main showroom is closed for renovations—the Molteni & C Dada,

Giorgetti, Outdoor and Contract remain open—Casa Design Living has set up an expansive pop-up shop behind the Four Seasons Hotel Boston featuring a gorgeous array the showroom’s signature sophisticated and innovative European furniture.

Everything on the showroom floor can be purchased, and as the stock clears out, new items are brought in daily. “It’s an ever-rotating selection of pieces,” says Drogbretsky, whose showrooms are to-the-trade only. “This experience allows us to sell our pieces direct to the consumer for the first time, which is really interesting. It’s fun to be

in a retail setting to see the client’s reactions.”

The 4,500-square-foot space feels elegant and emboldened; pieces on display are from lines including Moooi, Molteni & C Dada, Roda, Kettal, Henge, Giorgetti and Rimadesio. Vibrant green-painted walls evoke the feeling of lush, verdant landscapes—a perfect backdrop for the shop’s ample array of outdoor furniture. The luxe selection includes sofas, dining tables, shelving units, rugs and lighting along with mirrors, small decorative objects and art from the Lanoue Gallery. *On the corner of Charles Street, South & Park Plaza, casadesigngroup.com* ■

LIVING IN BOSTON

design

Clockwise from top: The living room is modern yet warm, with a Hector Finch globe lantern, a George Smith tufted chair and crisp whites throughout; McDonagh designed a custom-sized dining table and banquette around the perimeter of the roof deck; the Farrow & Ball wallcovering and clients' wood-carved statue liven up the original staircase.

GLOBAL INFUSION

A Beacon Hill residence is transformed into a functional family home with reverence to the structure's origins and nods to residents' travels abroad.

By Emma Jackson // Photographed by Evan Sklar





From top: In the dining room, McDonagh refreshed the original beamed ceilings with white paint and a hanging Urban Electric lantern; “The challenge was to provide modern amenities and storage, but keep the integrity of the 19th century structure,” McDonagh says of the Beacon Hill renovation.

After years of moving around the United States and living in London and Bangkok, the homeowners returned to Boston and purchased this five-story, 19th century Beacon Hill brownstone. The stately historic residence needed modern updates geared toward family living, along with some of its authentic architectural charm added back in. To spearhead the project, the homeowner enlisted interior designer Trish McDonagh (patriciamcdonagh.com) to make it happen.

“The house had been stripped of a lot of its original elegance over the years,” says McDonagh. “I wanted to bring a little glamour back, in a tranquil way that was modern, but not out of place in the early-19th century building.”

McDonagh renovated the home in phases so the family could continue living in it throughout the process. One of the biggest tasks was creating storage space to accommodate the whole family. She made smart use of the space throughout the house—installing built-ins and closets in some spots—while showcasing the clients’

sophisticated sense of style, such as building a custom 12-foot sofa designed on-site.

The home’s original staircase was retained, and McDonagh added panel details and trims throughout the house to bring back some charm and give the home a clean, bright feel. The new aesthetic includes artifacts highlighting the clients’ world travels, such as a Robert Polidori photo from Versailles in the living room. Additionally, there are references to the family’s Dutch descent with portraits in the powder room and blue and white delft tiles around the family room fireplaces. The lotus wallpaper in the entry way and staircase symbolizes a pure heart, a nod to the clients’ years living in Bangkok.

The primarily light color palette throughout the home lightened up the space, a challenge when working in the neighborhood’s stacked brownstones. The finished product is both classic and sophisticated. It’s also representative of casual family life thanks to playful elements—like zebra print cashmere chairs and pierced lanterns that create ethnic patterns on the hallway ceiling—sprinkled throughout the home. ■



SIBLING CAMARADERIE

Luxury outdoor furniture brand McKinnon and Harris is helmed by a brother-sister duo whose creativity goes back generations.

By Jaci Conry

McKinnon and Harris' Duval dining armchairs have backs with a striking panel of trellage.



PHOTOS BY KIP DAWKINS PHOTOGRAPHY



Clockwise from top left: The Virginia benches are a cornerstone of McKinnon and Harris; Beaufort club chairs around a cocktail table; Anne and William Massie.



Anne Massie is only 15 months older than her brother, William. “He was my first friend,” recalls Anne. Their bond endured through childhood and into early adulthood when, in 1991, the pair launched McKinnon and Harris, a handcrafted line of aluminum garden furniture made using time-honored techniques and inspired by the beautiful Virginia gardens their grandmothers cultivated. In fact, the company name incorporates both the grandmothers’ surnames: Harris, their maternal grandmother (and Anne’s middle name); and McKinnon, their paternal grandmother (William’s middle name).

“Our parents were also avid gardeners. Growing up, there was a real sense of longevity—of making things that would endure,” says Anne. As adults, the siblings developed a fascination with why certain things lasted and others did not. “In the early 1990s, there was a very disposable mentality when it came to garden furniture,” says William. “You would buy something and it didn’t look so

great in five years. We felt that if we could show people furniture that could look as good as it did when they bought it 20 years later, we could get them to invest in it.”

After studying antiques and other furniture, Anne and William had developed a keen sense of the techniques required to create enduring aluminum pieces. When McKinnon and Harris launched 29 years ago, it was a shoestring operation with a single craftsman working out of its Richmond, Va., studio. Today, the company employs 90 individuals, with 65 working out of the Richmond facility.

And, each piece is made to order. “Everything is made from start to finish under one roof,” says William. “We don’t farm any processes out; we don’t make any compromises on quality. For that fact, we know we can do it better than anyone else.” Moreover, clients are welcome to the showroom to watch as their furniture is built. “In this age of mass production, it’s an incredible experience,” says Anne, who

notes she and her brother are interested in forming long-term relationships with their customers.

McKinnon and Harris also offers a spa treatment program through which clients who have had furniture for a long time may send it to the company for a refresh—part of its lifetime warranty. “If we’ve figured out a better way to engineer the piece, we bring it up to current standards,” explains William. And with 21 powder-coated finishes from which to choose, “We’ll repaint it in a new color,” he adds.

Inspired by Anne’s background as a plein-air painter, McKinnon and Harris’ color palette is pulled directly from the landscape. “Most outdoor furniture collections are offered in colors that are so basic,” says William. “Ours have nuances—a matteness that we’ve really labored over.” It’s just one of the many things that sets the company’s heirloom furniture apart. mckinnonharris.com ■



From top: Uptown Toile offers a flirty spin on the traditional toile depicting "a girl living her best life" in four colorways; the designer poses with her Favorite Things: croissants, topiaries, gold pineapples and Jean-Paul Gaultier's Madonna corset.



SHE CAME TO PLAY

With the launch of her fabric and wallcovering collection for Vervain and her upcoming lighting offerings through Currey & Company, design star Sasha Bikoff infuses interiors with extra sparkle.

By Phebe Wahl

"It has always been my goal to bring life, happiness, love, fun and whimsy into everything I do," says interior designer Sasha Bikoff. Known for her whimsical mashups that blend design styles from 18th century French rococo to 1980s Italian Memphis Milano, the millennial maven recently debuted two magical collections: lighting with Currey & Company and fabrics and wallpaper for Vervain.

"My collection of fabrics and wallpapers was developed because I couldn't find this juxtaposition of both luxury and fun," Bikoff says of the fresh and fun Vervain launch. Uptown Toile delivers a modern riff on an old-world classic in both a fabric and a wallcovering. (Gone are traditional 18th century pastoral picnic scenes in favor of more playful vignettes like Brigitte Bardot on the French Riviera, Serge Gainsbourg and Jane Birkin dancing in a nightclub and Audrey Hepburn walking down Fifth Avenue.) "I am a lover of anything French, and toile has always been a classical pattern that has resonated with me," she adds. "However, I never really connected with the old-world subject matter, so I set off to create a toile that depicted a woman living her best life."



Elsewhere in the range, a lipstick-pink velvet fabric simultaneously nods to the designer's favorite lip gloss and to Salvador Dalí's iconic Lips sofa. "I called it Lipgloss because it has that Wet n Wild look," Bikoff says. Favorite Things (fabric and wallpaper) pays homage to major moments like Madonna's Jean-Paul Gaultier corset and Gwen Stefani's John Galiano-designed Dior wedding dress, while La Discotheque is inspired by Bikoff's own Azzedine Alaïa coat. "The Lurex thread is handwoven, and it's the faintest and most elegant sparkle," she says of the textile, which recalls crushed diamonds set against a midnight sky.

"Fabric has this power to take us to different places and remind us of different things and time periods, and that's what my goal was for this collection: to create something whimsical, feminine, fun and pretty," she says.

Also forthcoming: Bikoff's lighting with Currey & Company—inspired by Miami in the 1950s and '80s—is slated to debut this spring. What can she say? The girl just wants to have fun. *To the trade, The Martin Group, Boston Design Center, martingroupinc.com; curreyandcompany.com; sashabikoff.com*

CREATE
SOMETHING
REMARKABLE

PHOTOGRAPHY: READ MCKENDREE

LISA THARP INTERIOR ARCHITECTURE + DESIGN

MELLOWES AND PALADINO ARCHITECTS

JW
CONSTRUCTION
BOSTON | CAPE COD

jwconstructioninc.com

TOP SHELF

These vibrant volumes emphasize the art of outdoor living.

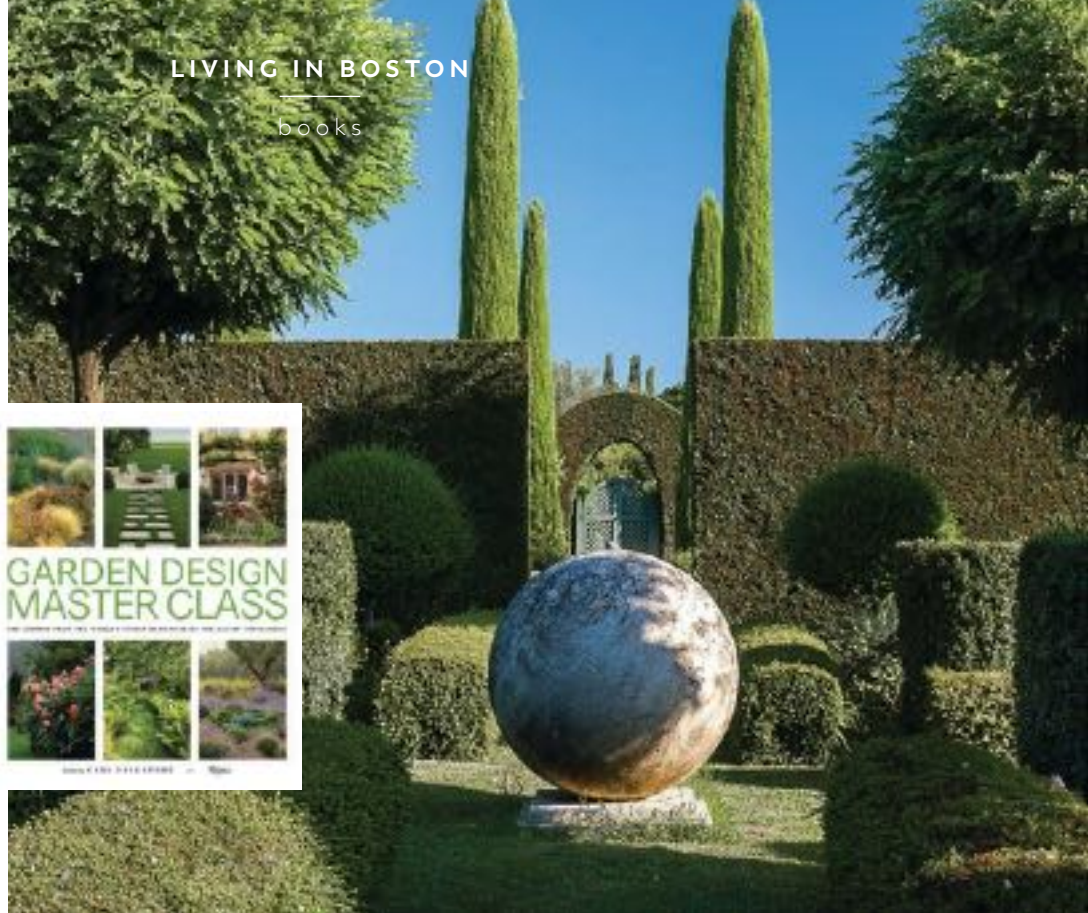
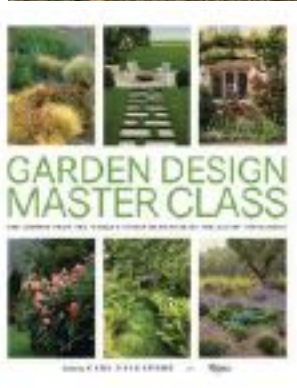
By Jaci Conry



Small Garden Style: A Design Guide for Outdoor Rooms and Containers A beautifully photographed guide by Jennifer Blaise Kramer and Isa Hendry Eaton, *Small Garden Style: A Design Guide for Outdoor Rooms and Containers* (\$22, Ten Speed Press) focuses on creating compact outdoor spaces that are high on style. A quiz dials in on your personal garden style—be it traditional, modern, colorful, eclectic, minimalist or globally inspired—and then the authors weigh in on how to maximize every aspect of your alfresco haven. You'll learn how to design stunning planters and container gardens using succulents, grasses and vibrant colored pots, as well as gather ideas for making garden accents and much, much more.

LIVING IN BOSTON

books



Garden Design Master Class: 100 Lessons From the World's Finest Designers on the Art of the Garden Textile designer and seasoned author Carl Dellatore has collected deeply insightful essays by some of the top garden designers—including Carolyn Roehm, Nancy Goslee Power and Arabella Lennox-Boyd—working today in *Garden Design Master Class: 100 Lessons From the World's Finest Designers on the Art of the Garden* (\$60, Rizzoli). Spanning styles and genres, the essays and accompanying images impart both practical and stylistic design advice and are broken into six thematic sections: Theory, Process, Style, Structure, Elements and Inspiration.

GARDEN DESIGN MASTER CLASS PHOTO BY ROGER MOSS; POOLS PHOTO BY DYLAN AND PARIS BROSNAN; BOOK COVER PHOTOS COURTESY OF PUBLISHERS



Pools: Lounging, Diving, Floating, Dreaming: Picturing Life at the Swimming Pool Pools are the ultimate icon of outdoor living and this gorgeous book edited by writer, curator and broadcaster Lou Stoppard is an ode to them. Organized by theme, from the glamour of the poolside party to the simple, meditative pleasure of being in the water to pools in fashion photography and architecture, the images in *Pools: Lounging, Diving, Floating, Dreaming: Picturing Life at the Swimming Pool* (\$65, Rizzoli) are by celebrated photographers such as Alex Webb, Martin Parr, Alice Hawkins and Nick Knight. Stoppard has long been fascinated with pools, and her affinity for the concrete oases is apparent in the striking images and melodic prose—which includes interviews with other notable pool aficionados—showcased throughout the book.



Dover
RUG & HOME

NATICK BOSTON BURLINGTON 800.368.3778 DOVERRUG.COM



The doorway between the kitchen and dining area was expanded and the interior window was enlarged to create cohesion between the spaces.

MATERIAL THINGS

A cohesive neutral palette centered on white oak gives this home a casual California-inspired vibe.

By Jaci Conry // Photographed by Michael J. Lee

As empty nesters, the homeowners downsized from a three-story, five-bedroom Victorian in Cambridge and established a more permanent home base in Silicon Valley. Yet their strong ties to Boston necessitated a home here, so the couple purchased a townhouse in Jamaica Plain overlooking Jamaica Pond.

While the view, nestled into a secluded wooded hillside, was wonderful, the condo had seen much better days, recalls interior designer Annie Hall (anniehallinteriors.com), who toured the home with the wife just before the couple purchased it.



White oak paneling in the master bathroom creates a clean and warm appeal.

“My client had the imagination to see that the neglected condo, despite its damaged walls, rotting door and window frames and stained carpets, was worthy of a renovation,” says Hall. “I could also see the great potential of the space. The way the condo was nestled into a woody hillside, the soaring angled ceiling and the large and numerous windows—all with views toward the pond—made it a compelling and worthy project.”

As soon as the couple, who sought to give the place a casual aesthetic that exuded a California modern coastal vibe, closed on the property, a gut renovation, led by BSA Construction and Development (bsamanagement.com), began in earnest.

The wife showed Hall photos of a home she loved in Los Angeles. The predominant aesthetic of the home was a calm, unified look brought about by a consistency of materials, mainly white oak. “I thought white oak would be the perfect material to transform this space into a bright and peaceful urban oasis for the couple,” says Hall. The townhouse had dark stained cabinetry in the kitchen and bathrooms and wall-to-wall carpet on the floors. “Using



In the living area, a Verellen sectional, purchased at Artefact Home|Garden, is paired with a Hubbardton Forge ceiling light fixture and the homeowners' shag rug.



white oak for flooring, cabinetry, paneling and ceiling beams, we created a palette that is restrained and neutral with creams, nudes and blacks,” she says.

The palette was used in all rooms, including the bathrooms. It is especially impactful in the master bathroom, where Hall strove to create a spalike experience. In the tub and shower area, Hall had the walls, floor and tub sheathed in white oak. “I wanted the white oak brought upstairs so the two levels of the home looked completely integrated,” says Hall. “The wood also adds a nice sense of warmth into the bathroom.”

While the entire interior was overhauled, the footprint had to stay the same, so thoughtful reconfiguring was required to accommodate spatial needs. The second bedroom was divided into two separate sleeping spaces via sliding doors, and the opening between the kitchen and dining/living area was expanded. “We did that to expand the open feeling going out toward the big windows overlooking the pond,” says Hall. “No one likes a kitchen that is completely separate these days.” ■

BEHIND CLOSED DOORS

Behold: the neater way to store your bar accoutrements.

By Lauren Finney Harden



Cabinet No. 455, \$9,167, thenewtraditionalists.com



Aficionado cabinet in Piano Black, \$13,585, by Caracole at Bloomingdale's, The Shops at Chestnut Hill, Chestnut Hill, bloomingdales.com; caracole.com



Lacca Veneziana bar cabinet, \$6,288, maitland-smith.com



Poppy armoire, \$6,469, by Selamat at Trellis Home, Hingham, trellishome.com; selamatdesigns.com



Fabienne bar cabinet, \$5,400, by Interlude Home at Icon Group, icongroupinc.com; interludehome.com



**YOUR
DREAM
HOME IS
WAITING.**

*Call today
to schedule
an appointment.*

781.729.0405
www.kr-id.com

KRISTEN
RIVOLI
INTERIOR
DESIGN



Saniko Bendy Dance rug in stone, to the trade, Patterson Flynn Martin, Boston Design Center, pattersonflynnmartin.com



Beaumont settee, \$2,950, jonathanadler.com

TAKE IT AWAY, BOUCLE!

This underrated nubby texture finally gets the design credit it's due.

By Lauren Finney Harden



Barroco boucle pillow in denim, to the trade, curatedkravet.com



Hazel swivel chair in mustard, \$1,575, luluandgeorgia.com



Hopscotch place mat, \$20 each, by Chilewich at Lekker Home, lekkerhome.com; chilewich.com

Esmark fabric in Dove, to the trade, Schumacher, Boston Design Center, fschumacher.com

PHOTOS COURTESY OF BRANDS

10 YEARS OF DESIGN AND STYLE



Visit our showrooms:

Living | Outdoor | Contract | Molteni&C Dada | Giorgetti

460 Harrison Ave, Boston, MA 02118 888-246-6451 casadesigngroup.com

Trilogy horizontal pendant, \$10,100, articolighting.com



ROARING '20S

After a century of brilliant style, art deco still looks modern and fresh. With constant reinvention that stays true to the originally shocking strong lines and bold graphics, this look shows no sign of its age.

By *Laura Hine*



McLaren sailfish sculpture, limited edition of 20, \$69,000, laliq.com



Park Avenue sofa, to the trade, vladimirkagan.com



Il Pavone throne, to the trade, by Marc Ange for Visionnaire at visionnaire-home.com



Erté "Flapper" serigraph, price upon request, martinlawrence.com



Join tile collection, \$20 per square foot, caesarceramicsusa.com



Posea bench with cushion top, \$299, by Bolia at haute-living.com

PHOTOS COURTESY OF BRANDS



GLOBAL
LUXURY



192 COMMONWEALTH AVENUE, #9 | \$4,000,000

2759 SQFT. | PENTHOUSE ON ONE LEVEL WITH ONE OF THE LARGEST ROOF DECKS IN BACK BAY

Penthouse home on prestigious Commonwealth Avenue. 3 bedrooms and a library with wonderful Back Bay Views. Enjoy one of the largest roof decks in the City from this one level gem. Live in Superintendent.

DAVID MACKIE

617.480.6044

David.Mackie@NEMoves.com

www.DavidMackieProperties.com



BACK BAY | 617.247.2909 | 399 Boylston Street, Suite 200

WWW.COLDWELLBANKERHOMES.COM



Real estate agents affiliated with Coldwell Banker Residential Brokerage are independent contractor sales associates and are not employees of Coldwell Banker Residential Brokerage. © 2020 Coldwell Banker Residential Brokerage. All Rights Reserved. Coldwell Banker Residential Brokerage fully supports the principles of the Fair Housing Act and the Equal Opportunity Act. Operated by a subsidiary of NRT LLC. Coldwell Banker® and the Coldwell Banker logo are registered service marks owned by Coldwell Banker Real Estate LLC.

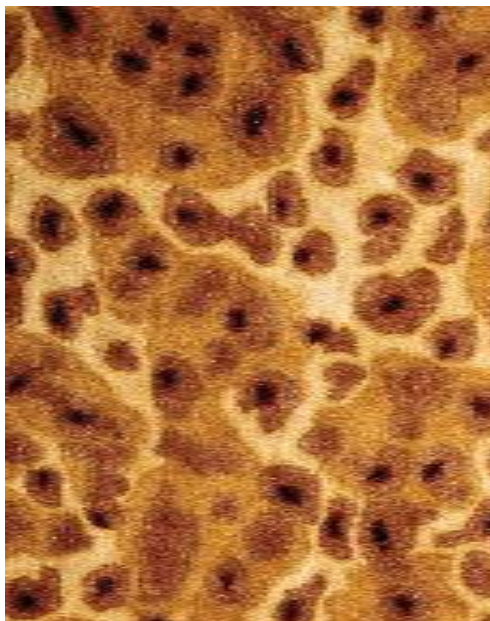
MAGIC CARPETS

Three new rug collections combine artistry and exquisite materials.

By Jaci Conry

SCOTT GROUP STUDIO

Designer Billy Cotton is known for his intelligent approach to space. While his specialties are vast—his Brooklyn-based firm includes architecture, interior design, furniture and lighting—he's not trained as a textile designer. Yet Cotton's passion for American-made artisan elements led to his recent collaboration with Scott Group Studio on a handtufted rug collection. Designed and produced at Scott Group Studio's headquarters in Michigan, Cotton's debut collection centers on various geometric patterns and motifs, including Tracery, an expanded box form in various color combinations. Kenar is a nod to 1930s elegance, taking the form of a solid-color carpet festooned with a meandering, intricate border pattern. Tortoise Shell and Hibiscus are other impactful, multifaceted designs in the collaboration. *Boston Design Center, scottgroupstudio.com*



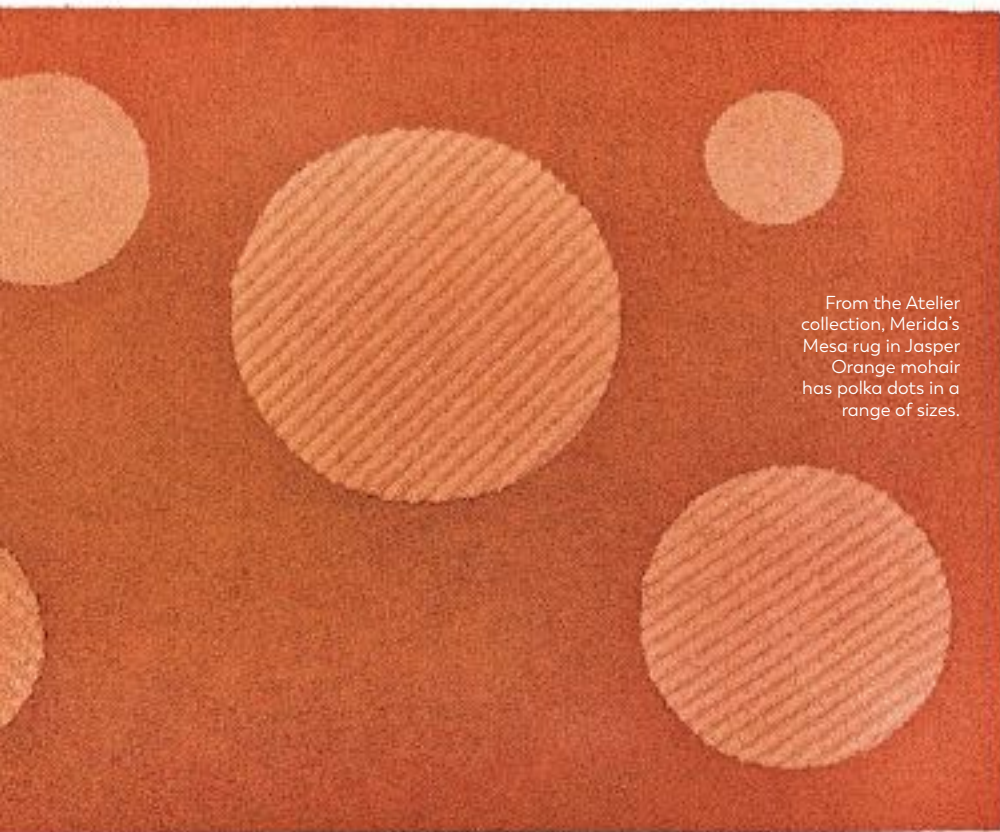
From top: The Hibiscus pattern evokes a sense of fun, brightness and cheer; Billy Cotton's silk-blend Tortoise Shell rug design stems from his personal affinity for the motif.

SHIIR

SHIIR's latest rug collection, Realm, blends traditional craftsmanship with innovative techniques while delivering a fresh take on its signature luxurious rugs. "We wanted to explore ways to put a variety of complex weaving techniques together to create exciting new textures in our flat woven rugs," says SHIIR co-founder Shea Soucie. "They're visually interesting and all about depth." Realm introduces textures to pair with SHIIR's glorious wool standards—think silk chenilles, linen and cashmere—along with more casual yet rich designs. All the handwoven rugs are customizable, and the collection features both monochromatic and complex color combinations, with several designs evoking 1970s palettes. The nine designs—Binden, Brode, Cru, Intero, Kett, Merrin, Powell, Rand and Sashiko—include mixes of warm and cool tones, as well as unexpected, artful embroidered and handknotted designs all inspired by cultures and artistic traditions the world over. shiirrugs.com



SHIIR's Realm collection includes Cru, a stripe-on-stripe pattern featuring Mongolian wool.



From the Atelier collection, Merida's Mesa rug in Jasper Orange mohair has polka dots in a range of sizes.

MERIDA

Designed by Sylvie Johnson, Atelier is Merida's latest collection. Utilizing both powered looms and handwork out of Merida's factory in Fall River, Mass., Atelier takes cues from geography and archeology—an ode to the colors and textures of the earth with various geometric shapes and patterns. Weaves are inspired by the Uinta Basin in Colorado, Arrastra Mountain Wilderness in Arizona, the Sahara, volcanic calderas, desert rock formations and the verbena desert plant. As such, the collection features earthy light colors, such as Parchment, Pebble and Natural, contrasted with bold, bright colors, like Saffron Yellow, Jasper Orange and Walnut. Atelier exudes Merida's commitment to reimagining heritage textile manufacturing techniques. One example is a new "reverse twist" wool weaving technique, resulting in a tufted, crimped yarn for a softer, thicker pile that creates a sculptural look. It's a product that not only feels luxurious underfoot, but also one you can feed good about supporting: The wool hails from New Zealand and Great Britain, where strict regulations on animal welfare are enforced. *Boston Design Center, meridastudio.com* ■



AROUND THE WORLD WITH MICHELLE NUSSBAUMER

By Mimi Faucett Trahan

“When people collect what they love it always goes together,” says Texas interior designer Michelle Nussbaumer. The object of her affection? Textiles. Museum-quality, ancient, embroidered, block-printed and handpainted in yards, remnants, poufs, pillows, blankets and sketches—pieces she’s collected for decades from every corner of the world. And pieces that have come to life

in her debut line of fabrics and trims with Clarence House.

Based in Dallas, Nussbaumer owns her own design trove, Ceylon et Cie, in the city’s Design District, but when asked how often she’s actually in Texas, she bursts into laughter. Just this year she’s jetted to Tangier, Switzerland, France, London and Mexico, “and don’t forget High Point,” she quips. Naturally, it was over drinks in Paris when the designer was first introduced to the team at Clarence House. “Sometimes when you do a collaboration—of which I’ve done lots—people don’t always want all your ideas. They try to tone it down a little,” she explains. “With Clarence House, they wanted everything I wanted. ‘Whatever crazy color you want—whatever is *you*,’ they said, ‘That’s why we did this with you.’ It was super liberating.”

It was a match made in heaven, or in some cases

Morocco, India or Mexico—all of which informed her eventual collection of 10 fabrics and 15 trims, which launched in the fall at Paris Déco Off. The color-drenched fabrics tell stories of American crazy quilts Nussbaumer has amassed over the years, archival French handblock prints, silk fragments from an Uzbek coat procured at Istanbul’s Grand Bazaar, vibrant serapes that fill the designer’s hacienda in Mexico, Mayan corn gods, Moroccan blankets, Indian palampore and more.

In the trims, Nussbaumer called on years spent riding horses, citing Andalusian and Arabic bridlery as inspiration.

And though the collection is certainly bold, the designer argues that myriad colorways (creams, soft blues, blacks) let you tone it down—or amp it up!—to match your style preference. Her pick? “It’s so hard,” she says. “There’s this damask that is so beautiful... I love the Kukulkan... the Fez. And I really need the crazy quilt in my life somewhere.” We’ll stay tuned. *The Martin Group, Boston Design Center, martingroupinc.com; clarencehouse.com; michellenussbaumer.com*

Clockwise from left: Dallas designer and perpetual wanderluster Michelle Nussbaumer; on a trip to Guatemala, Nussbaumer fell so in love with an ancient Mayan pattern that she had a version of it painted on a wall in her Mexican hacienda. The pattern was later rendered in Kukulkan linen; try the Sultanament tassel on the four corners of a throw pillow; the designer’s Joseph’s Coat fabric in Aegean and Fez embroidery in indigo told a colorful story at the Ancien et Moderne showroom during Paris Déco Off.





Eric Roth Photo

RENOVATION PLANNING & INTERIORS

SPACE PLANNING – INTERIORS – KITCHEN + BATH

51 CHARLES STREET, BOSTON, MA. 02114 617.236.7399 WWW.RENOVATIONPLANNING.COM



Clockwise from left: The Philippe Starck-designed Fenc-e Nature sofa, which is part of the new outdoor collection by Cassina; Sail Out modular sofa by Rodolfo Dordoni with Patricia Urquiola's Trampoline and Bowy coffee tables; low Bowy coffee table, from \$2,335, higher Bowy coffee table, from \$2,775, both by Urquiola for Cassina.



TAKE IT OUTSIDE

Cassina brings its modern aesthetic to nature with its first complete outdoor collection.

By *Laura Hine*

January in Germany—during IMM Cologne—might not seem like the ideal time to think about the great outdoors, but for Italian modern furniture-maker Cassina, it was an important moment to showcase the new and already iconic pieces that make up its debut outdoor collection. “We decided to involve two important designers to develop this very first outdoor collection,” says Luca Fusco, CEO of Cassina. “Philippe Starck and Rodolfo Dordoni have worked with Cassina for many years. Each has interpreted

the outdoors in his own distinctive way, but with the same quality, craftsmanship and authenticity that is part of Cassina’s DNA.” Starck calls his contribution Fenc-e Nature, a “lifestyle collection of laid-back elegance,” and it contains an armchair, two sofas and a coffee table. Dordoni’s Sail Out modular sofa is inspired by a 1950s holiday resort and is infinitely combinable with a round pouf, a low table, and Dine Out chairs and table. Adding to the fun, Cassina introduces two pieces by Patricia Urquiola in advance of

her anticipated complete collection, which will launch in 2021. Plus, longtime favorites from Cassina’s collection are adapted for outdoor use. “It represents the history of design in one complete setting,” says Fusco. “Innovative products by Dordoni, Starck and Urquiola are united with the icons by Le Corbusier, Pierre Jeanneret and Charlotte Perriand to create warm and welcoming atmospheres... all studied for the outdoors.” *Montage, 75 Arlington St., montageweb.com; cassina.com*

TOP PHOTOS BY DEPASQUALE MAFFINI; BOWY OUTDOOR TABLE PHOTO COURTESY OF BRAND



**GLOBAL
LUXURY**

From the Back Bay, Waterfront and Seaport -
to Winchester, Lexington and Concord

From restaurants, galleries and shopping -
to excellent schools, sports and parks

Live luxuriously YOUR way -
make your lifestyle move today!

FINEBOSTONLIVING.COM

Elizabeth Crampton, CRS
Call me at 781-389-4400

FineBostonLiving.com
Coldwell Banker Residential Brokerage

*Elizabeth
Crampton*
FINE BOSTON LIVING

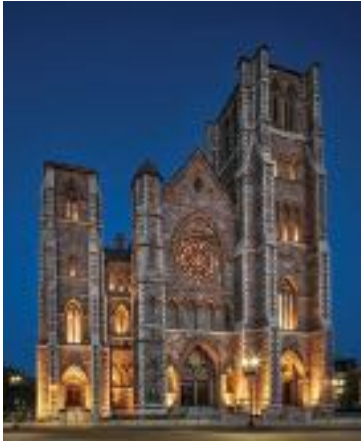
FINEBOSTONLIVING.COM

30Oakmount.com

SACRED SPACE

The iconic Cathedral of the Holy Cross is restored to reflect its original grandeur, with a few modern touches.

By Jaci Conry



The striking Cathedral of the Holy Cross, one of Boston's most architecturally significant structures, was originally consecrated in 1875 and built in the Gothic Revival style using local Roxbury puddingstone, massive imported stained glass windows and gray limestone trim. At the time it was built, the cathedral had the largest organ in North America. Today, the cathedral, which soars 120 feet high, remains the largest church

in New England. After nearly 150 years of use, and without a significant renovation in decades, the cathedral was declining. The Archdiocese of Boston recently tapped Elkus Manfredi Architects (elkus-manfredi.com) to renovate and revitalize the structure.

"The Cathedral of the Holy Cross is not only the seat of the archbishop of Boston and a very special worship space, it is also a very important civic building in the city and in the South End.

Twenty-five thousand people attended the laying of the cornerstone in 1867. These were the immigrants from Ireland, Italy, Poland and many other European countries who became the builders and leaders of modern Boston," says David Manfredi, CEO and founding principal of Elkus Manfredi Architects.

Manfredi's team took inspiration from the church's interior details to design new furnishings that would feel a timeless part of the larger whole. To further establish a feeling of permanence, some new appointments are made of marble, not wood, and include a new altar.

"We were very committed to introducing new technologies in lighting, safety and space conditioning that transformed the guest and worship experience and that vastly improved the comfort and sustainability of operations in ways that did not distract from the character of the historic building," says Manfredi. "We reconfigured the sanctuary to reflect today's sacramental practices, and we introduced stone flooring to ensure the durability of the investment. We touched almost every surface in the interior of the main cathedral but always with great respect and deference to the history of design and events that make the cathedral a very special place."

The cathedral's meticulous refurbishment has garnered Elkus Manfredi numerous design awards, including the Architecture MasterPrize for Restoration & Renovation.





Kitchen Confidential

The South End will welcome a new showroom to the neighborhood in April, when British brand **Christopher Peacock** unveils a gleaming new location. The ample, newly renovated space enables the line of handcrafted cabinetry to be displayed on two levels. The stand-alone showroom, which will replace Christopher Peacock's former location at the Boston Design Center, will showcase its latest Hudson Collection, a more modern aesthetic of cabinetry. Also on display for the first time in Boston will be the recently updated Lambourne Collection, a more traditional collection of cabinetry that takes inspiration from 16th century rural farmland next to Peacock's hometown northeast of London. The collection is influenced by the local church and Lambourne Hall, where the designer was inspired by paneling detail that was so simple yet so appropriate for its surroundings. 520 Harrison Ave., peacockhome.com -JC ■

Prolific Patterns

A-Street Prints

(astreetprints.com) is an offshoot of Brewster Home Fashions (brewsterwallcovering.com), a Boston-based brand that has been a staple of the home decor industry since 1832. A-Street, a startup on the scene since 2015 that has received much buzz for its vividly patterned wall coverings, recently launched a collection with HGTV's Drew and Jonathan Scott. Scott Living's printed palette centers on a sophisticated palette of navy blues, tans and gray tones that come together in various motifs, including textured chevrons, botanicals and geometric shapes. A-Street's newest collection debuts this year and includes Equinox, in which archival prints are boldly reimagined, and Bluebell, a collection of more playful patterns created from both modern and vintage inspirations. -Modesty Sanchez



PHOTOS COURTESY OF BRANDS

QUIET ELEGANCE

Beth Webb is the latest designer to collaborate with Arteriors.

By Lauren Finney Harden

Atlanta-based designer Beth Webb of Beth Webb Interiors (bethwebb.com) has big news: Her first licensed collection debuts this spring. In partnership with Dallas-based Arteriors (arteriorshome.com), the 34 pieces across lighting, accessories and accent furniture exude serenity and elegance and are, more importantly, livable. Influences for the collection come from all over and include the work of Diego Giacometti, Ethiopian string jars and ancient Roman glassware, with names derived from some of Webb's favorite people and places. Her simple sophistication and love of texture are evident throughout ("I use texture as color," she notes).

Known for making rooms as beautiful as they are useful, Webb draws on her fine arts training to find form, line and scale and add play into a space—and these pieces are no exception. "You learn from looking," she says. "The eye has to travel." This ethos makes sense: Webb is, after all, author of *Beth Webb: An Eye for Beauty: Rooms That Speak to the Senses* (\$50, Rizzoli). Here, she shares her favorites from the collection. ■

Atlanta-based interior designer Beth Webb



"This trio was designed to be multifunctional, as with so many other pieces in the collection. They're happy to find a home in a kitchen pantry or a bath, or remove the lids and use as planters or vases."

Palm canisters, to the trade

PHOTOS COURTESY OF BETH WEBB INTERIORS



"A lifelong love affair with wicker and rattan inspired this light and airy Sea Island pendant. Not only is it a refreshing fixture with its combined materials of rattan and linen, but it casts patterned light play with its horizontal and vertical basket weave."

To the trade



"The ubiquitous drinks table—we can never have too many options, and the Graeme is one handsome, hardy guy—both indoors and out."

To the trade



"I've always been fascinated by the organic, sensual shape of the naturally shed wild fallow deer antler. Both sculptural and emotional when paired with crystal and nickel, it becomes a sophisticated accessory in any home."

Jackson lamp, to the trade



"Cylinders are such an elemental form, and I adore a glass cylinder more than anything. Combining wood, iron and glass with an ivory candle sleeve keeps it elementally simplistic and strong."

Sumpter candle chandelier, to the trade





LIGHT THE NIGHT
Raffia candle sleeve, small for \$28, by AERIN at Neiman Marcus, Copley Place; aerin.com



SIT A SPELL
Outdoor Zoe queen chair, \$1,650, mainlybaskets.com



HANG AROUND
Outdoor Cacao swing in handmade crochet and UV-protected yarn with Burmese teak wood, \$1,250, by Iota at 1stdibs.com

THE GREAT OUTDOORS

The latest launches offer an inside-out approach to outdoor living. Create alfresco rooms with luxe lounges and opulent textures—or a playful outdoor bed or bath to truly enjoy life under the sky.

By Phebe Wahl



SOAK IT UP
Mendocino NativeStone free-standing soaking tub, \$8,800, by Native Trails at The Portland Group, Roxbury, theportlandgroup.com; nativetrailshome.com



SWEET DREAMS
Boxwood daybed, \$19,545, Januset Cie, Boston Design Center, janusetcie.com



ROUND ABOUT
Woven charger, \$24, jennikayne.com

PHOTOS COURTESY OF BRANDS

JEANNE RACIOPPI DESIGNS

INTERIOR DESIGN • CONSTRUCTION MANAGEMENT
BOSTON • NEWPORT • MIAMI

JEANNE@JEANNERACIOPPIDESIGNS.COM
JEANERACIOPPIDESIGNS.COM | 781.820.1505





Stylist-turned-interior designer and The Eye founder Estee Stanley—who debuted her first book last fall, *In Comfort and Style: Rooms with Casual Elegance* (\$45, Rizzoli)—crafts a timeless mood whether it's an outfit or a room's decor.

EYE OPENER

With the debut of her agency, The Eye, Estee Stanley redefines the rules of the game for the design trade.

By Phebe Wahl

“When I was a stylist I had an agent,” states celebrity stylist-turned-interior designer Estee Stanley (esteestanley.com). “So when I first started doing design, I used to beg my agent to do all of my negotiations with projects, and she absolutely refused.”

The L.A.-based tastemaker—whose eclectic interiors earned her a cult following and A-list clients such as Patrick Dempsey, Ellen Pompeo, Jessica Biel and Justin Timberlake—however, always found the back end of business baffling. “When it comes to fees,” she says, “doing it through your office manager or one of your assistants always felt very unprofessional. It didn’t ever sit right with me.”

After hearing design friends lament similar issues, she sought a better solution. “I felt there were no boundaries between clients and designers,” Stanley says. “I’ve had clients who call me on Sunday mornings, and I know people who have clients who call them all daylong and make them drop everything to show up at a project. That’s not how this business

should be working,” she declares.

Through her newly founded design community agency, The Eye (theyeyeagency.com), which boasts top-tier clients like Ryan Korban, Adam Hunter, Fran Hickman and Chiara de Rege, Stanley and her team oversee contract negotiations, find projects and develop brand relationships to grow each interior designer’s business. “No one is really building these people’s brands,” Stanley says, explaining that many designers simply don’t have the bandwidth to explore potential brand collaborations. The Eye also standardizes fee structures so there are fewer surprises for both the client and the designer. “People shouldn’t have to work for free or cross their fingers and hope to sell a sofa to pay their car payment.”

With the launch of The Eye, Stanley debuts one of her most monumental and, hopefully, enduring projects to date. “It’s important to build these people,” she says. “They’re very important in the sense of creating this planet and making it a beautiful place for everyone to live.”

Designer: Reid Design Inc | Photography by: Greg Premru



Designer Draperies OF BOSTON

YOUR TRADE WORKROOM

516 E. 2ND STREET, B23 | SOUTH BOSTON, MA 02127 | 617-268-2391 | DESIGNERDRAPERIESOFBOSTON.COM



Jeff Soderbergh, in his Portsmouth, R.I., showroom, perched on one of his own creations

PURSUING THE PAST

For three decades, furniture maker and sculptor Jeff Soderbergh has made it his mission to breathe new life into old objects.

By Samuel Levy

Photographed by Eric Levin

Jeff Soderbergh has always had a fascination with making things. Starting from a young age, the innovative and prolific Massachusetts-based craftsman experimented with reclaiming materials, an approach that has since become his calling card for New England clientele. “I would combine existing things and try to make them work,” he says of his early days, “like a bicycle and a pair of skis or a birdhouse and a toy sailboat.” Flash-forward to now: Soderbergh has made a name for himself creating furniture and sculptures from unlikely sources that are often rife with historical value, including pieces of the Berlin Wall and the Coney Island boardwalk.

He has two showrooms, one in Wellfleet and one in Portsmouth, R.I.; his Wellfleet studio is like a work of reclaimed art in and of itself. Located on a hillside, the ample two-level space is housed in a historic post-and-beam barn from the early 1900s that hosts a large sculpture patio and a garden. Amazingly, Soderbergh has no formal training in the arts—however, he says that what seems like an obstacle has, in fact, “unencumbered” him and allowed him to develop his own unique aesthetic.

Despite the fact that much of his output serves a functional purpose, he is also deeply concerned



From top: The dark table in the left foreground is a dining table crafted using oak flooring from Chicago freight train cars circa 1940; the light wood for this tabletop came from one of the oldest trees in Vermont, a sugar maple that produced countless gallons of sap for syrup.

with the visual, tactile and conceptual beauty of each piece—this, in part, has motivated him to continue making use of reclaimed materials. “There is a color and texture that nothing but time and exposure can create,” he says, and his impressive body of work, with its lovely patinas and earthy, naturalistic quality, serves as a testament to this notion.

Though he has a deep admiration for Japanese and Scandinavian design, as well as sculptors like Andy Goldsworthy and Tom Deining (both of whom also experiment with salvaged material), Soderbergh’s style and approach are uniquely his own. It was a challenge at first to get his business off the ground when he opened his first studio in the late 1990s, but his work has become highly sought-after and in demand over the past few decades due in large part to its undeniably high quality. “Once I stumbled onto this path, I’ve kept picking up speed,” he says. In addition to being commissioned by major companies like Ralph Lauren and Tommy Bahama, his creations have been honored with various awards at furniture shows throughout New England.

With his talented team of artisans, Soderbergh strives to produce work with a lasting cultural impact. His reasons for using reclaimed materials like ballast stone, vintage cast iron, windfall trees and cast-aside wood from factories and churches are partly but not entirely aesthetic. “We live in a world of mass consumerism as part of a throw-away society,” he says. “It is crucial that we abandon our current path if we want to enjoy the world we all share and leave it for future generations to experience it as we have.” It seems that with every new sculpture or piece of furniture Soderbergh creates, he brings us a little closer to achieving this goal.

11 W. Main St., Wellfleet; 549 Park Ave., Portsmouth, R.I.; jeffsoderbergh.com ■



Martha Stewart used her own experience with California Closets to develop a signature line with the brand; The Everyday System can be used as a pantry in the kitchen; it's also suitable for a home office.

FORM & FUNCTION

Amp up spring cleaning with swanky storage solutions from design diva Martha Stewart.

By Christine Benedetti

Leave it to the queen of reinvention to partner with a legacy brand and make it distinctly her own. That's what happened when Martha Stewart invited California Closets into her Bedford, N.Y., home to transform an extra bedroom into a custom walk-in closet. "We installed the most beautiful closet, and it ended up being one of the most popular features in *Martha Stewart Living*," she says. "That was the start of my relationship with California Closets. This will be their first-ever modular closet system, and I'm so glad to be part of it."

The two announced The Everyday System in February, making customizable modular storage solutions approachable, with classic Stewart elements such as graphite and gold metal accent colors and a metal mesh door that allows clothes to breathe and easily be seen.

Functionality, however, is the system's signature component: It can be installed and reinstalled, transitioning from organization in a home office to a pantry or a media room as needs change. Hundreds of structural combinations are connected to the wall at only two points, and a proprietary track system conceals adjustable shelving, hanging areas and shoe storage. Thoughtful touches include a USB port and outlet for charging or home office adaptability.



But before tackling the closet with this upgrade, Stewart has some advice: "You need to go into organizing your closet with a plan in place and have designated areas for your various types of clothes—shoes, blouses, sweaters, pants. These should all be separate and have their own space, even if it is not terribly large," she says. "I also like to keep seasonal pieces I don't need stored away to free up space." *From \$999, 1660 Soldiers Field Road, Brighton, californiaclosets.com/martha-stewart*

REFINED CRAFTSMANSHIP + INSPIRED DESIGN



Jewett Farms + Co.

CABINETS SOAPSTONE FLOORING

YORK, ME. GLEN ROCK, NJ. BOSTON, MA. SAN FRANCISCO, CA

JEWETTFARMS.COM 978.961.1538

The family room's Ferrell Mittman sofa and lounge chairs echo the same coloring as the Robin Gray carpet. The painting is by Hunt Slonem.





In the dining area, the custom Palo Samko dining table is paired with vintage Tomlinson chairs, from Reside in Cambridge. The focal point of the space is the Ochre chandelier, cast in bronze with hand-blown glass drops that dangle end to end.

PLACE THE PERMANENCE

A SUBURBAN RESIDENCE IS TRANSFORMED TO
BECOME THE FOREVER HOME OF ITS INHABITANTS.

*By Jaci Conry
Photographed by Jared Kuzia*



In the master bedroom, a tall custom headboard adds impact. A Tai Ping rug and the Oly chandelier infuse the room with modernity, while vintage Murano lamps on the bedside tables nod to another era.

After living in this traditional center-entrance Colonial in Newton for several years, the homeowners, a couple with three daughters, pondered a move. They needed more space for the girls, ages 4, 12 and 14, to spread out. “Yet after extensive thought and research, the homeowners ultimately decided that they loved their neighborhood and wanted to stay in the house for the long haul,” says interior designer Andra Birkerts, who collaborated with architect D. Michael Collins to make the home conducive to the way the family lives.

Birkerts had worked with the family eight years prior on refreshing the home when they first moved in; later, she designed their summer home in Rhode Island. So when it came time to transform the house, she had a keen sense of her clients’ personalities and lifestyle, which had changed considerably since they had bought the house.

“The house needed a new identity,” says Birkerts. “With three daughters and two professional parents, functionality, individual interests and workspaces were critical to the program,” says the designer, noting that the renovation and addition included carving out space for a music room, study room, two offices for the parents and a spacious mudroom with voluminous storage along with a lower-level movie theater and exercise room. “Spaces were designed to encourage creative expression and to give practical order to the family’s everyday routine.”



From top: In the hallway, three works by artist Kalish make a statement; a Desiree pod lounge in the library is upholstered with fabrics by Cowtan & Tout and Osborne & Little.





Bedrooms and bathrooms were enlarged, and a new kitchen, designed by Venegas & Company, became one of the home's focal points. The addition weaves the old and new throughout the interior, and many rooms were inspired by the couple's art collection.

Soft but complex muted tones were used carefully throughout the home. A very quiet, tonal palette was preferred in the master bedroom, where a vaulted ceiling is painted in a pale pink-toned hue, Simplicity by Benjamin Moore. "We wanted to do something dramatic but not overwhelming there," recalls Birkerts. "The ceiling configuration made it possible to use a paint treatment that would really accentuate it without overwhelming it." More vivid shades were used in other spaces, including the kids' bathrooms, where patterned tiles infuse vibrancy, and the family room, which Birkerts describes as "a burst of blues and color related to a beloved painting."

The dining room was removed in order to accommodate an eat-in kitchen with enough space to install a generous fireplace. "We had to edit some nostalgic pieces of furniture from the past that didn't really work anymore and consider the family's new lifestyle with older children very carefully," says Birkerts.

Bold modern choices in lighting and furnishings are found throughout, as is seen in the hallway with the horsehair wall sconces from Apparatus Lighting. The Ochre Round Seed Cloud chandelier above the dining table is also a showstopper; cast in bronze, gorgeous handblown glass drops dangle from end to end. "It was a bit of a leap and in some ways it's extravagant, but it's functional and beautiful and it works really well in the area," says Birkerts. "We've really enjoyed the unfolding of spaces in this house—the risks taken, the new materials and unusual designs used—it's quite special to see how it all works now for the family." ■





The kitchen's bleached walnut cabinetry is painted Benjamin Moore Pewter and Deep Secret. Opposite page: A botanical Fromental wallcovering, marble countertop and a brass sink work to create richness in the powder room.

DESIGN DETAILS

TYPE

Single-family residence

LOCATION

Newton

INTERIOR DESIGN

Andra Birkerts

andrabdesign.com

ARCHITECTURE

D. Michael Collins Architects

dmcarch.com

BUILDERS

Youngblood Builders

youngbloodbuilders.com

KITCHEN DESIGN

Venegas & Company

venegasandcompany.com

RESOURCES

ARTERIORS

Family room floor and table lamps

arteriorshome.com

LINDSEY ADELMAN

Family room ceiling fixture

lindseyadelman.com

OCHRE

Kitchen sink pendant light, dining

room chandelier

ochre.net

PALO SAMKO

Custom dining table

palosamko.com

PARTNERS IN DESIGN

Master bed and headboard

partnersindesignltd.com

SKLO STUDIO

Kitchen island pendants

sklo.com

STELLAR WORKS

Leather dining chairs

stellarworks.com

ZIMMER + ROHDE

Family room drapery fabric

zimmer-rohde.com

time





HIGHLIGHTING SHADES
OF GREEN, BLUE AND YELLOW,
ROBIN CANNON INSTILLS A
FAMILY HOME WITH AN UPBEAT,
UNIFIED ATMOSPHERE.

*By Jaci Conry // Photographed by Michael J. Lee
Styled by Karin Lindbeck Brent*

COLOURS

The homeowners wanted to keep the existing drapes in the dining room, so Cannon paired the Lee Jofa ikat print fabric with a graphic Steven King rug and Phillip Jeffries wallpaper.



From left: The kitchen backsplash is made of Carrara mosaic tile; the family room drapes feature a Lee Jofa fabric with shades of green and blue; in the foyer, vivid vintage blue lamps were found on 1stdibs.com.



“When you have an entire box of crayons to chose from, why would you just pick one color to use?”

ponders interior designer Robin Gannon. “When you walk into a house with color, you know that the people who live there are happy, that they know how to have fun.”

This lighthearted approach to design is what drew the homeowners of this Concord residence to Gannon, lured by the bright, joyful spaces she’s created. “The family had lived in the home for about five years and they loved their house,” says Gannon of the gracious Shingle Style. But it was time to infuse the interiors with a fresh appeal.

“It was very traditional inside. The family room was red, white and blue; there were old-world Oriental rugs throughout the home,” says Gannon. “The husband and wife are very social people and entertain frequently, so it was important the house feel inviting and comfortable with some elements of tradition.”

The wife had two fabrics that she wanted to integrate into the new aesthetic: the dining room’s green ikat Lee Jofa draperies and the yellow and white China Seas window treatments in the kitchen. “Before, each room was an island with its own color scheme,” says Gannon, whose goal was to bring shades of green and yellow, along with blue, into all of the spaces on the main level. “You have to make sure all of the rooms look like they belong together under the same roof.”

In the family room, Gannon incorporated draperies and other textiles with hints of yellow, blue and beige and had the walls

sheathed in grass cloth that is carried into the adjacent kitchen to unify the two spaces. In the kitchen eating area, a robin’s-egg blue pendant provides a pop of color, while the landscape painting above a green dresser—topped with yellow lamps—also incorporates green and blue tones. “I tend to like more subtle ties,” says Gannon. “It’s more interesting that way.”

Multiple seating areas break up the long, front-to-back living room. A tufted green velvet banquette nestled under windows overlooking the verdant yard feels timeless with a bit of modern flair. Light aqua-painted paneling above the fireplace picks up the similar hue of the Galbraith & Paul wallcovering. In between armchairs upholstered in a citron yellow-toned woven Pierre Frey fabric paired with robin’s-egg blue pillows is a classic-shaped faux tortoiseshell coffee table that provides an interesting textural note that is even more compelling when juxtaposed with the nearby mod Lucite table with rounded edges.

“I use texture and color to create different experiences,” says Gannon. “You set a scene in the living room, but it needs to be different than what you do in the family room. The key is to connect and tie spaces together without repeating the same scheme.”

The pool house needed to feel like it belonged with the rest of the home, so Gannon infused it with lively bursts of lime green and blue, anchoring the space with an indoor-outdoor Dash & Albert rug and a whimsical chandelier that recalls sea glass. “It’s a super-user-friendly, bright and airy place the kids can hang out in,” says Gannon. Like the rest of the house, the space, furnished with a plush sofa and vivid ikat-print chairs, feels fun and comfortable, a place you want to linger. “When you have a house done well, it brings you happiness,” says Gannon. “It’s where you want to be all the time.” ■

Design Details

TYPE

Single-family residence

LOCATION

Concord

INTERIOR DESIGN

Robin Gannon
Interiors & Home
robingannoninteriors.com

LANDSCAPE ARCHITECTURE
Gregory Lombardi Design
lombardidesign.com

Resources

ABNER HENRY

Custom dining room table
abnerhenry.com

BUNNY WILLIAMS HOME
Mirror, hourglass table and lamp in the living room, blue lamp in the family room
bunnywilliamshome.com

DAVID IATESTA

Dining room ceiling light
davidiatesta.com

HICKORY CHAIR

FURNITURE CO.
Dining room chairs
hickorychair.com

LILLIAN AUGUST

Family room sofa
lillianaugust.com

PLEXI-CRAFT

Lucite table in living room
plexi-craft.com

PHILLIP JEFFRIES

Wallpaper in the dining room, family room and kitchen
phillipjeffries.com

RALPH LAUREN HOME

Ceiling light fixture in the living room
ralphlaurenhome.com

STEVEN KING

Dining room rug
skcarpets.com

In the pool house, furnishings are comfortable, durable and cheerful. Opposite page: In the eat-in kitchen, an Urban Electric chandelier in a custom shade of blue draws the eye up, while yellow urns atop a green dresser echo the drapery hue.







"I did not want to lose one ounce of light," Whalen says of the bright and airy living room.



white space

Designer Jackie Whalen's home emphasizes simplicity and elegance while highlighting the structure's rich original architectural detailing.

*By Emma Jackson
Photographed by Michael J. Lee*

Clockwise from top left: Whalen designed the master bathroom with style that nods to the past—the custom bow-front vanity—with the comforts of modern amenities; the dining room, with its antique Federal-style table and slipcovered Parsons chairs, is elegant and timeless; Whalen’s favorite leopard-covered chair was given “a place of honor” in the living room, the most used room in the new home.



A

fter designing homes for other people for 25 years, Jackie Whalen got to be her own client when she transformed her own Back Bay residence. Located in an 1878 brownstone that was developed into condominiums in 1986, Whalen and her husband fell in love with the home’s wonderfully intact architectural details: panel moldings, chair rails, thick trim work and ceiling medallions.

The overall layout of the home, along with plentiful windows and high ceilings, gave Whalen an excellent starting point, yet it needed a refresh to fit all of her family’s needs. “The renovation created the rare opportunity to live

in an intimate historic space with a fresh simplicity,” Whalen says of the three-bedroom residence.

Being her own client was a new challenge for Whalen, but since she had a clear vision of her family’s current lifestyle and aesthetic, she was able to create a space that is functional for them over time. “I love the challenge of creating a home that is a reflection of my client’s personal tastes and lifestyles. Designing and renovating my own home was an opportunity to express my personal design aesthetic and put to use many design ideas I had filed away for my dream home,” Whalen says.

The trick was to conserve the history of the home while refreshing it and making each room fit her family’s needs. The layout stayed



Design Details

TYPE
Condominium

LOCATION
Back Bay

INTERIOR DESIGN
Jackie Whalen
jackiewhaleninteriors.com

BUILDER
Connaughton Construction
connaughtonconstruction.com

Resources

CIRCA LIGHTING
Master bathroom and foyer sconces
circa Lighting.com

COWTAN & TOUT
Fabric for master bedroom drapery panels
cowtan.com

CUMAR
Kitchen counter slab and fabrication
cumar.com

DISCOVER TILE
Floor and wall tiles in master bathroom
discovertile.com

KIDDER BLAISDELL

WOODWORKS
Custom kitchen and bathroom cabinetry
kidderblaisdell.com

THE PORTLAND GROUP
Fixtures and tub in master bathroom
theportlandgroup.com

RAYBERN COMPANY OF MASSACHUSETTS
Cabinet and door hardware
raybernhardware.com

STARK
Master bedroom carpet
starkcarpet.com

WATERWORKS
Kitchen and master bathroom sinks
waterworks.com

mostly intact, aside from relocating a coat closet to add space to the kitchen and the addition of a hallway to give her children's bedrooms privacy and access to the second full bathroom.

In the kitchen, Whalen designed creamy white cabinetry with raised and flat panel doors and smaller-scale trim pieces and dentil crown moldings, while instilling a sense of the home's origins by using honed white stone with gray veining in the countertops and backsplashes. Every square inch of space is in use, like the columns that serve as decoration in addition to storing spices, condiments and utensils, and shelves above the sink display amethyst and clear cut-crystal glasses.

The mostly white palette of the home gives it the classic, light and serene feel that Whalen had in mind, and hints of gold act as a common thread connecting her favorite pieces from her previous home—like the leopard-covered French accent chair and green velvet bergeres in the living room—to their new home and the views outside. “The gold looks great with the leafy green treetops when the trees bloom, and when the leaves dropped [in winter] the gold warms up in the sun,” says Whalen.

In the master bathroom, the dropped ceiling was removed to restore its original 11-foot height. The suite's bathroom was fitted with a custom vanity and an antique Venetian mirror; after doing away with the small enclosed shower, a free-standing double-ended tub now overlooks the beautiful tree-lined Commonwealth Avenue Mall and the city skyline. ■



From top: The master bedroom's vintage vanity table and chair are set in front of large windows overlooking the trees; built-in open shelving was added to create more storage space; the geometric mosaic backsplash is made of small pieces of marble put together and is framed with a raised panel arch.



G R E E N W I T H

E N V

*AIRY, INNOVATIVE AND UTTERLY ONE OF
A KIND, THESE INSPIRATIONAL ALFRESCO
SPACES MAKE OUTDOOR LIVING
APPEALING MORNING, NOON AND NIGHT.*

BY JACI CONRY

Y

A pool situated off the guest house is oriented toward the harbor and the main house.



COASTAL COHESION

Two structures are connected by lush, interlocking entertaining spaces with abundant opportunities to absorb the ocean view.

THE CONCEPT When the homeowners purchased this plot on Nantucket, it was two separate parcels, each featuring its own small residence. Poorly constructed and damaged, the original structures were replaced with two new houses tailored to the owners' specific needs. The four-bedroom main residence is located directly on the beach, while the second, five-bedroom guesthouse is on the street level. Each structure has direct access to a multifaceted outdoor space that includes a pool, a dining area and several distinct seating areas.

THE MATERIALS Both the main house and guesthouse are covered in traditional white cedar shingles with a red cedar shingle roof. Bluestone pavers, solid cedar pergolas and ipe wood decking round out the exterior of the home.

THE CHALLENGE Unifying the significantly varied

elevations of the property's two structures was tricky; connection was achieved by landscaping paths and a winding driveway that goes from one end of the compound to the other. Additionally, due to the lower main house's beachfront location and new FEMA rules, the structure was required to be raised significantly. The team wanted to make sure it was nestled into the landscape and designed a series of decks and pavilions as well as planters to bring the landscape up near the edge of the home.

THE TEAM Architecture & Design: Workshop/APD, workshopapd.com; Landscape Designer: Miroslava Ahern Landscape Design Studio, ahernllc.com; General Contractor: Reid Builders, reidnantucket.com; Structural Engineer: CRAFT Engineering Studio, craftengin.com

Pergolas from each end of the house ensure that there is constant shade, so the landscape may be enjoyed on even the hottest summer days.

INSIDE THE BOX

A mod multilevel, open-air outbuilding provides abundant architectural interest and area for a slew of activities.

THE CONCEPT The owners of a Dutch Colonial Revival residence in Wellesley sought a free-standing garden building that provided a garage workshop to repair antique Vespa scooters, a writer's retreat, an uncovered veranda and a roof deck geared for vegetable gardening and alfresco dining. Flavin Architects' solution was a modern multilevel structure that is an intriguing contrast to the neighborhood's architecture.

THE MATERIALS The lower-level garage workshop is comprised of a concrete box clad in stucco. The two upper floors of the building have an exposed steel-frame structure that is draped with a curtain of slender mahogany wood strips that screen the nearby busy road from the veranda and roof deck.

THE CHALLENGE The homeowners wanted the new building to exist in cohesion with their neighborhood. In deference to the street's predominantly Tudor and Colonial Revival homes, the new structure is located behind and to the side of the main residence. While still being visible from the street, the setback respects the context of traditional houses and the established pattern of accessory garages being located behind the primary dwellings.

THE TEAM Architecture: Flavin Architects, flavinarchitects.com; Landscape Architect: Wagner Hodgson Landscape Architecture, wagnerhodgson.com; General Contractor: Brookes + Hill Custom Builders, brookesandhill.com



From top: The middle floor, set a few steps above the backyard, is an open-air veranda that gets its privacy from the street by a three-level mahogany screen; the lowest level of the structure, set into the sloping site, contains a 670-square-foot garage workshop, where the homeowner repairs antique Vespa scooters.



PHOTOS BY PETER VANDERWALKER



The roof deck encompasses an expansive dining area and container vegetable gardens. The appearance of the building changes throughout the day: The wood screens are back-lit in the morning sun and front-lit in the afternoon.



A Japanese maple tree shades a stone and stainless-steel outdoor kitchen. A bluestone terrace, geometrically intertwined—as if woven—with the grass on two sides, and surrounding a wood-burning fire pit, is just off the barn.



From top: The main house, an older Cape with a contemporary addition, is located across the field; a bocce court is shrouded by the site's plentiful mature trees.

SOCIAL SPHERE

A new barn geared for guests and entertaining is integrated with the verdant landscape to accommodate endless outdoor pursuits.

THE CONCEPT For the outdoor area around the barn, the goal was to extend the interior entertainment spaces. A built-in grill and fire pit were created on one side of the structure, and a bocce court was installed on the other. A cutting vegetable garden with fruit trees and a storage shed were also incorporated into the landscape. The expansive lawn acts as a connector between the barn and the main house with paving patterns, plantings, fencing and lighting to delineate and separate each outdoor space while also providing continuity.

THE MATERIALS The barn sits on a plinth of bluestone and cedar. Terraces and walkways are made of bluestone. Big steel

doors and glass panels in the barn allow light and interaction to flow—interior to green space to interior again.

THE CHALLENGE It was important that the secondary barn structure didn't overpower the guesthouse. This was achieved by orienting the long dimension of the barn perpendicular to the guesthouse and utilizing a sweeping shallow-pitch roof to allow the barn to appear to hug the ground. The barn also utilizes the lower grade at the rear of the property to reinforce its place in the overall site hierarchy.

THE TEAM Architect, Builder & Landscape Architect: Polhemus Savery DaSilva Architects Builders, psdab.com ■

T
H
E
C
O
M
M
I
T
T
E
E

WE'RE PLEASED TO INTRODUCE THE TOP TASTEMAKERS WHO
KEEP BOSTON LOOKING SO GOOD. THESE STYLESETTERS
REPRESENT THE BEST IN THEIR INDUSTRY, AND WE ARE
HONORED TO WELCOME THEM AS PART OF OUR *MODERN
LUXURY INTERIORS BOSTON COMMITTEE.*

B Y T H E E D I T O R S

RACHEL REIDER

PRINCIPAL, RACHEL REIDER INTERIORS



Rachel Reider, who helms Rachel Reider Interiors (rachelreider.com), is known for her residential work and hotel designs.

What first sparked your interest in interiors or design? I was traveling in Thailand and was mesmerized by the textures and colors of the silk. There it dawned on me that I could take something that has always been a passion and turn it into a career.

Who are some of your favorite 'secret' sources for projects? We love to discover new and upcoming artists and artisans. They typically are really excited to collaborate, offer a unique point of view, and clients always like a good story behind a piece.

What is your favorite color palette to use in projects currently? I personally gravitate

toward jewel tones. There is a richness and warmth that really resonates, as well as being a classic palette that can span different styles from traditional to modern.

What is a design trend that you are so over? I'm completely over accent walls. Either commit to a bold color or wallpaper and go all in or don't do it at all. While it can be a good tool for calling out a special area because it directs your eye there first, I prefer to take in the whole space and let your eye travel around the room as a whole.

How do you weave your sense of style into everything you do? Our design approach focuses on creating

layers for added depth and interest, which really extends into how I approach many aspects of my life. Certainly fashion, and I would say cooking as well. It's never just about one piece but more what you pair with it that adds interest.

What is a design trend you are loving at the moment? I love that people are really embracing bold color at the moment. It's not for everyone, but I find the more that people see color being used in magazines and showrooms, their interest is piqued and their comfort level rises. I try to avoid trends as by the time it's seen as a trend, I'm usually over it and on to the next thing, but the use of color in design is timeless.

E L I Z A B E T H
G E O R G A N T A S

PRINCIPAL, GEORGANTAS DESIGN + DEVELOPMENT



Elizabeth Georgantas and her husband, Peter, are the founders of one of the city's top firms: Georgantas Design + Development (livegeorgantas.com).

What is a design trend you are loving at the moment?

Scandinavian mixed with contemporary.

How do you weave your sense of style into everything you do (fashion, etc.)?

Eclectic: always a mix. Old, new, high, low. Just this weekend I wore a piece I purchased my freshman year of college, mixed with

the latest off of Etro's fall runway collection.

Wallpaper or paint? Easy.

Wallpaper makes everything better.

Antique or reproduction?

Sometimes only the real deal will do. Sometimes a well-placed, well-purchased reproduction is a great way to get the look without spending the money.

What is your favorite color palette to use in projects currently?

Tan, black, white and gold.

What is a timeless design moment that you think will never go out of style?

A well-placed hallway mirror, preferably above a table or on a ledge, and even better if you can get a small bench under it.

What first sparked your interest in interior design? A childhood friend lived in a home with an interior that was nothing like anything I'd ever seen. It was eye-opening to me that people actually lived like that. I wanted to be at that house, surrounded by all those beautiful things, all the time... I didn't understand it then, but as I grew up, I realized what it was all about: Your environment has a direct effect on how feel, think and perceive the rest of the world.

What is a design trend you are loving at the moment? Zellige tiles along with screens and room dividers in myriad materials.

What is a design trend that you are so over? Maximalism, because, quite frankly, there is a point when enough is enough!

How would you describe your aesthetic? My personal sense of aesthetic, from fashion to interiors, is 'casual masculine with an edge.'

What is the best bang for the buck when it comes to making a big impact on a project? An abundance of natural light and amazing light fixtures.

What do you wish your clients understood? That it takes time to create a truly unique interior space—from concept to drawings, through construction and, finally, to furnishings.



M I C H A E L
F E R Z O C O
P R I N C I P A L , E L E V E N I N T E R I O R S

Michael Ferzoco's Eleven Interiors (eleveninteriors.com) tackles residential projects of all size and scale.



What first sparked your interest in design? I grew up in a family of artists and designers. My uncle is a sculptor, and my father is an architect and has his fellowship with AIA. I feel as though I was born into it.

How would you describe your aesthetic? Clean, personal, modern but livable.

What is a design trend you are loving at the moment? Plants! I am so in love with the introduction of more greenery in spaces.

How do you weave your sense of style into everything you do? My personal sense of style is typically monochromatic, and I love a good accent piece (e.g., a chunky bracelet or large earrings). I also love texture. This is very apparent in my design aesthetic as well.

What is a timeless design moment that you think will never go out of style? Midcentury modern lighting fixtures.

What is your favorite color palette to use in projects currently? Mildly off-white with black accents.

T A N I Y A
N A Y A K

PRINCIPAL, TANIYA
NAYAK DESIGN

Taniya Nayak's Boston firm, Taniya Nayak Design (taniyanayak.com) specializes in residential and restaurant interiors.

L I Z
C A A N
PRINCIPAL, LIZ
CAAN & CO.



Liz Caan's studio, Liz Caan & Co., (lizcaan.com) is based in Newton.

How would you describe your aesthetic? Perfectly imperfect, curious, layered and a little tongue-in-cheek. I wouldn't describe it as overly serious, but it's anchored with some good classics and a bit of patina.

Antique or reproduction? Antique; one cannot re-create the timeworn patina, the story and the imperfections of a true original.

How do you weave your sense of style into everything

you do? I find that I assemble an outfit the same way I would assemble a vignette or a room by mixing and layering colors, patterns and materials. I also love creating a table setting to fit my mood and the occasion, even if that occasion is a low-key Wednesday night dinner in the kitchen. For me, the joy is in the details.

What is a design trend you are loving at the moment? Granny chic! Who can resist a

room enveloped in the same fabric everywhere?

What is a design trend that you are so over? Transitional. It's like the boring person at the dinner party.

What is the best bang for the buck when it comes to making a big impact on a project? Wallpaper is extremely impactful. It can literally transform a space, hide flaws and add 'implied' architectural detail, texture, etc. ■



 tastic Renovated Spaces



 tastic Genuine Service



 tastic New Cuisine



 tastic Mindful Meetings

Celebrations and Events at Mandarin Oriental, Boston.
Experience our newly renovated event facilities and delicious new catering menus.
Distinctive. Stylish. Enchanting. *Memorable.*



EXPLORE

A rendering of a penthouse's main living area with a sweeping view of Diamond Head and the ocean

PARADISE, FOUND In addition to spectacular views and striking interiors, **The Residences at Mandarin Oriental, Honolulu** just upped the luxury game, announcing the kitchens and baths in its homes (planned for 2022) will be custom made by Italian design firm Molteni&C. “If you think of fashion houses, you think of Dior or Chanel,” says the building’s interior architect Dianna Wong. “In the same way, when one thinks of high-end Italian design, Molteni&C represents the evolution of global design, bringing a form of high-fashion couture to interior design.” Indeed, the look of the whole building is elevated and sophisticated—think Balenciaga, not Birkenstock. “Because this development is not at the ocean’s edge but offers an elevated, urbanized perspective of Hawaii with panoramic ocean views, we created a refined interplay with contrasts: dark woods against white marbles, jewel tones and dark stones with white veins,” Wong says. In addition to the gorgeous units, residents will have exclusive access to a private amenity level with a pool, a spa, outdoor lounge space and even a karaoke room. Plus, they’ll have access to the hotel’s amenities including the planned 20,000-square-foot signature Mandarin Oriental Spa. And for nights when even that chef’s kitchen isn’t incentive enough to leave the beach, there will be an exclusive residents-only Michelin-starred chef restaurant just an elevator ride away. *Condos from \$3.5 million, moresidenceshonolulu.com—Laura Hine*

Hotel Fasano Punta del Este is an escape in every sense.

UNWINDING IN URUGUAY

When tasked with where to spend two blissful weeks of R&R, the answer is unequivocal: Uruguay.

By Lauren Finney Harden

While Uruguay might seem like an uncommon vacation destination, the South American country situated between Argentina and Brazil has long been a recognized hot spot to those in the know. And while Punta del Este is perhaps Uruguay's most famous locale, the city is notoriously seasonal and, therefore, largely neglected most of the year.

East of Punta del Este, however, is a region called La Barra, and beyond it, about 20 minutes or so, is José Ignacio, the bohemian fishing village where it seems every supermodel and billionaire is flocking thanks to its similarities to Montauk. For our sojourn, my husband and I specifically choose La Barra because of its convenient positioning between Punta del Este proper and José Ignacio. After planes, trains, automobiles and ferries—we're

just short a scooter ride—we arrive. Our destination of choice, about 15 minutes northeast of the city: Hotel Fasano Punta del Este.

If you're familiar with the Fasano in Sao Paulo or Rio de Janeiro, then you'll know the brand's seductive elegance. Fasano Punta del Este varies slightly (it was an acquired property) and is the first outside Brazil. With 30 rooms in total, you'll want to book one of the modern concrete



Tips for Navigating Luxury Travel's Next "It" Destination

GETTING THERE

Fly into Buenos Aires, then take the ferry or a connecting flight to Punta del Este. From there, it's a 45-minute drive to Hotel Fasano Punta del Este.

MONEY, MONEY, MONEY

A happy surprise: Uruguay (turismo.gub.uy) gives back 22% on all retail, car rentals and restaurant purchases, and the value-added tax is waived at hotels. It's a completely valid excuse to buy even more soft handmade sweaters at Manos del Uruguay (manosyarns.com).

GORGEOUS GARZÓN

A tiny town east of Punta del Este, Garzón is quietly making its mark on the international scene. Lord of South American dining Francis Mallmann bought much of the map dot to support his Restaurant Garzón (restaurantgarzon.com), a can't-miss reservation for any foodie traveler. A sheep trotting across the street is what greets us when we pull up the dusty, unpaved road—to give you an indication of how quaint and removed the town is. Wines at Restaurant Garzón, and throughout the country including at Fasano, often come from Bodega Garzón (bodegagarzon.com), another modern architectural temple and only a 30-minute ride away. The wines are often lauded as some of the best, with *Wine Enthusiast* naming it best new world winery of the year in 2018. Don't sleep on its bold, robust tannat or the spicy olive oil made on-site.

experience, especially in a part of the world that isn't saturated with information.

Act quickly, though. This past January (high season is mid-December to mid-January), many international hoteliers, models and New Yorkers about town were already flocking to the area. It's only a matter of time before the secret of La Barra and Fasano Punta del Este is out. *Rooms from \$570 per night, lhw.com/fasanopuntaeste* ■



Bodega Garzón produces some of the most unique wines in the world.

bungalows that sit sentry toward sunset. Following the acquisition, the surrounding area was incorporated into Fasano Las Piedras, a nature reserve offering everything from picnics to golf to horseback riding. (An expansion and new modern building, Locanda Fasano, was designed by Brazilian architect and Punta del Este resident Carolina Proto.) Glass walls the entire length of hallways nearly shock you into accepting the beauty of the surrounding nature; the library, pool, restaurant and assorted small rooms in Locanda are impeccably designed, as is the spa, which is a collaboration with renowned spa consultant Renata de Abreu.

It all seems otherworldly (and that's before the sun sets and the subsequent starry sky appears). With so few rooms, the place can almost feel deserted, but in a good way—like you have it all to yourself. Staff is extremely

attentive, and the rooms are outfitted with free-standing tubs, modern sound systems, premium linens and painstakingly sourced antiques so no two rooms are exactly alike. The formal dining option, Restaurant Fasano, along with other parts of the property, was designed by Brazilian architect Isay Weinfeld and serves Italian fare in a traditional yet modern Uruguayan setting. Las Piedras is the more casual breakfast restaurant housed in the property's original hacienda.

As a member of The Leading Hotels of the World, Fasano Punta del Este is counted among some 400 of the world's best properties. (Carillon Miami Wellness Resort; Ritz Paris, which is also highlighted in this issue; and Grace Bay Club in Turks and Caicos are all members.) My advice: A member of The Leading Hotels of the World is the shortest distance between a tasteful, elegant hotel and an anxiety-free

PARIS, JE T'AIME

Air France and the Ritz Paris deliver an ultimate getaway to the City of Light.

By Anetta Nowosielska

Novelist Marcel Proust said it best: “The real voyage of discovery consists not in seeking new lands, but seeing with new eyes.” This couldn’t be more true for Air France’s La Première first-class service and the recently renovated Ritz Paris, a historic five-star hotel located at Place Vendôme. On their own, these beloved beacons of French savoir-faire offer a conduit to a world of beauty and style. Together they up the ante on redefining how to experience the best of Paris.

Air France’s lavish, over-the-top La Première program—available to elite travelers regardless of hotel accommodations—sets a precedent for an unrivaled arrival. It not only stands out for its exclusivity but also comes with unmatched comfort and amenities. An airline-dispatched car service handles door-to-door transfers while a concierge agent waiting at the gate manages luggage and expedites check-in and immigration, skirting lines. Service on board celebrates French culinary excellence and stylish provenance.

La Première’s elegant efficacy is a telling prelude to what awaits at the Ritz Paris. Just three years after massive renovations, the hotel has struck a balance between its dedication to tradition and art de vivre while thrusting the property toward modernity and function. The improvements are evident, yet nothing seems extraordinarily different, extending the joy of discovery to those versed in luxury’s refined nuances.

Post renovations, which kept the hotel shut for nearly four years, Ritz Paris still celebrates traditional 18th century French decor and the ethos of fine dining. The approach, however, is lighter and less precious. There are more windows and higher ceilings that benefit from the light-flooded effect. The brighter and larger rooms are still decorated with Empire-style furniture and rich fabrics. The bathrooms retain plenty of original features, such as gold swan taps, peach bath linens and deep bathtubs, rumored to have been enlarged thanks to the corpulent King Edward VII, who got stuck soaking in one while enjoying the company of a lady who was not his wife.

In other epicurean delights, Bar Vendôme begs a visit not only for its fare, but also for a framed photo

A look at
the hotel’s
lobby
corridor





Clockwise from left: The white marble staircase features gilded details and crystal chandeliers; the Windsor Suite is a study in French-style opulence and refinement; the Imperial Suite is listed as a national monument of France.

On Board

THE SERVICE La Première (tickets price upon request, airfrance.com) passengers are treated to VIP curbside service at Charles de Gaulle Airport (level of services at destination airports varies) and are escorted through expedited security before being whisked by a concierge agent to a lounge that features offerings from Alain Ducasse and an opulent Biologique Recherche spa.

THE EXPERIENCE La Première's private suites, laid out in a single row of four seats, emanate sophistication and flair in an ideal ambiance for rest and relaxation. The comfortable seats transform into beds and, upon request, are outfitted with a memory foam mattress, pillow and large duvet. From the individual lamp at every seat to the floor-to-ceiling curtains, La Première is a study in function and style.

THE MEALS The gourmet menus on some of the flights include recipes from Michel Roth, Régis Marcon and Emmanuel Renaut. These creations are served on Bernardaud porcelain with beveled Christofle glasses and flatware to boot. Meals are accompanied with wine and Champagne curated by leading experts.



gallery of all the greats who have visited. For a gourmand experience, Nicolas Sale's menus—served in the one-Michelin-starred atrium Les Jardins de L'Espadon or his two-Michelin-starred La Table de L'Espadon—are the stuff of legend. Those feeling inspired can book culinary classes in on-site cookery school École Ritz Escoffier.

Edward VII aside, royalty isn't the only cast that left a mark here. The creative set, which included Proust, Ernest Hemingway and Coco Chanel (who lived here for over three decades and eventually died in her suite), continues to breathe life into the property. The world's first and only Chanel Spa is a stunning celebration of the designer, executed in Coco's favorite color combo of white, beige and black.

Salon Proust, located near the main lobby, is home of Thé à la Française helmed by chef François Perret, who raises the ceremonial tradition to new heights of refinement. The tea offerings, curated by a sommelier, are vast and varied, but those looking to make this a proper French experience should pair their confections with a glass of Barons de Rothschild reserve brut Champagne.

Located at the very end of a shopping gallery, Bar Hemingway is a small and fabled institution that used to be ladies-only. Ironically, today it is the cultish bastion of masculine worship run by Colin Field, thrice voted best bartender in the world. Here this lively magician

is equal parts barman, storyteller and custodian of Hemingway's spirit, who was not only a fixture, but during World War II was rumored to have co-liberated it from the Germans with the help of American soldiers.

One lasting impression comes thanks to the no check-in or checkout time policy. And that poignantly may be the hardest thing to do here. Even with Air France's outstanding La Première service to soften the blow, parting the Ritz Paris is truly such sweet sorrow. *Superior rooms from \$1,090 per night, Prestige Suite from \$3,270 per night, ritzparis.com* ■



CASA DE SUS SUEÑOS

Sometimes all you need is a tropical escape to recharge. But, let's face it, most of the time a more permanent fix is in order. Here is a Los Cabos, Mexico, residential community that can turn vacation mode into everyday mode.

By Ela Sathern

A luxury ride takes me along the scenic Corredor de Oro, the highway that connects Cabo San Lucas to San José del Cabo, to visit the Twin Dolphin (twindolphinloscabos.com) residential community, where I'm greeted by a delightful staff that instantly feels like old neighbors welcoming me back home.

Formerly the site of the Hotel Twin Dolphin, this exclusive 1,400-acre community along the waters of the Sea of Cortez is home to Montage Los Cabos Resort and Residences; a Fred Couples Signature golf course; and Maravilla Los Cabos, a private residential community and club. As I soak in the gorgeous views, I'm delighted to see how the owner-developer of Twin Dolphin, Ohana Real Estate Investors, honored the land's beauty, blending with the natural landscape, preserving views and maintaining open spaces. From custom homesites and beachfront villas to completed villas and town homes, this magical spot in Mexico is cradled by two (of only a very few) pristine, year-round swimmable beaches in Los Cabos—Santa María Bay and Las Viudas Beach—where snorkeling and diving are among the best in the area.

Anticipating the needs of all generations, there is something for everyone in the family to enjoy—and only steps from your dream home away from home.

Soak in the beauty of Maravilla Los Cabos' main pool.





Maravilla Los Cabos

Embrace indoor-outdoor living with ocean-view terraces at this private residential community that spans 260 oceanfront acres. With more than 15 years of combined project management expertise in Los Cabos, the design services team can make your second home your own (from \$3 million). The heart of the Maravilla community, though, is the all-inclusive, members-only access to The Club, a 60,000-square-foot stone clubhouse. Family time abounds with options from swimming at the three-level infinity pool to lunch in the newly renovated Papolote with arcade and DJ booth to movie night in Los Cabos' only THX-certified theater. Other amenities of note include Mundo Mavi kids club; The Park, which includes a jungle gym and multisports fields; an 18-hole putting course; a fitness center; and a spa, featuring exclusive 150-minute treatment Sea of Wave Ritual. Or head to the members-only Santa Maria Beach Club and pick up a paddleboard or underwater scooter, or simply relax on a beachfront recliner. Finish the day with dinner under the moonlight at oceanside Ecco, where fresh fish is caught daily and the finest prime cuts are a delight.



Twin Dolphin Club

Homeowners may join the Twin Dolphin Club across the *arroyo*. Golf enthusiasts will not only appreciate the 18 holes of competition for all levels at the Twin Dolphin Fred Couples Signature golf course (\$75,000 initiation fee, \$20,000 annual dues), but also the opportunity for the entire family to enjoy the links. Cabanas are set for children to play video games as you practice your swing, and two Red Doors (on-course amenities) are ready to be spotted—one at the fifth hole offering a fully stocked kitchen and one at the 12th hole featuring a palapa bar and grill with spectacular views. Behind the golf course's desert landscape, find another day's entertainment: a private campsite (think glamping!) with paintball, archery and ax-throwing courses, hiking and mountain biking trails, and more.



Montage Los Cabos

If you're looking for move-in ready, Montage Los Cabos' 52 two- and three-bedroom turnkey residences come fully furnished (from \$1.75 million). While embracing the resort amenities—a 20,000-square-foot multilevel pool; a luxurious 40,000-square-foot Spa Montage with jetted hot and cold plunge pools; fitness facilities; and Montage's signature, immersive children's program, Paintbox—residents also enjoy a private pool and playground, and an optional rental program through the resort. Gaze at the panoramic view of the bay from the edge of the infinity pool: It's the perfect location to unwind with the beach below and beachfront Marea restaurant at right. ■

HOUSE PARTY BOSTON

mandarin oriental chinese lunar new year celebration



Janet Wu, Madeleine Capino, Jenny Fitzsimmons and Lee Meynard



Merrill Robichaud and Tori Folk

ASIAN AFFAIR

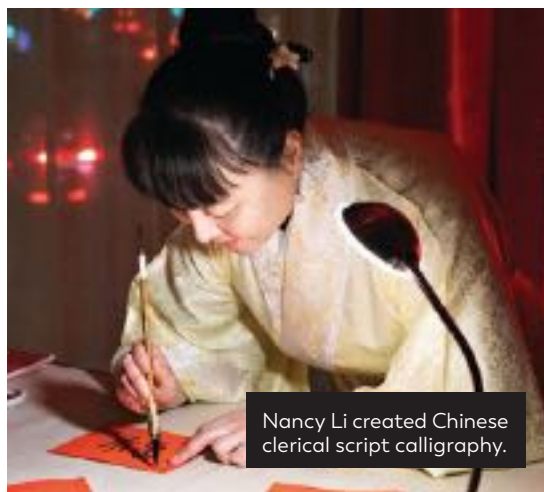
THE PARTY Mandarin Oriental, Boston's **Year of the Rat** celebration also served as the unveiling of the hotel's renovated event facilities.

THE SCENE The evening featured a traditional *lai see* (fortune) tree with envelopes filled with surprises including an overnight stay, personalized Chinese clerical script calligraphy and Asian-inspired food.

THE PERKS A lively lion dance was a highlight of the night; it has been part of Chinese culture for thousands of years and is performed to chase away evil spirits and bring happiness, longevity and good luck. —*Jaci Conry*



Michael Carucci and Dr. Marisela Marrero



Nancy Li created Chinese clerical script calligraphy.



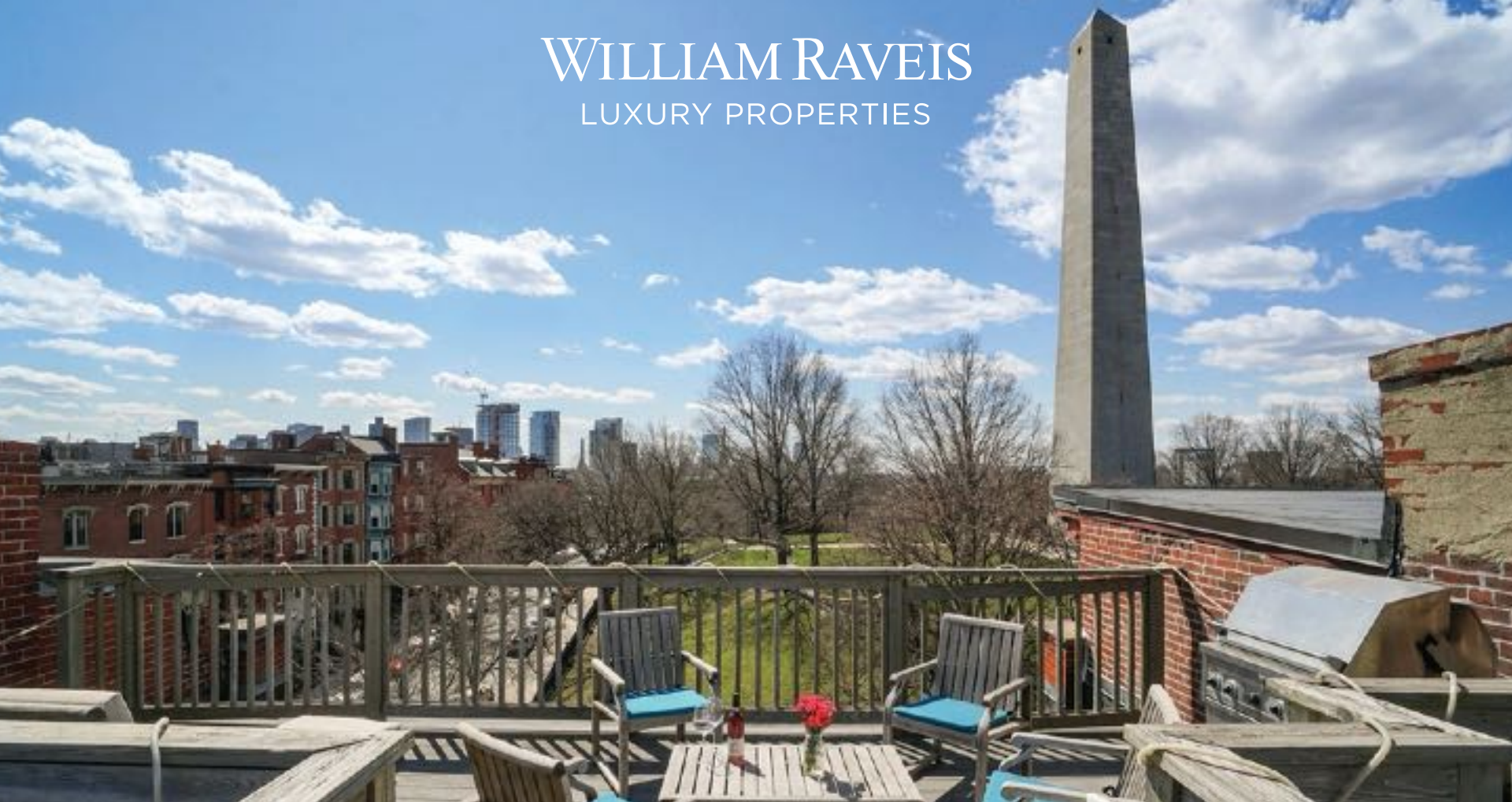
Ken Ng and Gene Hartigan



Philipp Knuepfer, Laura Baldini and Jack Yeaton

WILLIAM RAVEIS

LUXURY PROPERTIES



16 MONUMENT SQUARE #5, CHARLESTOWN | \$1,100,000
Penthouse 3 bedroom with private roof deck and parking.



REGINA WINSLOW
LUXURY PROPERTIES

WILLIAM RAVEIS TOP PRODUCING SALES ASSOCIATE
#9 IN MASSACHUSETTS + #20 COMPANY WIDE

BOSTON + CHATHAM

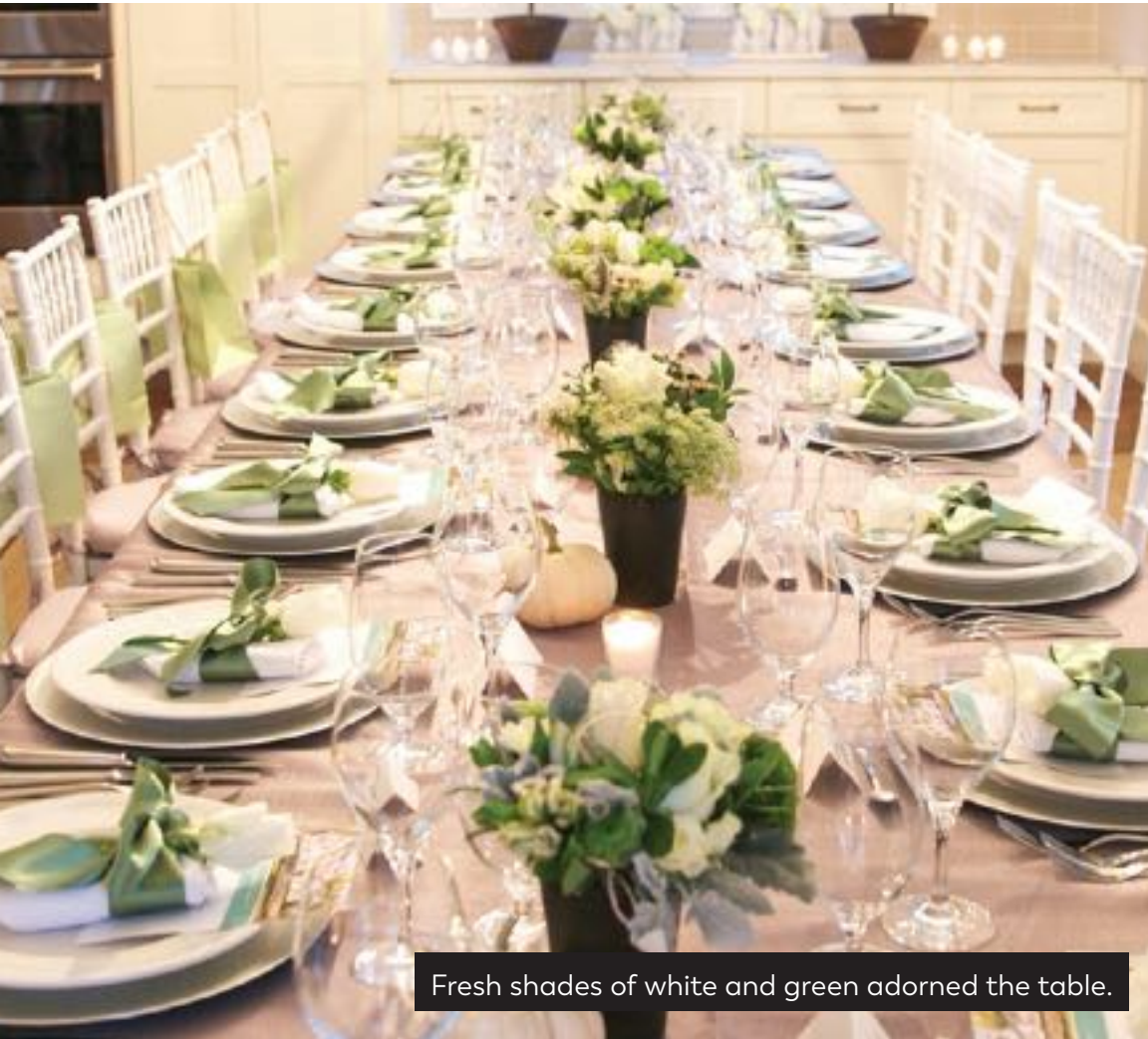
C 617.429.3041 | REGINA.WINSLOW@RAVEIS.COM

O 617.266.5200 | 18 ARLINGTON ST | BOSTON | MA 02116 | O 508.945.7777 | 37 CROSS ST | CHATHAM | MA 02633

REGINAWINSLOW.RAVEIS.COM

HOUSE PARTY BOSTON

fine boston living dinner



Fresh shades of white and green adorned the table.



Local produce was used for the meal.



Francesca Purcell, Ashley Bernon and Shannon Pastuszak



Michael Lord and Amy Lestage-Lord



Antonio Sgro, Elizabeth Crampton and Kinda Touma

DINING BY DESIGN

THE PARTY Elizabeth Crampton of Fine Boston Living & Coldwell Banker Realty hosted a **private exclusive dinner** at her listing 30 Oakmount Circle in Lexington, a stunning new contemporary farmhouse by Copley Development.

THE SCENE Guests dined on an exquisite dinner by *Top Chef's* **Tiffani Faison**, watched the sun set, danced and mingled to a trio of jazz musicians.

THE DAY AFTER Over 300 guests danced the night away at the house to the sounds of DJ **Rich DiMare** and enjoyed signature cocktails by Boston Society Events while taking in both mountain and water views. —JC



Milan and Kimberly Kosanovich

DAVIO'S[®]

NORTHERN ITALIAN STEAKHOUSE

*Private Events, Weddings, Rehearsal Dinners
Engagement Parties, Bridal Showers*



For private dining inquiries at Davio's Seaport call 617.261.4810

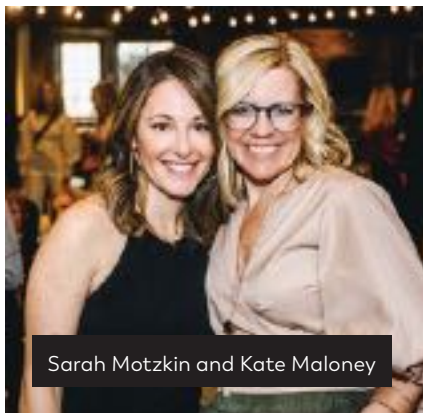
Boston | Foxborough | Chestnut Hill | Lynnfield | Braintree | Logan Airport | Boston Seaport
Philadelphia | King of Prussia | Atlanta | New York City | Irvine

HOUSE PARTY BOSTON

rise + shine marketplace



Caroline Otis



Sarah Motzkin and Kate Maloney



Elisha Alexina pillows



Pottery by Myrth Ceramics



Mattie DiNapoli and Natalie Klee

RISE + SHINE

THE PARTY Interior designer **Kate Maloney** of KMID and **Sarah Motzkin** of Busy Bostonians joined forces to host a curated makers market entitled **Rise + Shine**. This collaboration was not only a modern-day craft fair but a networking event, shopping event and party all wrapped into one.

THE SCENE The talented duo created an experience for their guests that included a walking lunch, mimosa bar and jazz band.

THE PERKS Vendors included Porcelain & Stone, Farm + Sea Candles, Justine Sterling Design, Lekker and Injeanius. —JC



Dane Austin, Annie Damphousse, Jenna Talbott, Justine Sterling, Ana Donohue, Jill Najnigier and Kate Maloney

PHOTOS BY ELLEN SARGENT PHOTOGRAPHY

BOSTON ARCHITECTURAL COLLEGE

SINCE 1889

#InThisTogether

The BAC Spring Gala has a new date: Wednesday, June 10, The Boston Design Center. We are optimistic and excited to celebrate together after this period of social distancing.

For 130 years, the BAC has educated generations of socially conscious architects, designers and makers. We are proud to provide world-class, practice-integrated design education to students around the globe.

Help continue our vital mission of providing excellence in education by contributing to our biggest fundraiser of the year, the BAC's Spring Gala.

Even if you can't attend, please make a gift at **the-bac.edu**. Funds support our students' education and our mission of diversifying the design professions.



sonja selami real estate panel and slocum hall open house



Sonja Selami and Ashley Bernon

OPEN FORUM

THE PARTY The Law Offices of Sonja Selami hosted a **real estate panel discussion** for the Wellesley Weston Compass brokerage teams.

THE SCENE Panel guests included Deputy **Christopher Cunningham** from the Wellesley Police Department, interior designer **Maura O'Malley**, premier photographer **Cheryl Richards** and image specialist **Danielle Austin**.

THE PERKS Guests were served comfort food dishes from Legal Seafood, including the restaurant's award-winning clam chowder, a mashed potato bar and an endless selection of sushi. *-JC*



Erjon Duraj and Holta Zaccaj



Realtors from various offices were in attendance.



Marc Kaplan, Gregory Lombardi, Eleni Kaplan and David Boronkay

OFFICE SPACE

THE PARTY Slocum Hall Design Group welcomed guests to help celebrate the **opening of its new offices** in Watertown.

THE SCENE Guests toured the new space, networked with the Slocum Hall Design Group team and mingled with top industry professionals.

THE PERKS The lively celebration featured a craft beer and wine tasting, along with light bites and networking. *-JC*



Jon Fox and Vani Sayeed



Sarah Lawson and Peter Grover

REAL ESTATE PANEL: PHOTOS BY CHERYL RICHARDS; SLOCUM HALL PARTY: PHOTOS BY KATHRYN RILEY

The Nantucket Historical Association
presents

nantucket by design

save the dates: **July 30 – August 1, 2020**

presenting sponsor

WILLIAM RAVEIS
NANTUCKET
REAL ESTATE • MORTGAGE • INSURANCE

media sponsor

MODERN LUXURY
Interiors
BOSTON



Meg Braff



Alessandra Branca



Ellen Fisher



Young Huh



Richard Keith Langham



Steele Marcoux



Thomas Woltz

Follow us @NantucketbyDesign #NANTUCKETBYDESIGN

PROMOTION

A LOOK INSIDE LUXURY

MLBOSTONCOMMON.COM



MODERN LUXURY
BOSTON COMMON

IG @BOSTONCOMMAG

PHOTOGRAPHY BY: DANNY CARDOZO

MODERN LUXURY

Interiors

BOSTON

PHOTOGRAPHY BY MICHAEL J. LEE. DESIGNER: LAURA BARLETTA

BOSTON'S PREMIER
LUXURY HOME AND
DESIGN LIFESTYLE
PUBLICATION

MODERN LUXURY INTERIORS BOSTON 2020 ISSUES

VOLUME 1 | VOLUME 2 | VOLUME 3 | VOLUME 4

FOR ADVERTISING AND PROMOTIONS CONTACT PUBLISHER
SHANNON PASTUSZAK AT SPASTUSZAK@MODERNLUXURY.COM

MODERN LUXURY MARKETPLACE

HOME DESIGN

ARCHITECTS

CAMBRIDGE SEVEN ASSOCIATES

Cambridge Seven Associates, Inc. was founded in 1962 by a group of seven designers with varied interests and backgrounds who believed their collaborative efforts would be far more effective than those of any individual. The firm has applied this approach to a diverse range of building types including academic, museum, exhibit, hospitality, transportation, retail, office, and aquarium facilities. 1050 Massachusetts Ave. 617.492.7000 or www.cambridgeseven.com

CURL SIMITIS ARCHITECTURE + DESIGN

With a deep appreciation for New England's long traditional of contemporary design, Curl Simitis work is unapologetically eclectic. The firm strives to express the personality and character of their clients through its work, collaborating with them to create spaces that are comfortably contemporary. 533 Main St. or www.cs-ad.com

ECK MACNEELY ARCHITECTS INCE

One of the city's esteemed firms, Eck MacNeely has been in practice since 1976. The firm, known for its attention to detail, designs residential projects, commercial buildings and campus housing and also has an interior design component. 560 Harrison Ave. 617.367.9696 or www.eckmacneely.com

HUTKER ARCHITECTS

For three decades, the team at Hutker Architects has worked with families and individuals to create one-of-a-kind homes in New England. The firm offers both architecture and interior design services and engages in a collaborative process to create a program of indoor and outdoor spaces that best supports the way clients live, work and play. 533 Palmer Ave. 508.540.0048 or www.hutkerarchitects.com

LDA ARCHITECTURE & INTERIORS

For nearly 25 years, LDA has provided design solutions for a wide range of clients throughout New England. LDA focuses on sustainable architecture and interior design for both residential and commercial new builds and renovations of all scope and size categories. 222 Third St. or 617.621.1455

LONGFELLOW DESIGN BUILD

Providing Cape Cod homeowners with a collaborative, efficient process that produces high-end, workmanship at a reasonable cost. Whether traditional cape-coastal or something more modern, Our staff architects, designers, and craftsmen will realize your vision and offer custom touches tailored to your family's lifestyle. Call or visit us online to schedule a free on-site consultation. 774.255.1709 or www.longfellowdb.com

MOREHOUSE MACDONALD AND ASSOCIATES, INC.

Morehouse MacDonald and Associates, Inc. (MMA) is one of New England's foremost architecture and interior design firms which has achieved an international reputation for versatile style and award-winning design that centers around their clients' individual lifestyles. With over five decades of experience, intuitive understanding, and imagination, the firm's niche is tailoring distinct designs to residences and commercial spaces which allow owners to live and work better... by design. 3 Bow St. 781.861.9500 or www.morehousemacdonald.com

PATRICK AHEARN ARCHITECT

Patrick Ahearn's historically motivated designs have advanced the art of placemaking in some of America's most affluent destinations. Whether restoring landmarked townhouses in Boston's Back Bay or creating new homes that reimagine the vernacular of New England, Ahearn demonstrates an unparalleled ability to combine the romance of traditional architecture with the ideals of modernism. His sensitivity to the property's original spirit results in a beautifully restored home that looks authentic and silent on the streetscape. 160 Commonwealth Ave. or www.patrickahearn.com

POLHEMUS SAVERY DASILVA ARCHITECTS BUILDERS

Polhemus Savery DaSilva Architects Builders (PSD) is a nationally recognized, award-winning integrated architectural design and construction firm specializing in new construction, renovations, and select institutional and resort buildings in coastal New England. The company is committed to a client-focused approach, valuing collaboration, responsiveness, and easy working relationships. This results in thoughtful work, exceptional design and construction experiences. www.psdab.com

STACK + CO.

Stack + Co. is both an Architecture firm and a Construction company. We believe that these two processes can happen more collaboratively and the result is a better process, a better building, and more of the project budget going towards the finished product. We emphasize good design, and a more informed and technology-leveraged Construction Management approach. 555 East 2nd St. 800.265.3884 or www.stackac.com

ART

DTR MODERN GALLERIES

DTR Modern is a seasoned gallery operation with locations in Boston, New York, Palm Beach, and Washington D.C. We offer a selection of artworks by blue-chip modern and contemporary artists such as Basquiat, Chagall, Dali, Hirst, KAWS, Koons, Lichtenstein, Longo, Mr. Brainwash, Miro, Murakami, Picasso, Slonem and Warhol. DTR Modern Galleries: 167 Newbury St. 617.424.9700 or www.dtrmodern.com

CLOSETS

CALIFORNIA CLOSETS

California Closets does more than just closets - they are experts in space planning for every area of your home. Regardless of your needs or aesthetic preferences, California Closets can design and deliver a unique storage solution that looks beautiful and performs as promised. 1660 Soldiers Field Rd. 617.254.0499 or www.californiaclosets.com

CONTAINER STORE

Introducing the Evolution of Custom Closets! Avera will become the newest option under The Container Store Custom Closets line, joining Elfa Classic, Elfa Décor and Laren. Now, more than ever, there's a custom closet option to fit every style, size and budget at The Container Store. Welcome to the evolution of custom closets. Locations Nationwide. 855.827.5623 or www.containerstore.com/custom-closets

CULTURAL INSTITUTIONS

24TH ANNUAL BOSTON INTERNATIONAL FINE ART SHOW

The 24th Annual Boston International Fine Art Show takes place October 24 - 27, 2019, featuring 40 galleries from Old Master to Contemporary. The art fair also includes "Emerge", a special section offering work by emerging and mid-career artists. Gala Preview Thursday October 24, 5:30-8:30pm, Weekend: Friday 1pm-8pm, Saturday 11am-8pm, Sunday 11am-5pm. Tickets \$15 at the door, under 12 free, including all special programs, re-admission, show catalog and coat check. A café and discount and valet parking available. 529 Tremont St., South End 617.363.0405 or www.fineartboston.com

COMMONWEALTH SHAKESPEARE COMPANY

Known for Free Shakespeare on the Common, CSC is dedicated to artistic excellence, accessibility, and education. Presenting plays of the highest artistic caliber that celebrate ideas and language, we eliminate barriers, physical, economic, and cultural to bring live theater to audiences throughout Greater Boston. We cultivate young artists with the value of community engagement, and collaborate with educators to bring literature to life in the classroom. 101 Arch St. 617.426.0863 or www.commshakes.org

NEW ENGLAND CHAPTER OF ASID

The American Society of Interior Designers (ASID) advances the interior design profession and communicates the impact of design on the human experience. The organization collaborates to promote the value of interior design and prepares members to excel in the dynamic and evolving profession. 978.674.6210 or www.ne.asid.org

DESIGNED TO ENGAGE

Meet top industry executives at our invite-only event, and create meaningful connections

what? Design Edge is a highly curated, trade-only event featuring the best home furnishing brands in North America. The first event of its kind, Design Edge brings leading designer-centric manufacturers to premium markets throughout the country to connect with the region's designers and tastemakers.

why? Design Edge closes the gap between manufacturer capability and designer awareness. Through executive level access, the best brands in the industry share their product collections, designer programs and versatility in meeting the scale and scope of project demands.

who?



when? DAY 1 **Wednesday, September 23rd, 2020** 10am - 5pm/ 5pm - 7pm Reception
DAY 2 **Thursday, September 24rd, 2020** 10am - 5pm

where? **Boston Design Center, 1 Design Center Place** The Loft, 5th Floor, Boston, MA 02210

2021 UPCOMING SHOWS

Design Edge Seattle, Spring 2021 | Design Edge Chicago, Summer 2021
Design Edge San Francisco, Fall 2021 | Design Edge Miami, Winter 2021

DESIGN CENTERS

BOSTON DESIGN CENTER

The Boston Design Center is the epicenter of design in New England, featuring 70 home and contract showrooms representing the best in both domestic and international product lines. With our vibrant design community, inspiring common spaces, and location in the Innovation and Design Building in Boston's Seaport District, the BDC is the region's preeminent destination for luxury interior furnishings. *1 Design Center Pl. or 617.449.5501*

CASA DESIGN GROUP

Casa Design Group is one-stop source for today's best contemporary design. For over 20 years, Casa Design has been curating a collection of the finest European brands for both commercial spaces and private residences. Look through Casa Design's selection online or visit all four showrooms in Boston's SOWA Art + Design District. *888.246.6451*

SPLASH & SPRITZO SHOWROOMS

Immersive. Refreshing. That's the experience at Splash's 10,000 square foot state-of-the-art interactive design center in Newton. Their sister showroom locations, Spritzo, are located in Saco, ME, Providence, RI and Worcester, MA. New England's first boutique kitchen and bath showroom showcase the industry's premier brands and coveted designs. *244 Needham St. or 617.332.6662*

DESIGNERS

ALEXANDRA SLOTE INTERIORS

Boston Based Interior Designer Alexandra Slote specializes in unique designs that reflect the lifestyle of each individual client's taste. Her intuitive approach to her clients needs have granted her the opportunity to work on a large variety of projects encompassing Modern to Traditional designs. Alexandra's passion for Art and Travel are reflected in her creative designs. She creates beautiful timeless spaces with an ease of comfort in her personal style that sets her apart. Recent projects have included units at Millennium Tower, Millennium Place, The Clarendon, and a six-story brownstone on Marlborough Street. *www.alexandrasloteinteriors.com*

ALX GROUP INC.

ALX Group specializes in outside the box design, use of creative materials and sourcing new and innovative products for commercial and residential projects. *www.alxgroupinc.com*

ANA DONOHUE

Ana Donohue Interiors is an award winning designer who is dedicated to infusing a client's personality and vision into a unique, beautiful and unexpected space. Established in 2002, Ana Donohue Interiors specializes in residential design. Ana Donohue Interiors has a reputation for mixing styles in a room and truly making a house feel like a home, balancing an approach that respects her client's opinions and tastes while blending in design that introduces a degree of the unexpected and delivering new possibilities. You can see Ana's work on HGTV House Hunters Renovations, New England Home Magazine, Boston Globe Magazine, Boston Common, Redbook, Canadian Home Trends, Utah style & Design as well as the upcoming issue of Interiors Boston. *www.anadonohueinteriors.com*

BRADFIELD INTERIOR DESIGN LLC

Boston based interior designer John Bradfield's design philosophy is founded on creating environments amplified by his clients' personalities. In his 20 year endeavor he has shaped an aesthetic freed of scripted styles and momentary trends believing that the best design draws on many personal and cultural references to evoke emotion in an atmosphere. His ultimate goal is to use diverse materials including contemporary art, antiques and custom elements to develop dynamic environments which engage, amuse, comfort and most of all...inspire. *60 K St. or 415.305.2647*

BRIAN WORTHINGTON & ASSOCIATES

Neutral palettes layered with texture to create interest: that's Brian Worthington's signature style in a nutshell. Brian's worked for some of the most prestigious design firms in the world, such as Colefax and Fowler in Mayfair, London and Chelsea Editions. Brian's mission is to create interiors that are timeless, original, authentic and refined. With an exceptional, personalized level of attention to detail, Brian Worthington & Associates have transformed homes across the globe. With offices in London, New York & now Boston.

CAROLYN THAYER INTERIORS

Carolyn Thayer Interiors is an interior design firm located in Boston and on Nantucket. We combine practical classics with modern function while striving to create a style of endurance and beauty. Our firm works to transform a house, or set of plans, into a magnificent home while maintaining individuality and elegance. With almost 20 years of hard work and professionalism, Carolyn Thayer Interiors provides exquisite elegance delivered with complete satisfaction! *59 Dartmouth St. 617.488.9533 or www.carolynthayerinteriors.com*

DAHER INTERIOR DESIGN

Daher Interior Design is a full-service interior design firm creating stunning, timeless spaces for the most discerning clients. From sprawling coastal homes to luxurious high-rise condominiums, Paula Daher, along with her team of accomplished, innovative designers, has created beautiful, award-winning interiors that are unique and perfectly functional for every client. *224 Clarendon St. at Newbury or 617.236.0355*

ELEVEN INTERIORS

Since 2005, Michael Ferzoco and his award-winning team of designers have been creating residences in harmony with their clients' lifestyles throughout Boston, New York and Los Angeles. Combining vintage and antique furnishings, custom pieces and contemporary selections into every project allows them to design original, sophisticated spaces that are unique to each client. *617.423.1114*

GAUTHIER-STACY

This award-winning, high-end interior design firm has created Nantucket summer retreats, NYC apartments, and island homes in Hawaii and Florida. Their commercial work includes Great Harbor Yacht Club in Nantucket and Edson Hill Inn in Vermont. Keep your eyes on The Wauwinet for an upcoming guest and bathroom refresh! Share all of your inspirations. Gauthier-Stacy's design team takes its cues from books, film and real life. *81 Wareham St. 617.422.0001 or www.gauthierstacy.com*

GEORGANTAS DESIGN + DEVELOPMENT

A husband and wife team creating inspired space for contemporary life. Building creatively, handsomely, exquisitely, we believe in designing and creating spaces that exceed our clients' visions. Peter and Elizabeth work together to craft custom-built-and-designed living environments that work to fit and compliment the tastes and lifestyle of their discriminating clientele. The perfect pairing of a distinguished real estate developer and one of Boston's most talked-about interior designers, Peter & Elizabeth believe in elevating ordinary spaces into truly unique, functional, timelessly relevant places. Their work is inspired by the lives of their clients - they want to know what you do in your spaces, and how you live in them. Whether you're an expecting couple who needs an adaptable space to grow with your future family, or you're an impassioned home chef who needs a chef's kitchen, they build and design your spaces in order to realize their full potential. *617.941.4732 or www.livegeorgantas.com*

GRAYSCALE DESIGN

Grayscale Design is a Boston based Interior Design firm specializing in Residential and Boutique Hospitality interiors. Founded in 2014 by Designer Misty Gray, the firm is deeply rooted in the philosophy that every project is a synthesis of form, function, and personal aesthetic - with the ultimate goal of capturing a client's vision and unique lifestyle. *Joy Street Artist Studios, 86 Joy St. 617.625.2572 or www.grayscale-design.com*

ID8 DESIGN STUDIO

We are a Boston based boutique design firm that provides our clients with customized intuitive interior design solutions. Every home, like every homeowner, is unique. Interior design created through intuitive interpretation means building something one of a kind. *36 Bromfield St. 857.250.2669 or www.id8designstudio.com*



Doing whatever it takes to help children and families

THRIVE AND SUCCEED

The Home provides a seamless continuum of services for every stage of child and family development, making a positive impact on over 14,000 lives each year.

Help us help them ... visit www.TheHome.org/give to give today.

www.thehome.org
888-HOME-321

MODERN LUXURY
Interiors
BOSTON

JANINE DOWLING INTERIOR DESIGN

Janine Dowling Design Inc. is well-versed in a wide range of styles from traditional to transitional to modern. Janine works closely with her clients to develop the right style for their home, personality and lifestyle. Whenever possible, she looks to sustainable solutions that are long-lasting, beautiful, and gentle on the earth. 617.445.3135 or www.janinedowling.com

JEANNE RACIOPPI DESIGNS

Jeanne Racioppi Designs was founded in 2000 by interior designer, Jeanne Racioppi, Allied Member. This high-end firm has completed residential, commercial, and hospitality projects in the US and Canada. Our team of professional designers, craftsman, and suppliers work together seamlessly to deliver unsurpassed quality from the initial design concept through project completion. Jeanne Racioppi Designs offers interior design services, construction management, seasonal design and decoration, special event planning and restaurant design. 781.820.1505 or www.jeanneracioppidesigns.com

JENNIFER PALUMBO INC.

Jennifer Palumbo Inc. has been recognized for their graceful integration of interior design, architecture and individuality. The teams work is appreciated for its attention to detail and the unique use of products. Their customized approach creates "one of a kind" interiors that reflect the clients style personality. The design philosophy features the sophisticated use of color, texture, and form in a way that highlights the space, while showcasing the clients' personality. Jennifer Palumbo Inc believes "any interior space can fulfill its function while encompassing beauty and timelessness." The purity of simplicity and balance are at the core of their work. 246 Walnut St.

KATHLEEN HAY DESIGNS

Award-winning designer Kathleen Hay heads up a full-service interior design firm specializing in high-end, residential and commercial projects. Recognized by several distinguished international panels as one of the world's leading designers, Hay has been featured often in regional, national, and international publications. She is recognized for her trademark interiors: clean, sophisticated spaces that exude chic comfort and appealing suitability. 508.228.1210 or www.kathleenhaydesigns.com

KRISTEN RIVOLI INTERIOR DESIGN

Kristen Rivoli Interior Design places a great emphasis on designing for a collected, comfortable look. The overarching goal being to create a home that is one-of-a-kind and incredibly livable. By listening and engaging our clients during the design process, we're able to deliver their dream home. Recent projects include everything from high rise and suburban residences to show houses and commercial spaces. 781.729.0405

LEBLANC DESIGN

LeBlanc Design: The studio is located in Boston's SoWa Design District and is known for creating gracious architectural interiors that radiate warmth, harmony, and comfort. As a full-service interior design firm, LeBlanc Design can handle all aspects of the design process from schematics to final installation. 560 Harrison Ave. 857.957.0911 or www.leblancdesign.com

NICOLE HOGARTY DESIGNS

Nicole approaches all of her projects with supreme attention to detail and with the belief that luxury need not be pretentious. Nicole and her team focus on style over trends while balancing beauty with function. NHD hopes their extensive knowledge, passion for design and full service approach will allow the client to enjoy the entire process. NHD is Boston based and is currently working on projects throughout the US. 530 Harrison Ave. 617.849.8551 or www.nicolehogarty.com

PLANETA DESIGN GROUP

Planeta Design Group is a multidisciplinary design firm founded in 2007 offering interior design, fine art procurement, custom furniture design as well as full project programming and management services for clients in residential, corporate, hospitality, multi-residential and mixed-use projects. Principal, Patrick Planeta, leads his firm in a passionate, immersive, detail-driven way, offering unparalleled services, successfully translating each client's vision and needs into an optimal design. Located in Boston's historic South End neighborhood, Planeta Design Group serves clients throughout New England and around the world. 617.956.0805 or www.planetadesigngroup.com.

RACHEL REIDER INTERIORS

Rachel Reider Interiors is a nationally acclaimed interior design firm known for creating artfully layered upscale interiors in residential and commercial settings. Whether reworking an existing space or overseeing a major renovation, Rachel and her skilled team guide their clients through the design process from concept to completion. 535 Albany St. 617.942.2460 or www.rachelreider.com

RENOVATION PLANNING & INTERIORS

Designer Jeff Swanson founded the firm in 2001 with a simple focus on creating thoughtful interior spaces. Years later, his team of designers offers a complete design solution: inspired architectural spaces and beautifully-appointed interiors. All centered on the client's personal style and life. Comfortable in all levels contemporary to traditional. They understand that while form typically follows function, the form must be beautiful. After presenting their clients with unique design ideas, they help select the myriad of fixtures and materials for their renovation, develop full construction documents, select furnishings and accessories for the spaces and ultimately keep a designer's eye on the details during the construction and installation phases. Whether a whole house redesign and renovation, just a kitchen or bath or new furnishings for your home, you'll find their creative team is accessible, responsive and organized making the process enjoyable. Located in Boston's historic Beacon Hill. 51 Charles St. 617.236.7399 or www.renovationplanning.com.

SPAZIO ROSSO, INC.

SPAZIO ROSSO is a full-service interior design firm founded by Principal Designer Stephanie Rossi in 2005. In the fourteen years since, the firm has established a reputation for interiors that are bold, balanced and dynamic and that, as an extension of the firm's diverse clientele, defy conventional design clichés. 978.263.5870 or www.spaziorosso.com

SUSAN CORSON DESIGNS

Susan Corson Designs has been creating beautiful homes for 30 years. We love mixing modern & traditional styles and bringing new ideas to your projects. Our services include designing everything from total new construction to a single room. Let us help you find your perfect mix! 617.332.9207 or www.susancorsondesigns.com

FAVREAU DESIGN AT THE FAVREAU LOUS FACTORY

Boston's hottest new interiors destination hovers eight stories above the Seaport District. The home of international interior designer Steven Favreau, focusing on high-end residential, boutique hotel and restaurants design, this breathtaking loft is over 11,000 square feet. With one-stop interior design services and antiques, vintage pieces, original custom furniture, artwork, rugs and lighting, no one should miss this Boston treasure. 12 Channel St. 415.971.2219 or www.favreaulousfactory.com

VWOOD INTERIORS

VWood Interiors is Boston based with projects spanning Boston, Nantucket, New York, and Palm Beach. Our team is rooted in the belief that great design comes from innovative solutions, attention to detail, and devotion to designing for each client's lifestyle. 781.254.1375 or www.vwoodinteriors.com

FABRIC, LINEN, BEDDING

LINDA CABOT DESIGN

Linda Cabot Design is an organic home textile company that creates textiles that are both responsibly sourced and beautifully made. Our designs are rooted in a love for the natural world and inspired by the landscapes and seasons of New England and beyond. Created exclusively from the paintings of Linda Cabot, each unique pattern is truly a work of art. Each of our small batch items are uniquely stitched by local artisans. www.lindacabotdesign.com

THREAD BOSTON

Thread is a full-service drapery workroom to the trade. We specialize in draperies and soft home furnishings, as well as window treatment automation and consultation. Quality craftsmanship, attention to detail and expertly installed treatments has been our standard since 2001. 200 Butterfield Dr. 508.429.5606 or www.threadworkroom.com

MODERN LUXURY

TOP
LIVE THE
GOOD LIFE

THE HOTTEST
PRODUCTS, EXCLUSIVE
EVENTS AND SPECIAL
OPPORTUNITIES FROM
OUR PARTNERS.

1 COLDWELL BANKER
ELIZABETH CRAMPTON

Elizabeth consistently ranks in the top 1/2% of all Coldwell Banker Realtors internationally. A native New Englander with 21 years of experience in Boston area real estate, Elizabeth puts her intimate knowledge of Boston and its' sought-after suburbs to work for you. She looks forward to working hard for you. Please connect on IG, FB, and Youtube.

finebostonliving.com, [@finebostonliving](https://www.instagram.com/finebostonliving)



Eric Roth Photography

4 S+H CONSTRUCTION

Celebrating over 40 years in business, S+H Construction is one of the Greater Boston area's most respected residential construction firms. An award-winning company—including seven Best of Boston awards—S+H collaborates with architects and other design professionals to offer residential renovations, custom building, historic restorations, site work, and landscaping solutions.

shconstruction.com, 617.876.8286

5 IMMERSIVE. REFRESHING.
SPLASH.

When it comes to your home, you deserve the best. At Splash Newton, Boston's premier state-of-the-art kitchen and bath design center, you'll be immersed in the latest technology, hottest trends and top brands. From a single product to a large master bathroom renovation, Splash's team of seasoned design consultants will be there to help you select the perfect fixtures, hardware, accessories and more. Splash—90 years of beautiful.

Visit the showroom or splaspritzo.com to learn more



2 MAGNIFICENT COUNTRY
ESTATE — COLDWELL
BANKER WESTON

Completely remodeled, the 10,000-sq. ft. house boasts a stunning interior by a celebrity designer whose signature style of casual elegance showcases a colorful, youthful and unpretentious décor with the ultimate in luxury finishes by the finest artisans and international vendors. Contact: Kathryn Alphas Richlen, 781.507.1650



3 THE FLOWER POWER PARTY

The Flower Power Party kicks off Nantucket's Daffodil Weekend, which is the highlight of spring on the island and the true start to the season! Hosted at the Whaling Museum in the heart of downtown, this event includes live music, hors d'oeuvres and festive libations, and prizes for the best blooming outfits! All ticket proceeds benefit the Nantucket Historical Association.

nha.org, 508.228.1894

FURNITURE

ARTEFACT HOME|GARDEN

Artefact is northern New England's premier destination for the innovative Verellen furniture line by renowned designer, Tom Verellen. The styles are at once both modern and timeless. Bench made in the USA by highly skilled craftsmen, the Verellen offerings include upholstered pieces, case goods and lighting. Additionally, the new shop features an exciting collection of tabletop and decorative accessories, gifts and carefully curated pieces from local artisans and artisans from around the globe. *1317 Washington St. or 857.350.4397*

ETHAN ALLEN

Ethan Allen blends fresh, innovative style with exceptional craftsmanship, an unwavering commitment to environmental stewardship, and advice from professional designers- whose services are always complimentary. Visit design centers in Quincy, Burlington and Natick. *www.ethanallen.com*

HOLLY HUNT BOSTON

Known for a look that is consistently at the forefront of style and quality, HOLLY HUNT showrooms and collections lead the industry in luxury home furnishings. The company designs, produces and showcases custom made product including indoor and outdoor furniture, lighting, rugs, textiles and leathers. HOLLY HUNT has opened its first standalone showroom in Boston. Currently in a temporary space in the Boston Design Center, it will open a permanent showroom in the building in early 2020. *Boston Design Center or www.hollyhunt.com*

HOMESENSE

Experience a home store designed to spark your creativity with style & savings at every turn. Feel the quality of leather sofas and handwoven rugs. Explore an always-fresh selection of famous brands and global discoveries for every room of your home, all with prices that make sense—at Homesense. *www.homesense.com*

JH KLEIN WASSINK

At JH Klein Wassink we create individual pieces or all the cabinetry, woodwork and furniture for your entire home or business in a full range of styles from traditional to contemporary. We have the talent, technology and creativity to value engineer your vision and tackle any challenge. *30 Beharrell St. 617.283.2416 or www.jhkw.com*

LIGNE ROSET (BOSTON)

Known for its artful collaborations with both iconic and up-and coming talents in contemporary design, Ligne Roset offers clients an entire lifestyle in which to live boldly and beautifully. Family-owned since 1860, Ligne Roset is a multinational company with factories and headquarters in France, and over 1,000 retail locations worldwide. *200 Boylston St. or www.ligne-roset.com*

MADBURY ROAD

Madbury Road is a local supplier of high quality residential and commercial outdoor lounge and dining furniture. From furnishing some of Boston's most popular restaurants to the finest residential patios and rooftops around the city, Madbury is changing the way people shop for outdoor furniture. *866.331.6042 or www.madburyroad.com*

MITCHELL GOLD + BOB WILLIAMS

Mitchell Gold + Bob Williams is a home furnishings brand best known for comfortable, stylish and value-conscious upholstery, storage, tables, lighting, rugs, accessories, bed linens and a carefully edited collection of wall art. Shop in-store at one of 30+ Signature Stores and online at *www.mgbwhome.com. 142 Berkeley St. or 617.266.0075*

MODERN RELIK

Modern Relik specializes in one-of-a kind home décor that marries the classic and the avant-garde, all delivered with the expert guidance that will help consumers learn to make bolder design a part of their lives and homes. *485 Harrison Ave. 617.513.3336 or www.modernrelik.com*

MOLTENI&C DADA

Molteni&C Dada is a leading brand in contemporary Italian furnishings, where long standing craftsmanship, quality and innovative design are beautifully entwined. With the help of esteemed designers, such as Gio Ponti, Patricia Urquiola, Jean Nouvel, and Rodolfo Dordoni, among others, Molteni&C provides a number of solutions suited to all parts of the home, from custom closets to living room, bedroom, home office and Dada kitchens. Visit the showroom in Boston's historic SoWa Art District, *450 Harrison Ave. or 617.858.0805*

MONTAGE

This high profile showroom has been in business for than 50 years. Specializing in fine contemporary furniture, the family run business features lines including B&B Italia, Cassina and Acerbis, along with Antoine Proulx the hand-crafted line created by Massachusetts-born Marc Desplaines. *75 Arlington St. 617.451.9400 or www.montageweb.com*

ONE KINGS LANE

Since launching in March 2009, One Kings Lane has established itself as a premiere home shopping destination and resource. With a breadth of the best-quality furnishings and finishing touches, One Kings Lane provides the access, inspiration, and help to create a style that is uniquely yours. One Kings Lane newest shop, located at 25 Thomson Place in Fort Point, adjacent to Boston's vibrant Seaport District, follows the brand's successful flagship opening last fall in Soho and the decision to turn their first seasonal shop in Southampton, NY into a permanent retail location. *25 Thomson Pl. or www.onekingslane.com*

ROCHE BOBOIS

For a limited time only, discover our 8 Exceptional Days event from October 13 to 21 and enjoy enticing offers on all new collections. Discover the latest trends, innovative design, a high level of customization, and the best of European quality and know-how. *2 Avery St., Ritz Carlton Towers or www.roche-bobois.com*

ROOM & BOARD

For more than 30 years, Room & Board has focused on the simple idea that good design should be beautiful, affordable and long-lasting. They work closely with American Artisans to offer furniture and accessories, even custom pieces that fit the needs of modern life. They're proud that more than 90 percent of the products sold are handcrafted in the United States to give customers the best combination of quality and price. *375 Newbury St. or www.roomandboard.com*

STEVEN POSTMA FURNITURE MAKER

Steven Postma Furniture Maker - Custom furniture design and manufacturing studio based in Boston MA. Steve designs and builds high-end contemporary and transitional original designs in wood, metal, glass and stone. All works are made by hand and finished in his studio. *501 Gleasondale Rd. 978.501.6025 or www.stevenpostma.com*

STUDIO 534

Studio Five Three Four a leading home decor showroom in the Boston Design Center brings fashion forward collections of textiles, furniture, and lighting to New England. Our partnerships range from small boutique style brands to large iconic brands from all over the world. *1 Design Center Place or www.s5boston.com*

GENERAL CONTRACTORS

BERTOLA CUSTOM HOMES

"On time and budget" is not an expectation, it is a given. We strive for much more- excellence. Over ten years in business, we have been recognized for our performance excellence in the completion of many building projects. Proud of our personalized service, our well organized staff and legendary attention to detail have consistently resulted in beautiful projects of quality, style and beauty. *857.975.1809 or www.bertolacustom.com*



Introducing the **Verellen Salon**
at **Artefact Boston**

1317 Washington Street, Boston MA 857.350.4397
1000 Pleasant Street, Belmont MA 617.993.3347
info@artefacthome.com | www.artefacthome.com



Shop | Consign

Chic Consignment

44 Main St. Andover, MA

chicconsignment.com

BROOKES + HILL CUSTOM BUILDERS, INC.

Brookes + Hill strives to deliver upon the cutting-edge designs that architects and designers envision. From a project management perspective, we believe in working closely with our clients, as well as architects, designers, and trade professionals to produce a winning team. Our successful team effort truly enables the entire construction process – from initial concept to move in – to run seamlessly with a constant stream of communication, all according to plan. *187 Lexington St. 781.861.0086 or www.brookesandhill.com*

FBN CONSTRUCTION

FBN wants to be YOUR General Contractor. We build, the way our clients have asked us to build, with your best interests at heart, and bring our immeasurable experience to bear to that end. We are different than most others and are eager to show you how. *17 Wolcott Ct. or 617.333.6800*

JW CONSTRUCTION, INC.

At JW Construction we see beyond what currently exists and reimagine what could be. To us the most important part of the process is the relationship we create together – resulting in a journey that is both remarkable and filled with possibility. JW Construction, Inc. – Create Something Remarkable *617.547.2800*

MODERN HERITAGE LLC

MH is a residential custom building firm located in historical downtown Amesbury MA. Recognized for building highly customized homes & specializing in cabinetry & millwork, MH sets the bar for highly detailed & complex projects. With its full range of services, MH makes the construction process a professional & trusting experience. *52 Main St. 781.534.9200 or www.modernheritage.com*

PAYNE BOUCHIER

Payne | Bouchier has been building, restoring and renovating fine homes throughout New England since 1981. Whether the design imperative is a historically authentic restoration or sleek modernity, we will bring our rigorous project management and skilled craftsmanship to bear. We work closely with clients and their design teams to ensure that every project is beautiful and the process is enjoyable. Let us build your vision into a finely crafted reality. *173 Norfolk Ave. 617.445.4323 or www.paynebouchier.com*

S+H CONSTRUCTION

One of the greater Boston areas premier residential renovation and custom home building companies, S+H collaborates with homeowners, architects and other design professionals offering renovations, custom building, historic restorations, site work and landscaping solutions. Celebrating 40 years of in business, S+H provides a dedicated team who share a commitment to customer satisfaction. *26 New St. or 617.876.8286*

WOODMEISTER MASTER BUILDERS

Established in 1980, Woodmeister Master Builders is an award winning General Contractor and Architectural Millwork Shop headquartered in Holden, Massachusetts. In collaboration with the industries top design professionals, projects cover not only regional but national and international locations alike. When good enough isn't, *www.woodmeister.com*

GIFTS AND ACCESSORIES

CHIC CONSIGNMENT

Chic Consignment is the premier luxury consignment shop north of Boston. We are committed to offering the best in 100% authentic pre-owned designer goods in store and online. Our professional staff provides exceptional personal service to both customers and consignors and daily new arrivals guarantee a thrill-of-the-hunt experience each time you step through our doors. Authentic designer deals, sustainable fashion, smart shopping. *44 Main St. or 978.474.1755*

KITCHEN & BATH

CLARKE DISTRIBUTION

Clarke, New England's Official Sub-Zero/Wolf/Cove Showroom and Test Kitchen, allows you to explore, taste and design your extraordinary kitchen. Use all of your senses and find inspiration from New England's top designers, test drive the world's finest appliances, learn from Sub-Zero and Wolf experts and enjoy free parking. *Clarke Sub-Zero/Wolf/Cove Showroom 800.842.5275 or www.clarkeliving.com*

DESIGNER BATH

New England's longest-standing provider of fine fixtures and accessories for the bath and kitchen, with two expansive showrooms open to the public. Thoughtfully-curated product selections offer options for all décor styles and price points and the associates are there to ensure a smooth process from purchase to installation. *97 River St. 800.649.BATH or www.designerbath.com*

FERGUSON ENTERPRISES BOSTON

Whether you're renovating an outdated bathroom or building your dream kitchen, Ferguson Bath, Kitchen & Lighting Gallery offers the best selection of products from today's most recognized brands. Our state-of-the-art showrooms and product experts ensure that your kitchen, bath and lighting selections are perfect for your project. *5225 Wisconsin Ave. NW 202.567.5656 or www.fergusonshowrooms.com*

FRANK WEBB HOME

If you believe there's no place like home, this is the place for you. Frank Webb Home offers extraordinary classic and trending products, friendly expert guidance and working displays to inspire designers and homeowners when remodeling a favorite space or building a custom home. Enjoy more than 40 bath, kitchen and lighting showrooms in the Northeast, including South Boston, Needham and Bedford, plus 10 additional Massachusetts locations. Find your local showroom at frankwebb.com or call 617.933.0666. *www.frankwebb.com*

JEWETT FARMS + CO.

Jewett Farms + Co. are cabinetmakers, obsessed with craftsmanship and passionate about quality. From our cabinet shop in Maine we merge traditional woodworking methods with fresh design to create modern, bespoke, luxury spaces. From hand selected materials to carefully applied finishes, every aspect of our work is completed with care and attention to detail. *Boston Design Center 978.961.1538 or www.jewettfarms.com*

POIRIER SALES & SERVICE

Family-owned appliance sales and service business since 1962 specializing in major home appliances from luxury brands like Sub-Zero, Wolf, Viking, Miele, Thermador, and Monogram. Enjoy the latest in refrigeration, cooking, kitchen cleanup, laundry, air control, grilling and more, plus in-house parts and service. *244 Needham St. 617.558.5500 or www.poiriersales.com*

PORCELANOSA

Porcelanosa offers the most advanced tile, kitchen bath and hardwood products for both commercial and residential applications. An unmistakable attention to detail and a combination of distinctive materials, colors, textures and shapes help to create living spaces that suit each discerning homeowner's unique sense of comfort. *1 Design Center Pl. 617.963.7666 or www.porcelanosa-usa.com*

SEVEN TIDE

Seven Tide classifies itself as a design adventure, featuring trusted, top-tier brands. Wolf, Sub-Zero, Cove, Marvin, Reflex, and Kohler are just a few incredible brands that Seven Tide offers. Seven Tide provides a one-of-a-kind, personalized experience that will allow you to think outside the box and expand the realm of possibility. The showroom is located in Boston's historical Seaport and offers complimentary on-site parking. *7 Tide St 800.842.5275 or www.seventide.com*

VENEGAS AND COMPANY

Located in Boston's South End, Venegas and Company is a Kitchen Design Firm and 4,000 square foot showroom that specializes in custom cabinetry for the private residence. We provide our clients a truly personalized experience with thoughtful designs, unique and innovative products, in an engaging and creative environment. *477 Harrison Ave. 617.439.8800 or www.venegasandcompany.com*

YOUR GERMAN KITCHEN

European kitchen cabinetry showroom specializing in the finest German products. Team of professionals for guidance through every step of the renovation process starting from conceptual design through installation. Large variety of door styles and unique material selection bringing an exclusive feel to all our projects. *308 Walnut St. 857.263.8415 or www.ygkboston.com*

LANDSCAPE AND OUTDOOR

DAN GORDON LANDSCAPE ARCHITECTS

Dan Gordon Landscape Architects is an award-winning landscape architecture firm known for beautifully designed outdoor spaces that humanize and inspire. The studio has created numerous award-winning landscapes, with design-work honored by the Boston Society of Landscape Architects and the Institute of Classical Architecture and Art. Regularly partnering with the highest caliber of architects and builders in the region, DGLA has developed a reputation for excellence in greater New England. *www.dangordon.com*

GREGORY LOMBARDI DESIGN

Gregory Lombardi Design has spent over twenty-five years focused on fostering meaningful connections between people and the places they inhabit. Our landscape architecture practice ranges in scale from urban rooftop terraces and sophisticated country estates to vacation compounds and high-end resorts. Our design philosophy calls for fresh interpretations of classic, timeless principles of order and proportion to create meaningful and memorable outdoor living spaces. *2235 Massachusetts Ave 617.492.2808 or www.lombardidesign.com*

MATTHEW CUNNINGHAM LANDSCAPE DESIGN LLC

Matthew Cunningham Landscape Design LLC is an award-winning design firm dedicated to creating lush, contextual landscapes, built from a collaborative, thoughtful process with our clients. *411 Main St. 617.905.2246 or www.matthew-cunningham.com*

NEW ENGLAND NURSERIES

New England Nurseries is a family-owned landscape, nursery and garden center in Bedford. For over 100 years, New England Nurseries has provided superior services and landscape supplies. The center sells anything and everything you could possibly need for outdoor living, in addition to offering professional services for planting and design. *216 Concord Rd. 781.275.2525 or www.newenglandnurseries.com*

R.P. MARZILLI & COMPANY, INC.

R. P. Marzilli & Company is a full service landscape contractor that builds and maintains the finest residential landscapes. Our clients enjoy beautiful and functional landscapes in city courtyards and rooftops, country estates, oceanfront bluffs, and suburban gardens. We provide maintenance service that ensures the landscape is managed throughout all seasons. *508.533.8700 or www.rpmarzilli.com*

LIGHTING

LUCIA LIGHTING & DESIGN

Lucia lighting & design is a residential lighting showroom for homeowners, designers, architects, and contractors with personalized one-on-one service. Lucia, the creation of lighting design expert-entrepreneur Lucy Dearborn and her business partner. Since 2005, gaining regional and national awards, with so much more than lighting, offering furniture and accessories. *311 Western Ave. 781.595.0026 or www.lucialighting.com*

NEENA'S LIGHTING

Neena's Lighting is your source for the best collection in modern lighting. Our promise to you is responsive, knowledgeable and caring customer service and design advice to help you find the "right light". Over the past 3 decades, with locations in Boston and suburbs, hundreds of thousands of customers have come to us for lasting lighting solutions and when asked are known to proudly announce to their friends "I got it at Neenas!" *380 Boylston St. 617.859.1900 or www.neenaslighting.com*

SHADE LIGHT SOLUTIONS BY VER-TEX CONSTRUCTION

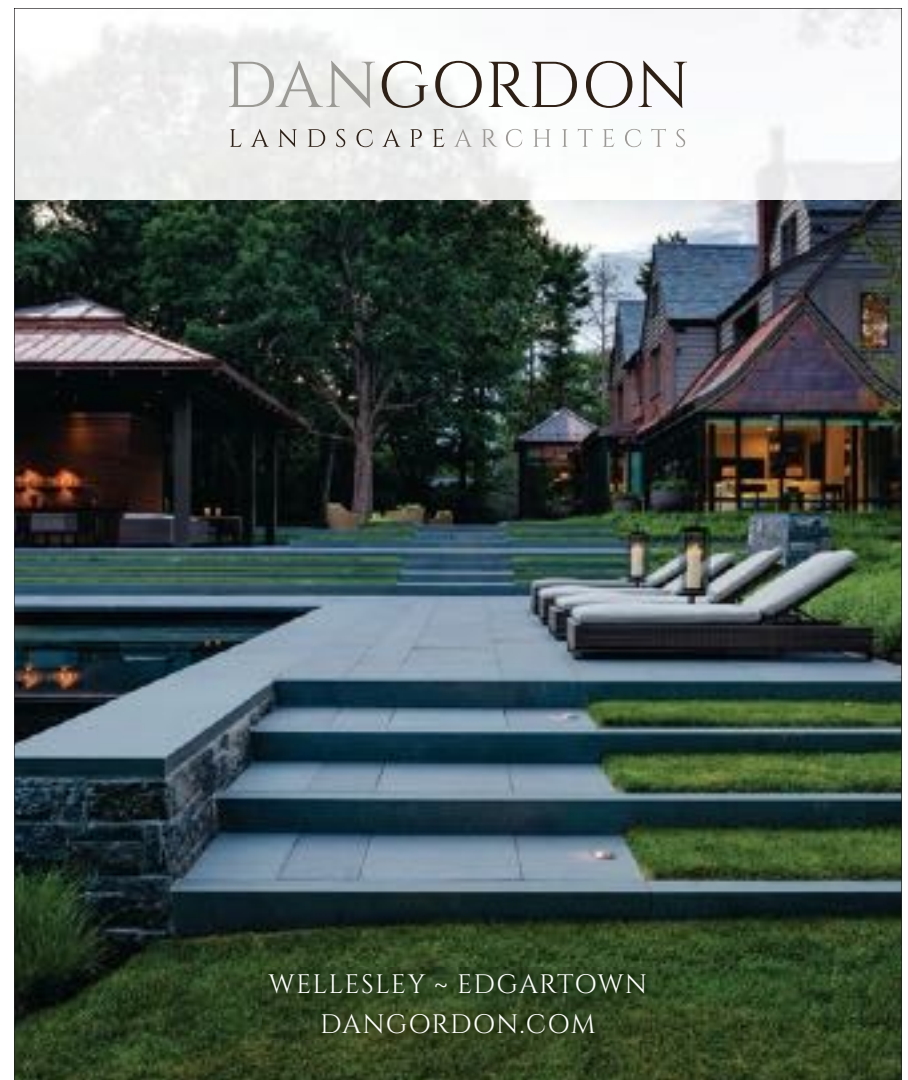
Shade Light Solutions combines 30+ years of window treatment expertise with the latest lighting control and automation technology to specify the perfect solution for any residential space. By working collaboratively with developers, architects, designers, contractors and homeowners, Shade Light Solutions custom tailors individualized solutions focused on integration and simplicity, offering an all-inclusive service for controlling light and managing each project from design conceptualization to specification, installation and programming. *263 Summer St. or www.shadelightsolutions.com*

URBAN ELECTRIC

From its roots as a small lantern studio, The Urban Electric Co. has grown over the past 15 years into a global presence in the shelter industry, celebrating a rich heritage of distinctive bench-made lighting fixtures. Based in historic Charleston, SC, the company exudes the very best of past and future, and is passionate about protecting both the tradition and sustainability of artisanal craft. *www.urbanelectricco.com*

WOODLIGHT COMPANY

WoodLight Company handcrafts beautiful light fixtures locally in Southborough Massachusetts. WoodLight's designs evoke a warm and simple elegance through clean lines, fine workmanship and the latest LED technology backlighting the company's signature wooden shades. See WoodLight's complete line of high quality lighting at the High Point Market Fall Show (IHFC-H1117). *WoodLight Company 508.834.8311 or www.woodlightcompany.com*



OTHER/MISC

345 HARRISON, BOSTON

Our luxury apartment homes feature impressive amenities like a resort-style pool and Sky Deck with breathtaking city views. Inside, you'll find modern apartment finishes including quartz countertops, Italian cabinetry, and keyless entry. Just steps away from hip eateries, transit centers, premier shopping, and prime work centers of Boston, 345 Harrison is the perfect new South End apartment community for you. Breathtaking amenities, apartments designed for living. *345 Harrison Ave. or 857.214.8265*

BOSTON ARCHITECTURAL COLLEGE

Founded 130 years ago, the BAC offers bachelors and master's degrees in architecture, interior architecture, landscape architecture, and design studies, which includes sustainable design, historic preservation, real estate development, and design for human health. Throughout its history, the College has upheld the importance of open admission, diversity, dedicated faculty, and the intrinsic value of both academic and experiential education. *320 Newbury St. or www.the-bac.edu*

BOSTON BILLIARDS

Boston Billiards has been selling and servicing pool tables since 1975. Their specialty is restoring antique pool tables for customers and for re-sale. You will also find new and used pool tables in their showroom. They have a complete service department for any repairs that your pool table may need. *343 Medford St. 617.625.2718 or www.info@bostonbilliards.net*

CHATEAU D'ESCLANS

A magnificent Tuscan Estate on the Mediterranean coast in Provence, Château D'Esclans is a truly exceptional site. With 108 acres of vineyards and 659 total property acres, the Château is most known for its Grenache vines, which produce grapes of an incredibly high concentration and award winning rosés. The property features an on-site tasting room that is open year-round by appointment only.

ECHELON SEAPORT

An address unlike anywhere else. Indoors and out, EchelonSeaport offers a captivating lifestyle experience, with over 50,000 square feet of never before offered amenities designed by Jeffrey Beers International, the leading tastemaker in hospitality interiors. Three elegant towers pair stylish residences branded by the leader in 5-star hospitality, Regent Hotels & Resorts. Extraordinary in every aspect, EchelonSeaport is the largest luxury residential development in Boston to date. *101 Seaport Blvd. 617.861.9330 or www.echelonseaport.com*

EUROPEAN HOME

European Home, manufacturer and distributor of innovative and contemporary fireplace products, has debuted their new electric fireplace line. With simple modern lines, app control, eco-friendly technology and stunningly realistic flame effects, these are the electric fireplaces you can finally get excited about. Visit the link to see the entire line. *30 Log Bridge Rd. 781.324.8383 or www.europeanhome.com*

FOUR SEASONS HOTEL ONE DALTON STREET, BOSTON

A modern skyscraper hotel in the heart of the Back Bay, with world class amenities. 215 rooms and suites feature floor-to-ceiling windows, with every detail carefully considered to anticipate the needs of modern travelers. Highlights include The Wellness Floor at One Dalton - an immersive spa experience spanning across an entire floor of the building, and Zuma - the world-renowned, Japanese izakaya-inspired restaurant and bar. *1 Dalton St. 617.377.4888 or www.fourseasons.com/onedalton*

IFDA NEW ENGLAND

The International Furnishings and Design Association's (IFDA) mission is inspiring collaboration within the furnishings and design industry to support its people, their products and services. The IDFA provides members with the tools and resources to enhance their business. *www.ifdane.com*

MANDARIN ORIENTAL, BOSTON

An intimately luxurious hotel, Mandarin Oriental, Boston combines classic New England elegance with refined Oriental touches to create a distinctive hospitality experience. Awarded both Forbes Five-Stars and AAA Five-Diamonds, the hotel features 148 of the city's most spacious guestrooms, exquisite event facilities and legendary personalized service. Hotel amenities include Massachusetts' only Five-Star awarded spa, a state-of-the-art fitness center and Bar Boulud, a French-inspired bistro from internationally acclaimed chef Daniel Boulud. *776 Boylston St. or 617.535.8888*

NANTUCKET HISTORICAL ASSOCIATION

The Nantucket Historical Association provides visitors with the incredible story of Nantucket through its amazing collections, programs, and properties. The NHA has an impressive roster of properties and sites, including the Hadwen House, Eleanor Ham Pony Field, "Oldest House" (Jethro Coffin House), Quaker Meeting House, and Whaling Museum/ Hadwen & Barney Oil and Candle Factory. *508.228.1894*

ONE SPRUCE PEAK

The pinnacle of alpine living in Stowe, Vermont, One Spruce Peak is the only slopeside, ultimate luxury residence in New England. Occupying the best site in the Spruce Peak community, this new six story ski-in/ski-out mountain retreat features 27 luxury residences, townhomes and penthouses up to 4,800 SQ FT, dramatic views, and a superior level of contemporary alpine design that connects you directly with the mountain. Residents of One Spruce Peak will live among the most amenities of any mountain village in the Northeast. One Spruce Peak breaks ground in April 2019. *www.sprucepeak.com*

PIER 4

Pier 4 is an iconic, ultra luxury bldg. comprised of 106 boutique residences being developed by Tishman Speyer directly on the waterfront. The location in the Seaport is unparalleled, surrounded by 3 sides of water. Every home will have private outdoor space, a water view & parking. There will also be ten penthouses with spectacular private roof terraces. *300 Pier 4 Blvd. or www.pier4boston.com*

SONJA B SELAMI LAW OFFICES

Sonja B Selami Law Offices have been providing Boston with quality real estate legal services for more than 15 years and representing buyers, sellers and lenders in all of their real estate and lending transactions. Selami Law offers convenient locations in Wellesley, Lexington, Bedford, Norwell and Boston. *www.selamilaw.com*

THE HOME FOR LITTLE WANDERERS

For more than 200 years, The Home has earned a reputation for doing whatever it takes to strengthen vulnerable families and keep children safe in their own communities, even when they don't have family support. Serving children and youth from birth to 22, we make a positive impact on over 14,000 lives each year through our services including behavioral health, therapeutic residential, education, adoption and foster care. *10 Guest St. or www.thehome.org*

WEQUASSETT RESORT AND GOLF CLUB

Wequassett Resort and Golf Club is Cape Cod's only Forbes Five Star resort. Set on 27 meticulously landscaped waterfront acres, the resort is comprised of 22 buildings of Cape Cod-style architecture housing 120 guest rooms and suites. Accommodations are reminiscent of comfortable seaside residences and luxurious in every way. The resort offers five restaurants from elegant to beachside chic. Recreational amenities include private beach, two pools, four Har Tru tennis courts, boating and sailing and 18-hole championship golf at the esteemed Cape Cod National Golf Club. *Pleasant Bay 800.225.7125 or www.wequassett.com*

WINSTON FLOWERS

Since 1944, Winston Flowers has been dedicated to making your home more beautiful. Their world-class garden design team will work with you to thoughtfully integrate greenery throughout your home, whether you're looking to create a welcoming entryway, elevate your dining area, or turn your rooftop into a stunning retreat. Create the at-home oasis you've been dreaming of with extraordinary container gardens featuring seasonal plants and specialty European vessels. *11 Florence St. or 617.541.1108*

WOODSTOCK INN & RESORT

Nestled in Vermont's Green Mountains, the Woodstock Inn & Resort is a four-season gateway to New England's heritage and personalized hospitality. Established by Laurance and Mary Rockefeller, today's Inn is preserved in 19th century craftsmanship and accented with elegant, artisanal amenities that reflect our sophisticated yet authentic style and service. Visit Vermont's most beautiful address today. *Fourteen The Green 877.559.4591 or www.woodstockinn.com*

REAL ESTATE BROKERS AND AGENTS

BENOIT MIZNER SIMON & CO.

Benoit Mizner Simon & Co. offers a fresh approach in a changing market. Their goal is to provide a superior level of professionalism and creative ingenuity with offices in Wellesley, Weston and Needham covering the MetroWest residential real estate marketplace. Their agents are dedicated professionals of whom provide their clients with the very best tools, technology, service, support and expertise to ensure seamless and successful results. *www.benoitmiznersimon.com*

CABOT & COMPANY

Introducing The Lydon. A new project by Georgantas Design & Development, at 401 Beacon Street in Back Bay. Refined design, in an understated sophisticated style, characterized by clean lines and sublime detailing. Offering single floor residences, on site garage parking, and a concierge to tend to your daily needs. Exclusive sales and marketing, Rene Rodriguez, Cabot & Co. *www.thelydon.com*

COLDWELL BANKER - BACK BAY

Welcome to the Back Bay Office of Coldwell Banker Residential Brokerage. The agents affiliated with this office serve all Boston neighborhoods. The Parisian-style boulevards, Charles River, Public Garden, and array of fashionable shops and restaurants provide the setting for Victorian brownstones, luxury high rises and condos. The goal is to provide the best services to clients: complete Real Estate, Mortgage, Insurance, Moving, and Relocation services. *www.nemoves.com*

COLDWELL BANKER - DAVID MACKIE

David Mackie specializes in representing Sellers and Buyers of High End residential Properties in Boston including Back Bay, Beacon Hill, South End and the Seaport. David's properties generally range from \$1,000,000 to over \$10 Million. His Expertise includes condominiums in both Brownstone and Full Service buildings, and single family residences. *399 Boylston St. or 617.480.6044*

COLDWELL BANKER - ELIZABETH CRAMPTON

Elizabeth Crampton consistently ranks among the top 1% of all Coldwell Banker Realtors nationwide. After 20 years working as a top producer in residential real estate, she shares intimate knowledge of Boston, Cambridge and top-tier suburbs including Winchester, Belmont, Lexington and Concord. A native New Englander with a finance and design background, Elizabeth has lived in New York City, Laguna Niguel, Paris, London and Munich. Whether working with a Seller or Buyer, Elizabeth looks forward to insuring each client a seamless experience. *1775 Massachusetts Ave. or 781.389.4400*

COLDWELL BANKER - MELINDA SARKIS

Melinda Sarkis, a residential real estate agent with Coldwell Banker's South End office has been recognized by Coldwell Banker as an International Presidents Elite Luxury Property Specialist. She is incredibly knowledgeable, extremely passionate, and dedicated to the industry. *617.943.8333*

MODERN LUXURY

Interiors

BOSTON

CULTURE | FASHION | JEWELRY | WATCHES
INTERVIEWS | DINING | NIGHTLIFE | DESIGN | TRAVEL

TO SUBSCRIBE, VISIT
MODERNLUXURYINTERIORS.COM/BOSTON

COLDWELL BANKER - TOM AARON

Tom Aaron is a Premier Associate with Coldwell Banker's Wellesley Flagship Office. Tom has expertise in a wide range of residential real estate including properties held in trust and/or estate, luxury homes, new construction, condos & antique/historic homes. Tom also helps to advise clients on land conservation, serving as a Corporate Trustee for the Trustees of Reservations, a land conservation organization. *781.248.8785*

COLDWELL BANKER : MACLEAN SPRINGER GROUP

A dynamic team of realtors whose commitment to going above and beyond for their clients is matched only by their extensive knowledge of the Boston area real estate market. With Over 20 years of experience, Marsha MacLean and Laura Springer pride themselves on being ethical and experienced real estate professionals who are truly dedicated to their clients. As part of Coldwell Banker's Back Bay Boston office, Marsha and Laura help their clients buy and sell properties in a wide array of locales including South Boston, South End, Back Bay, Dorchester, Charlestown, Brookline, Newton, Needham, Milton, Marion and Mattapoisett. *617.697.4378 or www.marsha.maclean@nemooves.com*

COLDWELL BANKER RESIDENTIAL BROKERAGE

Coldwell Banker has Boston offices in the Back Bay, Beacon Hill, Charlestown, South End, Waterfront and Jamaica Plain. For offices throughout New England and to view thousands of properties for sale visit. *www.coldwellbankerhomes.com*

DONAHUE MALEY | BURNS TEAM - COMPASS

Donahue Maley | Burns is Wellesley's top producing real estate team. The team is with Compass Real Estate, and was recently chosen by Compass to introduce its new technology platform to the local area. With close to \$400 million in sales, the team is incredibly reliable and high-performing. The team of six has eight current listings and over 100 recent transactions. *781.591.0671*

DOUGLAS ELLIMAN BOSTON ELAINE DOLLEY

Elaine's extensive sales record place her among the Elite brokers in Boston. Honesty, Integrity, Knowledge, and Loyalty are traits that drive Elaine. Her intricate knowledge of the BOSTON Real Estate market coupled with personal attention drive optimal results for her clients and customers. Real Estate is Elaine's Passion! *617.331.0243*

DOUGLAS ELLIMAN REAL ESTATE - MASSACHUSETTS

With the acquisition of Otis & Ahearn in 2018, Douglas Elliman quickly became a major player in the exciting Boston real estate market. The second largest independent brokerage in the nation with \$28.6 Billion in sales, Douglas Elliman specializes in general brokerage, luxury residential real estate and new development. Our 3 Boston offices serve all areas of Boston and Massachusetts including the Cape and Islands. Moreover, through a strategic alliance with Knight Frank, the world's largest privately-owned global property network, Douglas Elliman agents can offer unrivaled global reach to their clients in over 60 countries on six continents. *20 Park Plaza or 617.267.3500*

ELAINE DOLLEY - DOUGLAS ELLIMAN REAL ESTATE

Elaine Dolley has more than 25 years of experience in the Boston luxury residential real estate market. Her intimate and unparalleled knowledge of every neighborhood - from the glistening Seaport to historic Beacon Hill - coupled with her market savvy and adept negotiating skills, are among the reasons she is consistently named one of Boston's top luxury brokers. Backed by the resources of Douglas Elliman Real Estate, Elaine is ready to put her award-winning skillset to work for you. *20 Park Plaza 617.267.3500 or www.elliman.com/massachusetts*

FISHER REAL ESTATE

Fisher Real Estate Nantucket is a full-service, forward-thinking brokerage leveraging the latest technologies and unparalleled market analysis to enhance the foundation of our business - personal relationships. Turn to the Fisher blog for the latest Nantucket news and events. Voted #1 Real Estate Office in 2018. #fishernantucket *21 Main St. 508.228.4407 or www.fishernantucket.com*

GIBSON SOTHEBY'S BETH DICKERSON

One of Boston's most successful real estate agents, having listed and sold more than 2,500 properties for more than \$1 billion Beth Dickerson has represented many of the city's most prestigious residents and residences. Her experience in Boston real estate is not only one of the best, but one of the most seasoned and trusted in the industry. *277 Dartmouth St., 2nd Floor 617.510.8565 or www.bethdickerson.com*

GIBSON SOTHEBY'S INTERNATIONAL REALTY - THE CARUCCI GROUP

The Carucci Group is a division of Gibson Sotheby's International Realty that focuses on luxury residential real estate and niche commercial real estate. The Chief Executive Officer of The Carucci Group, Michael Carucci, is one of the most trusted names in the Boston real estate market. *277 Dartmouth St. or 617.901.7600*

J. BARRETT & COMPANY

J Barrett & Company prides itself in being the leading real estate firm serving Massachusetts' North Shore and its surrounding communities. Founded in 2007 and with 150+ agents in 7 offices located in Prides Crossing, Manchester-by-the-Sea, Beverly, Gloucester, Ipswich, Marblehead and their newest office in Peabody, they'd be honored to work with you to find exactly what you're looking for whether you're looking to buy or sell your property. *www.jbarrettrealty.com*

MGS GROUP

Maggie Gold Seelig is widely considered the "house whisperer" for those seeking exceptional properties in the Boston Area and Manhattan - often before they come to market. An attorney by training, Maggie founded her boutique brokerage firm to allow for a concierge high touch and fun experience - centered in personalized relationships with every one of her clients. With her finger on the pulse of the market and her extensive network, Maggie is focused on getting unprecedented results by offering strategic thinking that helps her clients realize every advantage. *187 Mt Auburn St. 617.645.4999 or www.mgsgroupprealestate.com*

REGINA WINSLOW WILLIAM RAVEIS

Regina Winslow is a Luxury Properties Specialist with William Raveis Real Estate's Back Bay office. She is a member of the National Association of Realtors as well as the Greater Boston Real Estate Board. Winslow is a top producer in her office, with incredible expertise, and over fifteen years in the business. *www.reginawinslow.raveis.com*

THE BIEGA + KILGORE TEAM

We offer a combined 20+ years of experience and have closed \$300+ million worth of property with our clients ranging from first-time home buyers to sellers of \$8 million new construction condo conversions. These clients have engaged our team because of our boutique level of service and deep knowledge of Boston's Back Bay, Beacon Hill, Bay Village, South End, Seaport, Waterfront, Midtown, and South Boston neighborhoods. *617.504.7814 or www.biegakilgoreteam.com*

WENDY FOX - COMPASS

Wendy Fox is an accomplished real estate agent and Luxury Property Specialist in Middlesex County and the Greater Boston area. As a Vice President with eight years of experience in real estate, Wendy describes herself as a "matchmaker between people and homes." With her skilled understanding of buyer and seller representation, luxury goods, sales and brokerage, Wendy has earned the reputation of a trusted and well-respected agent. *617.470.5033 or www.compass.com/agents/boston/wendy-fox*



The Home for Little Wanderers

Strong families. Strong life.



Reserve Your Seats Today!
thehome.org/vv20

VOICES & VISIONS 2020

Dream Beyond

October 15, 2020

Special Guest
Governor Charlie Baker
Commonwealth of Massachusetts

President's Award
presented to the
**Employees of
STAG Industrial**

Special Tribute to
Christopher Egan
Carruth Capital

Presenting Sponsors

 **NATIXIS**
INVESTMENT MANAGERS

TJX[®]

MODERN LUXURY
Interiors
BOSTON



WILLIAM RAVEIS REAL ESTATE

At William Raveis, we pride ourselves on our network and prioritize people over properties. Our 4,200+ sales associates across 9 states in the Northeast and Florida collaborate to provide a cohesive and unrivaled network of influence. Today. Tomorrow. Together www.raveis.com

REAL ESTATE, BUILDERS & DEVELOPERS

ADAMS + BEASLEY ASSOCIATES

Adams + Beasley is an award-winning firm with a proven track record in a broad range of skill sets including thoughtful remodels of interiors, detailed project planning, comprehensive general contracting, ground-up construction, sensitive historic restoration, and singular custom millwork. Our years of experience have proven that the most beautiful outcomes are achieved through rigorous and meaningful collaboration with Interior Designers, Architects, Clients, and our amazing in-house carpenters and project management teams. *669 Bedford Rd. or 978.254.5641*

RUGS, CARPET, FLOOR COVERING

COLONY RUG COMPANY

Since 1950, Colony Rug Company has been a leader in the decorative flooring industry. Catering to the Design Trade, their showroom boasts an expansive, curated product selection. They feature an impressive collection of the highest qualities in wool carpeting, colorful flat-weaves, hand-knotted rugs, in addition to their own exclusive products. Their staff is what sets them apart from other dealers: product knowledge is unsurpassed, professional on-site measuring services, highly skilled workroom and expert installation teams. Team Colony provides their services throughout the Northeast and beyond. *800.458.4445 or www.colonyrug.com*

DOVER RUG & HOME

Dover Rug & Home represents multi generations of excellence in Rugs, Carpeting, Window Treatments, Hardwood Flooring and Interior Design. We have largest selection of rugs and carpeting in New England with custom capabilities and expert installation for many budgets. Convenient locations Boston, Natick, Burlington. *721 Worcester Rd. or 800.368.3778*

LANDRY & ARCARI RUGS AND CARPETING

With locations in Boston, Framingham and Salem, Landry & Arcari appeals to consumers and designers all over the Massachusetts. The family-run operation specializes in fine oriental area rugs and broadloom carpeting which are artfully displayed in its showrooms. Landry & Arcari also develops custom carpets with a variety of clients. *333 Stuart St. 617.399.6500 or www.lanryandarcari.com*

STARK CARPETS

STARK is among the world's top destinations for the finest carpet, and handmade rugs. One of America's oldest and most respected family-owned home furnishings companies. STARK was founded in 1938 and continues the tradition of delivering only the highest quality products to the interior design trade. *One Design Center Place or 617.357.5525*

TUFENKIAN ARTISAN CARPETS

Tufenkian Artisan Carpets are recognized the world over for their unparalleled handmade character, premium materials, and timeless design. Area rugs expertly made according to ancient artisan traditions, Tufenkian's Tibetan and Armenian carpets remain vibrant and beautiful for generations, their lifetimes measured in decades and centuries instead of years. *312.329.9705 or www.tufenkiancarpets.com*

STONE, TILE, GRANITE

CUMAR INC

Cumar Inc. was established in 1992 and has grown to become the leading source for top choice natural stone, including marble, quartzite, granite and semi-precious stone slabs. Our on-site inventory is unrivaled, and our unsurpassed state of the art fabrication facility and craftsmen ensure our ability to execute the most demanding stone projects. *69 Norman St. 617.389.7818 or www.cumar.com*

DALTILE

The possibilities are endless when you make Daltile a part of your next design project. Visit one of Daltile's many showrooms and select from an extensive range of countertops, tile, stone and mosaics. Design Consultants are available to help bring your vision to life, offering their expertise and design tips. Find your local Daltile showroom at www.daltile.com www.daltile.com

EUROPEAN GRANITE & MARBLE GROUP, INC.

For the past 3 decades we have traveled the world to hand pick the very best quality stones. With more than 3,000 slabs in stock, we are conveniently located at 675 Canton Street, Norwood. This 90,000 sq ft warehouse houses the latest and greatest selection of marble, granite, quartz, porcelain and exotics slabs. For the ultimate stone shopping experience call our office at 781.666.6690 to schedule an appointment today. www.egmcorp.com

IDEAL TILE OF NEWTON

Beautifully-designed imported tiles from the latest trends to the most cherished traditions. Ideal tile's services include design, sales and installation of stone and tile. They are a nationally-recognized industry leader in the residential installation of 6mm porcelain slabs with skilled crews that offer white-glove treatment. *Lifestyle Plaza 244 Needham St. 617.559.0303 or www.idealtileboston.com*

THE TILE SHOP

Your dream room starts here. With hundreds of new products just added, The Tile Shop's selection of high-end tiles and accessories has never been better (or more beautiful). Visit a store to get started on your next project today. 888.398.6595 or tileshop.com/mod

WINDOW TREATMENTS

DESIGNER DRAPERIES OF BOSTON

For over 30 years, this trade workroom has been providing high quality custom soft furnishings to the design community. Under new ownership since 2014, we have expanded our services to meet the demands of the automated world. We pride ourselves in the collaborative process, and from measure to install, only our customer service exceeds the quality of our finished products. Located less than one mile from the Boston Design Center, we are easily accessible for consultations to assist in transforming spaces both functionally and aesthetically. *516 E 2nd St. or www.designerdraperiesofboston.com*

HUNTER DOUGLAS

Well-designed window fashions do more than simply cover a window. At Hunter Douglas, form and function are inseparable. Great design is beautiful to live with, provides variable light control, insulates rooms against heat and cold while saving energy, protects your furnishings from damaging UV rays, and even absorbs sound, improving the acoustics in a room. And, their advanced operating systems make using their products a pleasure every day. Now that's artful window dressing. Lifetime guarantee. www.hunterdouglas.com

PROMOTION

MODERN LUXURY

Interiors

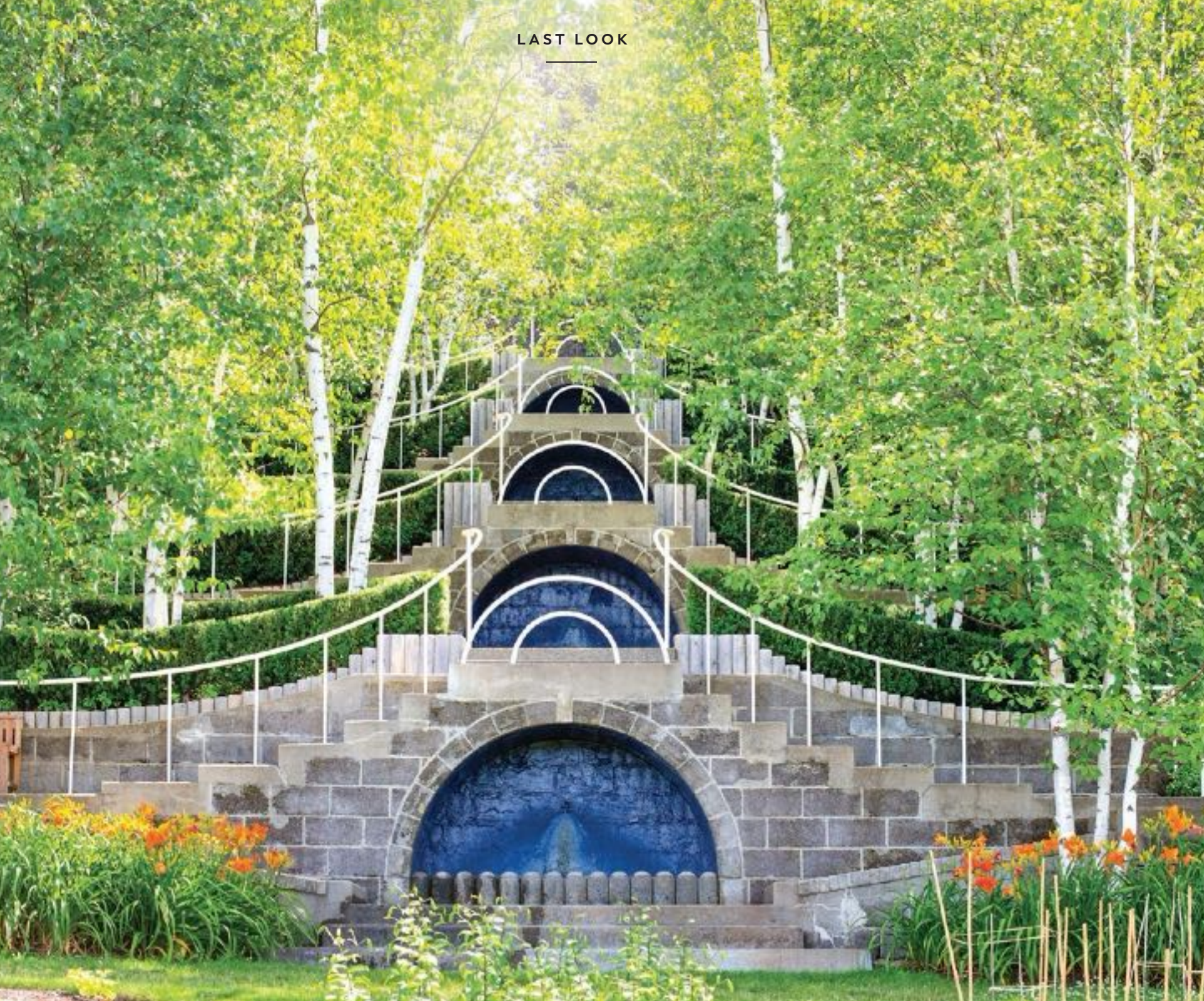


WELCOME
HOME

MODERNLUXURYINTERIORS.COM

Introducing a new digital destination with coast-to-coast design expertise from the editors of *Modern Luxury*

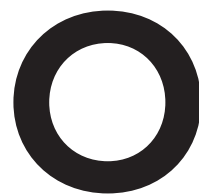
PHOTOGRAPHY BY: PATRICK HEAGNEY



TRUE BLUE

On the grounds of the Gilded Age estate of the Choate family, the iconic Blue Steps are a tribute to another era.

By Jaci Conry



On a hillside overlooking the Berkshire Mountains in Stockbridge, Mass., in 1885, the Choate family established their summer haven. Known as Naumkeag (thetrustees.org), the splendid Shingle Style manse designed by Stanford White sprawled on 48 acres. Mabel Choate took ownership of the estate in 1926. After meeting renowned avant-garde landscape architect Fletcher Steele, she invited him to Naumkeag. A fast friendship between the two was formed, and they embarked on the adventure of transforming the estate's landscape over the next three decades. Together, they designed more than a dozen luminous gardens on the property including the walled Afternoon Garden—defined by Venetian gondola poles—and the Chinese Temple Garden, which was devoted entirely to Asian statuary. The most famous of Choate and Steele's Naumkeag collaborations was the Blue Steps. Initially intended to be a simple stairway leading to Choate's cutting garden, Steele created a set of elaborate concrete steps that were far from simple. Initially, the pair had the steps painted red, orange and yellow, yet they were unhappy with the range of hues and ultimately settled on the vivid shade of blue that has been maintained to this day.

adamsbeasley.com

978.254.5641

Full Service Remodeling

Construction Planning

Custom Millwork

Estate Care

The team of

INTERIOR DESIGN BY
LEWIS INTERIORS

At Adams + Beasley, there is a wonderful energy to all of our interactions, an easy back-and-forth that makes everyone feel at home. Behind that energy is tenacious attention to every detail, from budget management and schedule tracking, to framing standards and fine wood finishing. And just as we customize each project, we nurture each relationship. Our team is grounded in a purposeful connection to the individuals we serve, which results in a deep and ongoing appreciation of the **client experience.**



**ADAMS + BEASLEY
ASSOCIATES**
CUSTOM BUILDERS

Let them know you've arrived.



GLOBAL
LUXURY®

COLDWELLBANKERLUXURY.COM

COLDWELL BANKER RESIDENTIAL BROKERAGE

©2019 Coldwell Banker Residential Brokerage. All Rights Reserved. Coldwell Banker Residential Brokerage fully supports the principles of the Fair Housing Act and the Equal Opportunity Act. Owned by a subsidiary of NRT LLC. Coldwell Banker, the Coldwell Banker Logo, Coldwell Banker Global Luxury and the Coldwell Banker Global Luxury logo are registered service marks owned by Coldwell Banker Real Estate LLC. 🏠 19J4N2_NE_7/19