

ONE KINGS LANE

Spring 2023



SPRING 2023

LIVE *your* STYLE

Spring is a season of renewal, and we take that as a cue to refresh and renew our home. Throughout the following pages, you can see how spring inspired us. Our new designs—furniture integrating wood and cane, rugs handwoven of jute and wool, stone accessories, silk pillows—bring nature's beauty into your home. Colors range from the soothing tones of earth and sand to the sunny rainbow of a garden in bloom. Richly figured burl wood, gesso textures, and glints of gold and brass add organic and artisanal sophistication to a space when layered in fresh ways among classic furnishings.

You'll find plenty of rooms here to inspire you, along with new, vintage, and exclusive furniture, lighting, mirrors, art, and more. So spring ahead and create a home you'll love, this season and for seasons to come.



JUNGLE MURAL WALLPAPER (One Kings Lane exclusive), \$635. TRAVELERS PALM ARTIFICIAL TREE, \$390. EDDARD CONSOLE, \$1,395. Campania International, SET OF 5 ELIA PLANTERS, \$1,395. De-cor, MEGARA GREEK TERRACOTTA VESSEL (vintage), \$745. De-cor, FIONEE LARGE INDIAN MANDALA MARBLE BOWL (vintage), \$669. Cyan, DIANA VASE, \$445. Ralph Lauren Home, PONDEROSA RUG, BIRCH, available in 4 colors and 5 sizes, starting at \$165. FRONT COVER One Kings Lane Collection, MARIEMONT FRAMED ARTWORK, \$345. Munn Works, JEAN ARP PAROLES PEINTES II 1965 FRAMED ARTWORK, \$455. TUFA WALL MIRROR, \$425. FIGURE SKETCH I FRAMED ARTWORK (One Kings Lane exclusive), \$295. EVA MARBLE SIDE TABLE, \$385. Pom Pom at Home, MONTAUK LINEN THROW, NATURAL, available in 3 colors, \$245. See page 27 for the sofa, art, and pillow.

The Curated *home*

Simplicity is the story of your home. Here, an artful selection of handmade pieces, featuring neutral hues and organic textures, find themselves alongside golden glints and natural art.



Kim Salmela Brooklyn Accent Chair (One Kings Lane exclusive). Handcrafted in Los Angeles. For more Kim Salmela, see page 16.

One Kings Lane Collection Delano Performance Linen Sofa in Almond, 9'. Made in Los Angeles.

One Kings Lane Collection, DELANO PERFORMANCE LINEN SOFA, ALMOND, available in 10 colors and 3 sizes, starting at \$2,795 (ottoman and chair also available). Kim Salmela, BROOKLYN ACCENT CHAIR (One Kings Lane exclusive), \$2,295. SET OF 2 RACHEL NESTING TABLES, \$585. Lauren Liess, MODERN MING COCKTAIL TABLE, LIMEWASH, available in 3 finishes, \$2,995. CHESTER GARDEN STOOL, \$160. Dash & Albert, DUNES JUTE WOVEN RUG, available in 6 sizes, starting at \$100. WOVEN JUTE RUG, available in 6 sizes, starting at \$95. Jill Krasner, LAYERING GEOLOGY FRAMED ARTWORK, \$1,240.

AERIN for Visual Comfort Signature Collection, MONTREUIL FLOOR LAMP, GILD, also available in Burnished Silver Leaf, \$1,159. Paloma Contreras for Visual Comfort Signature Collection, COMTESSE MEDIUM GLOBAL TABLE LAMP, \$1,659. SELENA CANE SIDEBBOARD, available in 3 finishes and frame options, \$1,995 (full Selena Cane Collection available at onekingslane.com). See page 9 for pillows.

Form & Function

Meet our favorite core collections, available in a number of pieces for your home. Embrace clean lines and thoughtful touches, all with the ideal place to keep your must-haves.



THE SELENA COLLECTION

SELENA CANE SIDEBOARD, BROWN WASH, available in 3 finishes and frame options, \$1,995. Habibi Imports, GOLD MEDALLION BOUJAD RUG (vintage), \$5,499. Regina Andrew, SANYA VASE, available in 2 sizes, starting at \$300. ALEX FLOOR VASE, \$155. De-cor, AFRICAN BURR WOOD PRIMITIVE BOWL (vintage), \$395.



THE KOS COLLECTION



THE ROLAND COLLECTION

One Kings Lane Collection, KOS 6-DRAWER RAFFIA DRESSER, NATURAL, available in 4 finishes, \$2,195. Ethnicraft, The Nordic Collection: 4-DOOR SIDEBOARD, \$3,795. CONSOLE, \$1,450. NIGHTSTAND, \$700. The Roland Collection: 7-DRAWER DRESSER, \$1,995. 5-DRAWER DRESSER, \$1,295. END TABLE, \$595. AIMEE CANE SIDEBOARD, NATURAL MANGO, also available in Ebony, \$2,195.



THE NORDIC COLLECTION



THE AIMEE COLLECTION

Natural Order

Stone sculptures and graphic art give a contemporary feel to clean, airy surroundings.



STYLING TIPS

- Add in plants, real or faux, to play up the organic element.
- When styling a table or shelf, try to include an odd number of objects.
- Mix rather than match materials: Complement wood with metal, stoneware with raffia.

A Dawn Wolfe, KUBA PATTERN ON CREAM LINEN FRAMED ARTWORK (One Kings Lane exclusive), available in 2 sizes, starting at \$800. **B** Carrier & Company, CENTERED I FRAMED ARTWORK, \$700. **C** Arteriors, ISAAC SCULPTURE, \$470. **D** AMBER VASE, \$250. **E** Knud Nielsen Company, SET OF 6 DRIED MOUNTAIN LAUREL BRANCHES, \$45. **F** Booth & Williams, SET OF 4 MODERN ONYX & SILVER COLORSTAK BOOKS, \$89. **G** SET OF 2 WILMA DECORATIVE BALLS, \$75.



Pillows made of silk velvet and hand-spun cotton bring organic elegance you can feel as well as see.

Orientalist Home, SOPHIE LUMBAR PILLOW, \$215. Tammy Price for One Kings Lane Collection, OASIS PILLOW, \$415. Orientalist Home, MARA LUMBAR PILLOW, \$215. Bolé Road Textiles, KOMBOLCHA, TAN, available in 3 colors, \$265. Amber Lewis x Loloj, CARMEL PILLOW, \$110.

— Now On View —

Discover artists and photographers worth a closer look as well as works you won't find anywhere else in our Now on View curation. We're always finding new art worth sharing, so visit online and curate a collection of your own.



OLIVIA SONG CURATION

“ These artworks could be sourced from an established art gallery or be treasured flea market scores. More importantly, the works can settle comfortably in any contemporary or traditional setting. ”

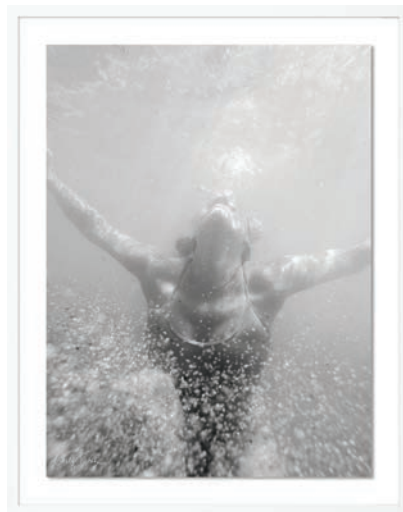
— OLIVIA SONG



CARRIER & COMPANY CURATION



LAUREN LIESS CURATION



CARLY TABAK

“ Photography awakens my creativity and has opened my eyes to the beauty of the world around me. The real joy for me as an artist is sharing my perspective on that beauty with people through my photos. ”

— CARLY TABAK

Olivia Song Curation, **SERGE LE STRAT** (One Kings Lane exclusive), \$885. Olivia Song Curation, **VISTA VIEW** (One Kings Lane exclusive), \$1,105. Carrier & Company Curation, **SLEEP**, \$250. Lauren Liess Curation, **IN THE REEDS** (One Kings Lane exclusive), \$1,495. Carly Tabak, **EXHALE HAWAII** (One Kings Lane exclusive), available in 3 frame colors and 5 sizes, starting at \$420. **AT RIGHT** Thom Filicia, **SET OF 6 BATHOLITH MONOPRINT SERIES 1**, \$2,845. F.J. Kashanian, **PERSIAN RUG**, \$1,299 (vintage). **IRON SMALL BENCH**, \$1,345. Mike Seratt of the Prized Pig, **PRIMITIVE HANDMADE ELM FARMHOUSE STOOL** (vintage), \$349.





DASH & ALBERT

MARK D. SIKES

STARK STUDIO

HABIBI IMPORTS

RALPH LAUREN HOME

Well Grounded

Rugs of jute, cotton, and other natural fibers are a first step to rich texture in your space. A bonus tip: Try them layered too.

Dash & Albert, **DIAMOND SISAL WOVEN RUG, SAND**, available in 3 colors and 4 sizes, starting at \$100. Habibi Imports, **GOLD MEDALLION BOUJAD RUG**, \$5,499 (vintage). Stark Studio Rugs, **ANDERS HAND-KNOTTED RUG, ALPINE**, also available in Maze and 4 sizes, starting at \$3,810. **GANYMEDE RUG**, available in 4 sizes, starting at \$115. Ralph Lauren Home, **PONDEROSA RUG, BIRCH**, available in 4 colors and 5 sizes, starting at \$165. Mark D. Sikes, **HARWICH HANDWOVEN RUG**, available in 3 sizes, starting at \$190.

AT RIGHT, FROM TOP Dash & Albert, **KALI JUTE RUG**, available in 8 sizes, starting at \$110. Dash & Albert, **LOKI JUTE WOVEN RUG**, available in 6 sizes, starting at \$110. Exquisite Rugs, **CAPRICE HAND-TUFTED RUG, AQUA**, available in 3 colors and 6 sizes, starting at \$650.

From hand-knotted antiques to the latest indoor/outdoor styles, oversize designs to runners, One Kings Lane has thousands of rugs to choose from.



NATURAL *Beauty*

Subtle hues come to life with lush textures inspired by natural materials. Add a modern touch with oversized graphic art and lighting.



We love **Matouk** bedding because it's sumptuously soft and sustainably made—and because **Matouk** is a family-owned, USA-based business.



THE WILLA CANE BED



THE SIENA BOUCLÉ PLATFORM BED



THE LATROBE CANOPY BED

AIMEE CANE WINGBACK BED, NATURAL, also available in Black and available in 2 sizes, starting at \$2,495. Kim Salmela, HAZEL VELVET WATERFALL BENCH, OCHRE, available in 3 colors, \$895. Crystorama, SILAS 6-LIGHT CHANDELIER, also available in 3-light, \$1,800. BRAXTON SIDEBOARD, \$1,995. LION ACCENT CHAIR, \$1,195. Stark Studio Rugs, ANDERS HAND-KNOTTED RUG, ALPINE, also available in Maze and 4 sizes, starting at \$3,810. Thom Filicia by Eastern Accents, TRILLIUM MOHAIR LONG LUMBAR PILLOW, \$345. Thom Filicia by Eastern Accents, CUSTER LINEN EURO SHAM, \$175. Kim Salmela, NOLAN BOUCLÉ PILLOW, SAGE/WHEAT, available in 8 colors, \$165. Matouk, AUGUSTA COVERLET, Available in 2 sizes, starting at \$455.

The Matouk Schumacher Collection, PRADO SHAM, starting at \$115, PILLOWCASE SET, starting at \$225, FLAT SHEET, starting at \$425, and DUVET COVER, starting at \$1,100 (available in multiple colors and sizes). Dawn Wolfe, KUBA PATTERN ON CREAM LINEN FRAMED ARTWORK (One Kings Lane exclusive), available in 2 sizes, starting at \$800. Carrier & Company, HELGA I, \$350. Laura Roebuck, TREE MOSS II (One Kings Lane exclusive), available in 4 sizes, starting at \$395. WILLA CANE BED, available in 2 sizes, starting at \$1,875 (dresser and nightstand also available). SIENA BOUCLÉ PLATFORM BED, SNOW, available in 3 fabrics, 3 colors, and 5 sizes, starting at \$1,750. Community, LATROBE CANOPY BED (One Kings Lane exclusive), available in 3 sizes, starting at \$3,495.

DESIGN SPOTLIGHT | SMALL MAKERS

Great things can come from small makers: That's why we collaborate with smaller independent brands like Kim Salmela and Community.

KIM SALMELA



LAGUNA CRYPTON SOFA



LOWELL LINEN CHAIR

“

I want to create pieces that allow people to have stylish homes but not at the cost of livability.

— KIM SALMELA

All, One Kings Lane exclusives, from left: LAGUNA CRYPTON SOFA, WHITE, available in 3 colors and in linen, \$4,150. LOWELL LINEN CHAIR, BLUSH, available in velvet, Crypton, and multiple colors, \$2,195. LAGUNA CRYPTON SECTIONAL, WHITE, available in 4 Crypton and linen colors, \$6,495 (available in left and right sectional).

what's your **STYLE?**

Whatever it is—formal or family-friendly, traditional or of the moment—you'll find the perfect seating for your taste, your space, and your lifestyle. Request a swatch at interiordesign@onekingslane.com.



THE BRYN SOFA

Deep enough (and comfy enough) to double as a bed



THE PARKER SOFA



Place it under a window, at the end of a bed, by a fireplace... So versatile!

THE TARIFA DAYBED



THE PORTSMOUTH SOFA

Both on-trend and timeless —and stain-resistant too



THE SUTTON SOFA

Our tribute to the so-chic French mattress sofa



THE LANE SOFA



THE BURKE SOFA



THE STANTON SOFA

COMMUNITY

Community's trained artisans use techniques handed down to them from previous generations to build beautiful, transitional furniture you can live in.



REILLY SLIPCOVER SOFA

“

Simple is sophisticated. Made in LA.

— JASON CHAUNCEY, OWNER



VANDER BENCH

All, One Kings Lane exclusives, from left: CLIO LINEN TÊTE-À-TÊTE, \$6,295. VANDER BENCH, WHITE CRYPTON, available in 3 colors, \$3,695. REILLY SLIPCOVER SOFA, LIGHT GRAY LINEN, also available in Ivory, \$4,095.

Nikki Chu for One Kings Lane, BRYN 3-PIECE SOFA, DURBAN NATURAL, available in additional fabrics, \$2,895. John Robshaw for Cloth & Company, TARIFA DAYBED, MADURA VISTA, available in 6 prints and 4 solids, \$1,095. One Kings Lane Collection, PARKER PERFORMANCE VELVET SOFA, QUARTZ, available in 10 colors and 3 sizes, starting at \$2,995 (sectional, chair, and ottoman also available). One Kings Lane Collection, PORTSMOUTH SOFA, CREAM LINEN, also available in 2 velvet colors, \$7,195 (chair and ottoman also available). One Kings Lane Collection, SUTTON VELVET SOFA, GRAPHITE, available in 4 colors, \$4,695 (chair, ottoman, and sectional also available). Kim Salmela, BURKE PERFORMANCE SOFA, (One Kings Lane exclusive), \$6,295. One Kings Lane Collection, LANE CRYPTON TUFTED SOFA, \$2,545. One Kings Lane Collection, STANTON PERFORMANCE VELVET SOFA, CAMEL, available in 10 colors and 3 sizes, starting at \$2,495 (sectional, chair, and ottoman also available).

MIRANDA KERR HOME

In her latest collection for Universal Furniture, model-turned-designer Miranda Kerr pairs Parisian elegance with family-friendly ease (including stain-resistant fabrics). The result: a glamorous serenity.



“
Tranquility is reflective of today’s need for reassurance.
It’s the idea that a home should be an inviting place of
solace and respite, a warm and welcoming space.

— MIRANDA KERR



ARC CONSOLE TABLE, \$1,960. FLEUR 2-DOOR HALL CHEST, \$2,025. CHANNELED LEATHER ACCENT CHAIR, \$2,745. MOREL ARMCHAIR, \$855. TRUFFLE 60" ROUND DINING TABLE, \$2,425. MANTRA SIDEBORD, \$3,030. GALLETT ACCENT MIRROR, available in 2 sizes, starting at \$530. RIVIERA BUNCHING BENCH, \$720. RESTORE UPHOLSTERED BED, available in 2 sizes, starting at \$2,960. PARIS 2-DRAWER NIGHTSTAND, \$1,690.

TREND SPOTLIGHT

MATERIAL *Mix*

Lavishly figured burl wood and richly textured plaster are having a moment. Each is beautiful on its own, and the height of sophistication when together in a room.



Ave Home, CHLOÉ COFFEE TABLE, \$2,695. Gabby, SCARLETT RESIN WALL MIRROR, \$740. AERIN for Visual Comfort Signature Collection, BENIT MEDIUM PENDANT, PLASTER WHITE, available in 3 finishes, \$1,379. Gabby, CARLIN SIDE TABLE, \$740. Cyan, 14" DIANA VASE, \$445. Dawn Wolfe, WIND 2 FRAMED ARTWORK, \$1,000 (One Kings Lane exclusive). VINTAGE BUST (for more vintage, visit onekingslane.com). Stark Studio Rugs, ANDERS HAND-KNOTTED RUG, ALPINE, also available in Maze and 4 sizes, starting at \$3,810.



TEAGAN CABINET, \$4,495. Christopher Spitzmiller for Visual Comfort Signature Collection, BUATTA LARGE TABLE LAMP, BLUE SPLATTER, available in 2 colors, \$1,379.

“
Past meets present
with the classic
in common.”

A Visual Comfort Signature Collection, CYNARA CHANDELIER, PLASTER WHITE, available in 3 finishes and 2 sizes, starting at \$2,309. B Bunny Williams Home, ORWELL WALL MIRROR, \$2,200. C Arteriors, FINN SCULPTURE, \$260. D Currey & Company, GALLO DRINKS TABLE, \$545. E Fleur de Lex Antiques, TALL 7-DRAWER BURLWOOD LINGERIE CHEST, \$1,275 (vintage). F Jamie Young, AEGEAN PEDESTAL BOWL, available in 2 sizes, starting at \$140. G Julie Neill for Visual Comfort Signature Collection, ALBERTO SMALL SCONCE, PLASTER WHITE, available in 4 finishes, \$439. H MONTCLAIR DEMILUNE CONSOLE, \$1,995. I Regina Andrew, SANYA ROUND WALL MIRROR, \$900. J Lauren Liess, SCROLL CONSOLE TABLE, \$2,645.



The
CLASSICS

The Margot Sofa remains one of our (and your) favorite pieces: It's both classic and contemporary, luxe and designed for everyday living—like the rest of this room.

New from Paloma Contreras for Visual Comfort, Orsay Medium Floor Lamp.

Margot Sofa in Moss Green. Available in 3 colors and 2 sizes.

MARGOT VELVET SOFA, MOSS GREEN, available in 3 colors and 2 sizes, starting at \$4,195 (chair and ottoman also available). Ave Home, CHLOÉ COFFEE TABLE, \$2,695. HILLARY ROUND CAST GLASS SIDE TABLE, \$395. Dash & Albert, DIAMOND SISAL WOVEN RUG, SAND, available in 3 colors and 6 sizes, starting at \$100. Olivia Song Curation, VAULTED CEILING FRAMED ARTWORK (One Kings Lane exclusive), \$555.

Paloma Contreras for Visual Comfort Signature Collection, ORSAY MEDIUM FLOOR LAMP, \$1,350. NDI, WHITE PEONY ARRANGEMENT, \$475. Vermillion Designs, MARBLE STONE VIBE POCHE, \$499 (vintage). MONTELL DECORATIVE BOX, \$65. One Kings Lane Collection: MASON MANTEL WALL MIRROR, \$595 (standard wall mirror and floor mirror also available). ADA LONG LUMBAR PILLOW, OYSTER VELVET and WHITE LINEN, available in more than 30 color options and 2 sizes, starting at \$150. ALFIE LUMBAR PILLOW, \$285.

On REFLECTION

New Styles. New Finishes. Available Only Here.

All, One Kings Lane Collection: MASON MANTEL WALL MIRROR, \$595. JULIETTE FLOOR MIRROR, ANTIQUE BRASS, \$895. MASON WALL MIRROR, NATURAL, \$595. MASON WALL MIRROR, SILVER LEAF, \$495. MASON FLOOR MIRROR, NATURAL, \$1,095. DUCHESS WALL MIRROR, ANTIQUE GOLD, \$595. JULIETTE WALL MIRROR, ANTIQUE BRASS, \$495.

Inspired by a love of Parisian style and vintage finds, we designed these new mirror styles (available in multiple sizes and finishes) to complement the way you live today.



One Kings Lane Collection, MASON MANTEL WALL MIRROR, \$595. Iittala, TOIKKA BLUE BIRD, \$290. Juliska, FLORENCE VASE, \$650. F.J. Kashanian, PERSIAN RUG, \$1,299 (vintage). NOREEN ACCENT CHAIR, HONEY/OFF-WHITE LINEN, available in 3 finishes, \$1,140.

A Layered Retreat

Time-honored finds, soft hues, and light linens breathe new life into furnishings.



Breathable, durable, and naturally hypoallergenic, linen brings practical elegance to a bedroom. And it gets only softer with age!



Whether it's the ideal light for reading in bed or art you love waking up to, finishing touches make your home a haven.



ALLAIRE OAK CANOPY BED, available in 2 sizes, starting at \$2,095. Lavender Oriental Carpets, ELEPHANT FOOT AFGHAN RUG, \$6,495 (vintage). Ralph Lauren Home, PONDEROSA RUG, BIRCH, available in 4 colors and 5 sizes, starting at \$165. Pom Pom at Home, LINEN LOGAN DUVET COVER, TERRACOTTA, available in 3 colors and 3 sizes, starting at \$485. Pom Pom at Home, LINEN LOGAN SHAM, TERRACOTTA, also available in Olive and in 2 sizes, starting at \$115. Pom Pom at Home, BIANCA LUMBAR PILLOW in BLUSH VELVET, available in 3 colors and 2 sizes, starting at \$210. Sijo, FRENCH LINEN SHEET SET, FOG, available in 4 colors and 3 sizes, starting at \$285. One Kings Lane Collection, PENELOPE WALL SCONCE, BRASS, available in 3 finishes, \$375 (task lamp and floor lamp also available).

One Kings Lane Collection, DUCHESS WALL MIRROR, \$595 (floor mirror also available). Ave Home, LOUIE DRESSER/NIGHTSTAND, \$2,795. One Kings Lane Collection, ROMY PERFORMANCE LINEN SOFA, SNOW, available in 10 colors and 3 sizes, starting at \$2,495 (chair also available). Lillian August, MIDDLE GROUND 2 TRIPTYCH, \$3,995. Pom Pom at Home, BIANCA LUMBAR PILLOW, SAGE VELVET, available in 3 colors, \$210. One Kings Lane Collection, EMMA BALL PILLOW, DUNE LINEN, also available in velvet and over 30 colors, \$170. Visual Comfort Signature Collection, ASHER FLOOR LAMP, \$750.



“
I've always considered
lighting to be the ultimate
accessory for the home.
— AERIN LAUDER

FIND *your* LIGHT

From pendants to floor lamps, our assortment has something to suit every space, from designers like Aerin Lauder, Christopher Spitzmiller, Paloma Contreras, and Kelly Wearstler.

FROM LEFT: Paloma Contreras for Visual Comfort Signature Collection: **COMTESSE MEDIUM GLOBE TABLE LAMP**, \$1,659. **ORSAY MEDIUM FLOOR LAMP**, \$1,350. One Kings Lane for Visual Comfort, **BYRANT TABLE LAMP**, \$695. AERIN for Visual Comfort Signature Collection, **BENIT MEDIUM PENDANT**, PLASTER WHITE, available in 3 finishes, \$1,379. One Kings Lane for Visual Comfort, **THEO DOME FLOOR LAMP**, BRASS/WHITE, available in 3 finishes, \$765 (pendant and sconce also available). Christopher Spitzmiller for Visual Comfort Signature Collection, **BUATTA LARGE TABLE LAMP**, BLUE SPLATTER, also available in Gold Splatter, \$1,379. AERIN for Visual Comfort Signature Collection, **MONTREUIL FLOOR LAMP**, GILD, also available in Burnished Silver Leaf, \$1,159.

BRASS



STONE

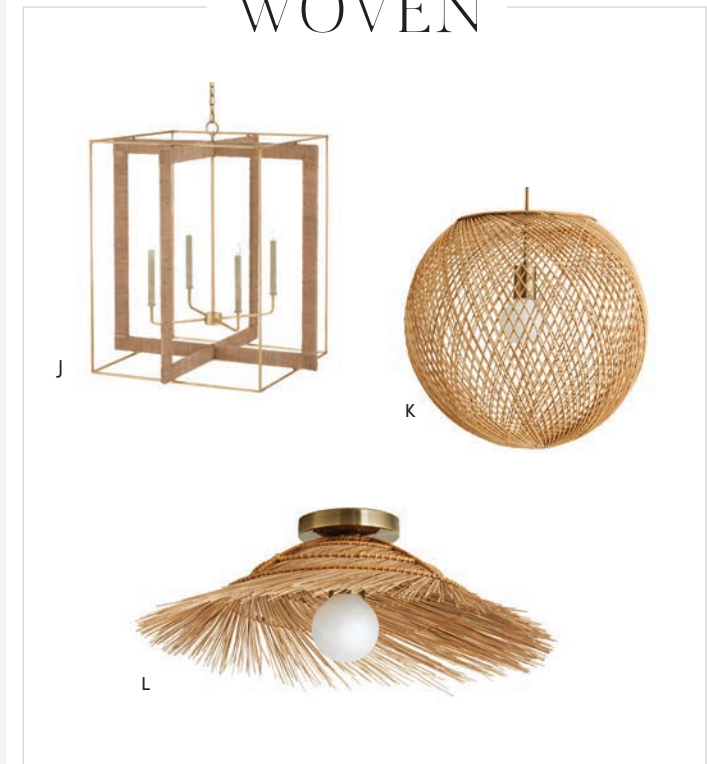


PLASTER



“
Plaster is the perfect
material for creating the
naturalistic forms.
— JULIE NEILL

WOVEN



A One Kings Lane for Visual Comfort, **THEO DOME PENDANT**, BRASS, available in 3 finishes, \$695 (floor lamp and sconce also available). One Kings Lane Collection: B **PENELOPE TASK LAMP**, BRASS, available in 3 finishes, \$395 (floor lamp and sconce also available). C **SOLANA FLUSH MOUNT**, BRASS, available in 3 finishes, \$695 (pendant also available). D One Kings Lane for Visual Comfort, **JANE PETAL TABLE LAMP**, PLASTER WHITE, available in 3 finishes, \$575. E Julie Neill for Visual Comfort, **MANDEVILLE SCONCE**, \$579. F Crystorama, **BROCHE 8-LIGHT CHANDELIER**, MATTE WHITE, available in 3 finishes, \$1,400 (additional styles and sizes available). G **JOELLE MINI ACCENT LAMP**, \$315. H Regina Andrew, **HOUSTON SCONCE**, \$400. I C the Light Interiors, **MARBLED MUSHROOM LAMPS**, PAIR, \$1,199 (vintage). J Currey & Company, **PUREBRED LARGE ROPE LANTERN**, \$2,945. Arteriors: K **INDIANA RATTAN PENDANT**, \$730. L **HAYES SCONCE/FLUSH MOUNT**, \$560 (can be hung as a sconce or a flush mount).

The GOOD *Life*

Embrace the warm breezes of Palm Beach style with soft pastels and woven textures. It's the perfect harmony of indoor and outdoor living.

Emilia Raffia Lounge Chair in White. Shown outdoors on pages 38-39.

One Kings Lane Collection Isadora Performance Linen Sofa in Snow, 8'. Available in 10 colors and 3 sizes. Outdoor slipcover version shown on pages 38-39.

One Kings Lane Collection, ISADORA PERFORMANCE LINEN SOFA, SNOW, available in 10 colors and 3 sizes, starting at \$2,695 (sectional, ottoman, chair, and outdoor sofa also available). BRIANNE SQUARE COFFEE TABLE, \$3,995. One Kings Lane Collection, EMILIA RAFFIA LOUNGE CHAIR, WHITE, also available in Ebony and multiple fabric options, starting at \$1,995. Mark D. Sikes, HARWICH HANDWOVEN RUG, available in 3 sizes, starting at \$190. SCATTER RATTAN OTTOMAN, available in 2 sizes, starting at \$795. Bradburn Home, SAINT LUCIA COUTURE TABLE LAMP, \$845. Dawn Wolfe, RETRO BLUE OVALS DIPTYCH (One Kings Lane exclusive), available in 3 colors and 3 sizes, starting at \$900. De-cor, ANGLO INDIAN BLEACHED INLAY ARMCHAIR, \$2,215 (vintage). John Robshaw for Cloth & Company, ESRA OTTOMAN, MADURA VISTA, available in 7 prints and 4 solid colors, \$495.

Kelly Wearstler for Visual Comfort Studio Collection, VENETO TABLE LAMP, DUSTY ROSE, available in 3 colors and 2 sizes, starting at \$280. Ralph Lauren Home for Visual Comfort Signature Collection, ANETTE FLOOR LAMP, NATURAL BRASS, also available in Polished Nickel, \$1,049. KIKO BLOCK PILLOW, available in 3 sizes, starting at \$90. Dana Gibson, CLIVEDERN PILLOW, GREEN, also available in Blue, \$245. Pine Cone Hill, SANTA MONICA PILLOW, \$95. ELLIOT FLORAL PILLOW, SAGE/WHITE, also available in Sky/White, \$115. Piper Collection, LOLA DOTS PILLOW, EMERALD/WHITE, also available in Prussian Blue/White, \$265. Celerie Kimble for Arteriors, SET OF 3 SHELL SCULPTURES, \$430. Booth & Williams, SET OF 4 MODERN MARLIN COLORSTAK BOOKS, \$89. Beth Webb for Arteriors, MONTECITO TRAY, \$820. Bordallo Pinheiro, WATERMELON PITCHER, \$180. EDDARD CONSOLE, \$1,395. David Francis Furniture, CHIPPENDALE ÉTAGÈRE, LIGHT BLUE, also available in Light Gray, \$2,445.

Garden Party

Your invitation has arrived. In a room with such personality—verdant palms, complementary patterns—we can't help but think you'll RSVP yes.



ADEN DINING TABLE, available in 2 sizes, starting at \$995. BRADY ARCHED CABINET, CREAM, also available in Black, \$2,695. One Kings Lane Collection, JULIEN SLIPPER CHAIR, HARBOR BLUE VELVET, available in 4 colors, \$1,945. One Kings Lane Collection, EXETER DINING CHAIR, WHITE/LEMON, available in 9 colors, \$1,595. Ralph Lauren Home, CANYON STRIPE PATCH RUG, SKY, available in 3 colors and 5 sizes, starting at \$135.

BRIELLE 4-DOOR CONSOLE/MEDIA STAND, WHITE/GOLD MESH, available in 3 colors, \$865. Julie Neil for Visual Comfort Signature Collection, ALBERTO 2-TIER CHANDELIER, PLASTER WHITE, available in 3 finishes and multiple sizes, \$2,309. Schorr & Dobinsky, FRENCH 19TH-CENTURY CHATEAU BIRDCAGE, \$2,495 (vintage). Jamie Young, STUDIO TABLE LAMP, LEAF GREEN, available in 4 colors, \$345.

PATTERN

Play

We designed our new Cerifera palm fabric to celebrate effortless elegance—you can easily dress it up or down. Also new: the Miliana Arched Bed, and so much more.



One Kings Lane Collection: MILIANA ARCHED BED, CERIFERA SAGE, also available in Neutral and 4 sizes, starting at \$1,295. CERIFERA PILLOW, SHOWN IN SAGE and BLUE, available in 3 colors and 3 sizes, starting at \$90. One Kings Lane for Visual Comfort, BYRANT TABLE LAMP, \$695. Gabby, CARLIN SIDE TABLE, \$740. Carrier and Company, DOVE FRAMED ARTWORK, \$450. Sijo, FRENCH LINEN BEDDING, SKY, available in 6 colors and multiple sizes, starting at \$70. Ralph Lauren Home, CANYON STRIPE PATCH RUG, SKY, available in 3 colors and 5 sizes, starting at \$135.



One Kings Lane Collection: RAEALYN DAYBED, CERIFERA SAGE, also available in Neutral, \$1,195. STONE HARBOR OUTDOOR PILLOW, CHAMBRAY, available in 3 colors and 2 sizes, starting at \$165. KIKO BLOCK PILLOW, available in 3 sizes, starting at \$90. EMMA BALL PILLOW, DUNE LINEN, available in velvet, linen, and over 30 colors, \$170. CERIFERA PILLOW, BLUE, available in 3 colors and 3 sizes, starting at \$90. Dana Gibson, CLIVEDEN PILLOW, \$245. Piper Collection, LOLA DOTS PILLOW, EMERALD/WHITE, also available in Prussian Blue/White, \$265. Dana Gibson, DOG LUMBAR PILLOW, \$195. ELLIOT FLORAL PILLOW, SAGE/WHITE, also available in Sky/White, \$115. Ralph Lauren Home, PONDEROSA RUG, BIRCH, available in 4 colors and 5 sizes, starting at \$165. Laura Roebuck, TREE MOSS II FRAMED ARTWORK, available in 4 sizes, starting at \$395.

COLLECT Yourself

Sometimes more is more—especially when it comes to building collections of vintage delights sourced by our vetted experts.



BRADY ARCHED CABINET, CREAM, also available in Black, \$2,695. John Robshaw for Cloth & Company, ESRA OTTOMAN, MADURA VISTA, available in 7 prints and 4 solid colors, \$495. Shop vintage tabletop and more at onekingslane.com.



If you've got them—in this case, vintage plates—flaunt them, as @f.potisek does.

COLLECTING TIPS

- Keep your style in mind. More important than an item's value or popularity is that you want to display it with pride.
- Know the dealer. Particularly valuable pieces should come with a certificate of authentication.
- Look for logos, maker's marks, and other symbols.



Another reason to love vintage: It's a chic approach to recycling!



Moroccan rugs, outsider art, California pottery, Georgian furniture: Our ever-changing vintage assortment spans continents and centuries. And it includes designer handbags, jewelry, and accessories too.



An assortment from Black Sheep Antiques.



Here Comes *the* SUN

Part of our long-time collaboration with designer Celerie Kemble and available only here, the Kit dining set gets a dose of whimsy with a fun-loving table setting amid an abundance of lush palms. It's how we prefer to dine on every warm day. Shop the full Kit Collection at One Kings Lane.

Celerie Kimble for One Kings Lane, KIT 7-PIECE DINING SET, BLACK FINISH WITH WHITE CUSHIONS, available in 3 finishes and multiple fabric options, \$6,495 (5-piece dining set also available). JAMES RATTAN BAR CART, \$1,495. One Kings Lane Collection, EMILIA RAFFIA LOUNGE CHAIR, WHITE, also available in Ebony and multiple fabric options, starting at \$1,995. One Kings Lane Collection, ISADORA OUTDOOR SLIPCOVERED SOFA, SNOW LINEN, available in 3 colors and 3 sizes, starting at \$3,995 (chair and ottoman available). NDI, ORCHID IN GLASS VASE, \$635. GIANT CLAM, \$425. Juliska: BILBAO SAGE DINNER PLATE, \$35. BILBAO SAGE SALAD PLATE, \$25. BILBAO SAGE COUPE BOWL, \$35.

The Frances Collection

The wrought-iron designs of Belle Époque Paris inspired our best-selling (and exclusive) Frances outdoor furniture. Crafted of durable powder-coated aluminum, these furnishings will bring French chic to your outdoor spaces for years to come.

Choose Your Favorite

3 chic frame finishes: black, celadon, white



Nearly 2 dozen weather-resistant cushion fabrics



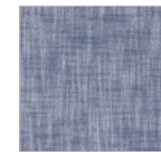
WHITE



BLUSH PINK



BLACK



LINEN INDIGO



LINEN INDIGO STRIPE



BLACK/WHITE CABANA



PISTACHIO CABANA



LEMONS



INDIGO DOLCE FLORAL

Discover scores of new and favorite indoor/outdoor rugs at onekingslane.com.

All, One Kings Lane Collection: FRANCES WHITE LOUNGE CHAIR, BLUSH PINK/WHITE WELT CUSHION, starting at \$1,395. FRANCES WHITE OTTOMAN, WHITE CUSHION, starting at \$595. FRANCES WHITE SOFA, WHITE/BLACK WELT CUSHION, starting at \$3,595. FRANCES COFFEE TABLE, WHITE/ANTIQUE GOLD, \$595. FRANCES SIDE TABLE, WHITE/ANTIQUE GOLD, \$395. AYA FRINGE PATIO UMBRELLA, WHITE, available in 8 colors, \$895. FRANCES SMALL PLANTER, WHITE, also available in Black, \$395. FRANCES OUTDOOR PILLOW, BLUSH DOTS, available in 2 sizes, starting at \$185. EMILIA OUTDOOR PILLOW, WHITE/ALMOND, available in 2 sizes, Starting at \$175. EVIE OUTDOOR PILLOW, TAN/WHITE, available in 3 colors, \$125.

The Great Outdoors

Celadon planters filled with leafy palms create the feel of your own personal oasis right in the backyard.



Celerie Kimble for One Kings Lane, KIT CHIPPENDALE PLANTER, CELADON, available in 3 colors and 2 sizes, starting at \$445.



One Kings Lane Collection, EMILIA PLANTER, EBONY, also available in Raffia and in 2 sizes, starting at \$325.



One Kings Lane Collection: DANI POM-POM PATIO UMBRELLA, BLACK, available in multiple colors, \$725. AYA FRINGE PATIO UMBRELLA, WHITE, available in 22 colors with and without fringe, starting at \$695. PHOEBE SCALLOP PATIO UMBRELLA, WHITE SPOT, available in 20 colors and 2 sizes, starting at \$575.



Our exclusive prints, designed by us for you, are available on chairs, umbrellas, towels, and coolers.

Business & Pleasure for One Kings Lane: FLORA SLING CHAIR, \$249. FLORA PATIO UMBRELLA, \$599. LAUREN'S COOLER TOTE BAG, SAGE STRIPE, also available in Pink Stripe, \$99.



The Emilia Collection

Durable enough (and UV resistant) for outdoors, sophisticated enough for indoors: The handwoven frames of our exclusive Emilia Collection come in two finishes, Ebony and Raffia (as seen on page 30) and multiple fabric options.

One Kings Lane Collection: EMILIA PLANTER, EBONY, available in 2 sizes, starting at \$325. EMILIA EBONY SOFA, WHITE/BLACK WELT CUSHION, starting at \$4,295. EMILIA EBONY DINING CHAIR, WHITE/BLACK WELT CUSHION, starting at \$1,095. EMILIA EBONY CHAISE, WHITE/BLACK WELT CUSHION, starting at \$2,395. FARAH OUTDOOR PILLOW, SAND/WHITE, available in 3 colors and 2 sizes, starting at \$215. PHOEBE FRINGE PATIO UMBRELLA, WHITE/BLACK, available in multiple colors and 2 sizes, starting at \$615. Kim Salmela, QUINN OUTDOOR BENCH/OTTOMAN (One Kings Lane exclusive), \$995.

SEDONA OUTDOOR PILLOW, CHARCOAL, available in 3 colors and 2 sizes, starting at \$225. Celerie Kemble for One Kings Lane: FAYE LUMBAR OUTDOOR PILLOW, WHITE, available in 3 colors, also available in square size, \$185. KALA OUTDOOR PILLOW, WHITE PALM, available in 3 colors, also available in lumbar, \$145. Kim Salmela, LEVI OUTDOOR LUMBAR PILLOW (One Kings Lane exclusive), \$160. Dash & Albert, BIRMINGHAM INDOOR/OUTDOOR RUG, available in 8 sizes, starting at \$70. Global Views, BEAUFORT GINGER JAR, available in 2 sizes, starting at \$75.



The PERSONAL *Touch*

How to create a home you'll love: Choose items that work for you, then curate them in a style distinctly yours. Forget the "rules." Your personal touch is the only one that matters.

Paloma Conteras for Visual Comfort Signature Collection, **ORSAY MEDIUM FLOOR LAMP**, \$1,350. **MACIE 76" RATTAN WATERFALL CONSOLE**, \$2,695. Booth & Williams, **SET OF 3 MODERN FOG COLORSTAK**, available in multiple colors, \$79. **DRAGON LOTUS TEMPLE JAR, GREEN/WHITE**, \$395. **FIGURE SKETCH 1 FRAMED ART** (One Kings Lane exclusive), \$295. Carrier & Company, **DOVE FRAMED ARTWORK**, \$450. Ralph Lauren Home, **PONDEROSA RUG, BIRCH**, available in 4 colors and 5 sizes, starting at \$165. Shop our vintage rug assortment at onekingslane.com.

Live Your Style

Follow us on Instagram @onekingslane and share your own #myOKLstyle



@leeowensdesign and the **KOS RAFFIA CONSOLE**.
Photo: @elizabethhaynesphotography



@intimatelivinginteriors and the **PAULINA DINING CHAIR**.
Photo: @karynmillet



@lizmearns and the **HUGHES SWIVEL CHAIR**



@greystoneonwaverly and the **KELLY WINGBACK BED**



@molly.h.williams and the **MASON WALL MIRROR**



@eandainteriors and the **MORAVIAN STAR LANTERN**

Book a free appointment with One Kings Lane Interior Design. [Learn more](#)



One Kings Lane Collection, EMILIA RAFFIA
LOUNGE CHAIR, WHITE, also available in Ebony
and multiple fabric options, starting at \$1,995.
Mark D. Sikes, HARWICH HANDWOVEN RUG,
available in 3 sizes, starting at \$190.
See page 30 for other products.



Shop now, pay later—finance your purchase
in 3–36 monthly payments



Protect your products, affordably, in the case of
accidental stains and damage with Extend